

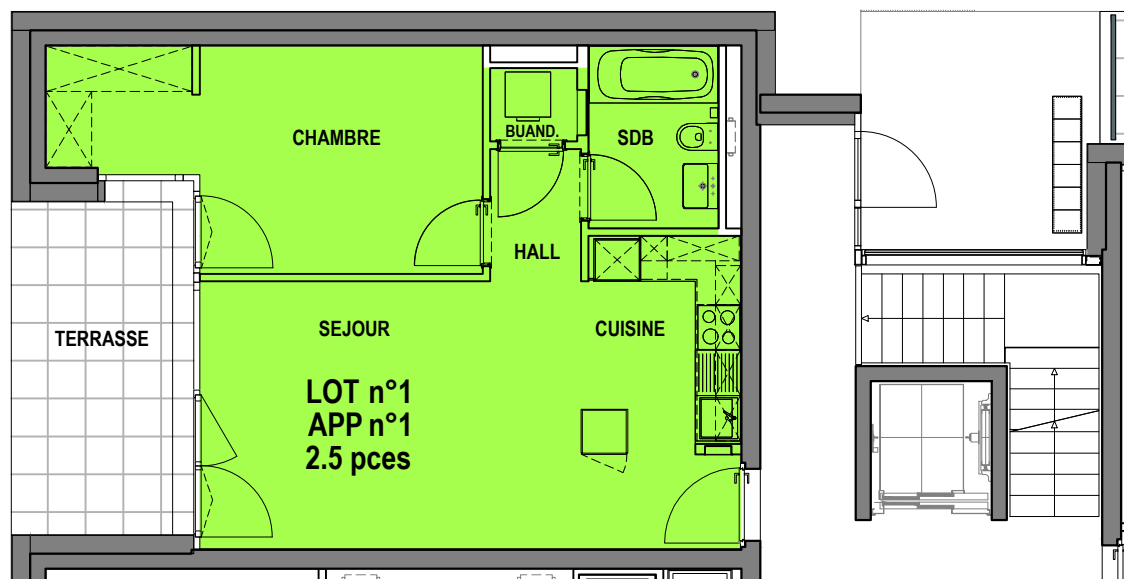
La Clochette
Mont-s/Lausanne
PPE "BATIMENT C1"
LOT n°1
APP n°1

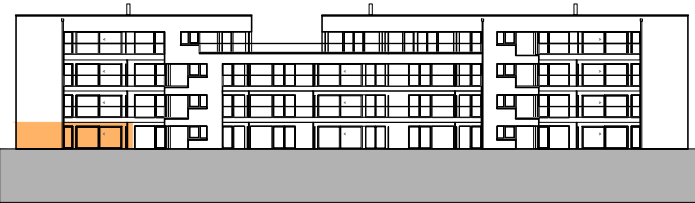
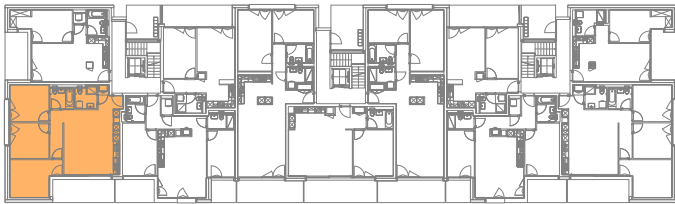
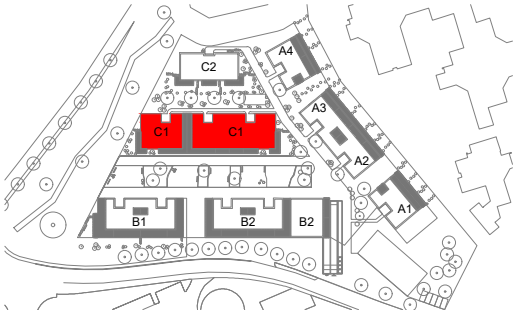
2.5 PIECES

[surface habit.uspi] 49.5 m²
 [surface terrasse] 10.5 m²

CAVE 5.5 m²

REZ-DE-CHAUSSÉE





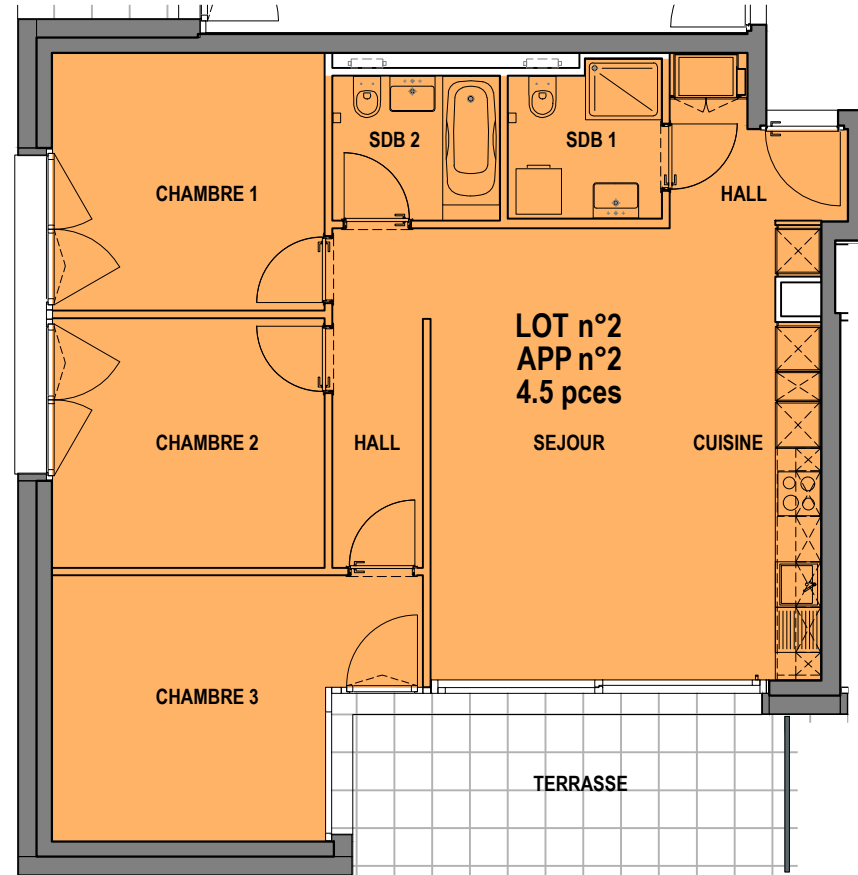
La Clochette
Mont-s/Lausanne
PPE "BATIMENT C1"
LOT n°2
APP n°2

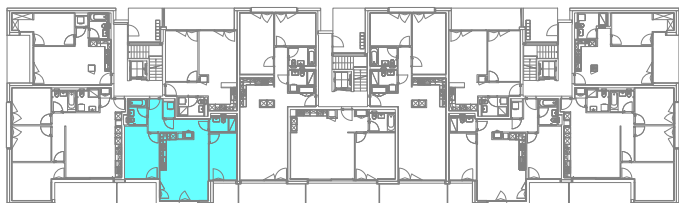
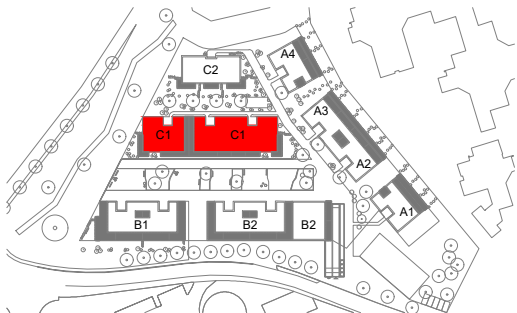
4.5 PIECES

[surface habit.uspi] 90.0 m²
 [surface terrasse] 14.0 m²

CAVE 8.0 m²

REZ-DE-CHAUSSÉE





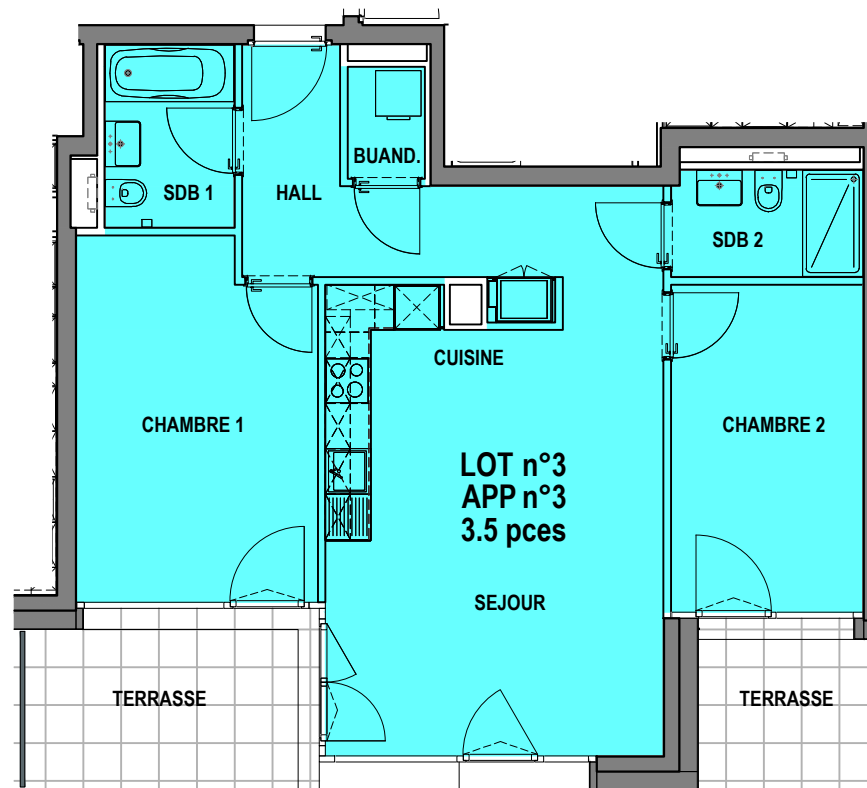
La Clochette
Mont-s/Lausanne
PPE "BATIMENT C1"
LOT n°3
APP n°3

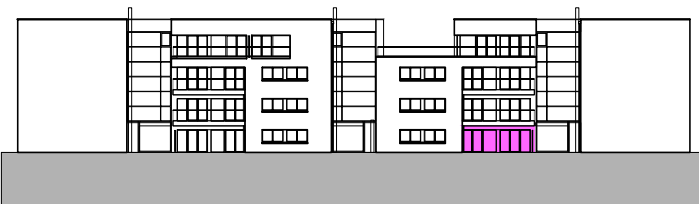
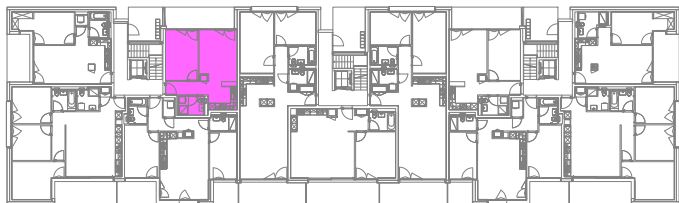
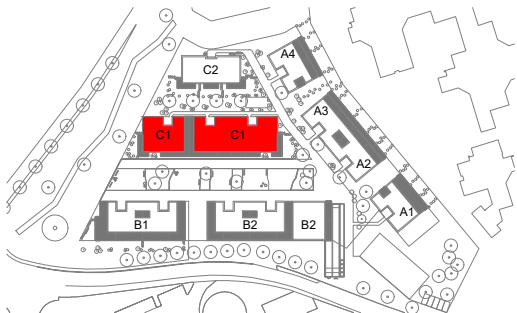
3.5 PIECES

[surface habit.uspi] 74.0 m²
 [surfaces terrasses] 14.0 m²

CAVE 5.5 m²

REZ-DE-CHAUSSÉE





La Clochette
Mont-s/Lausanne
PPE "BATIMENT C1"
LOT n°4
APP n°4

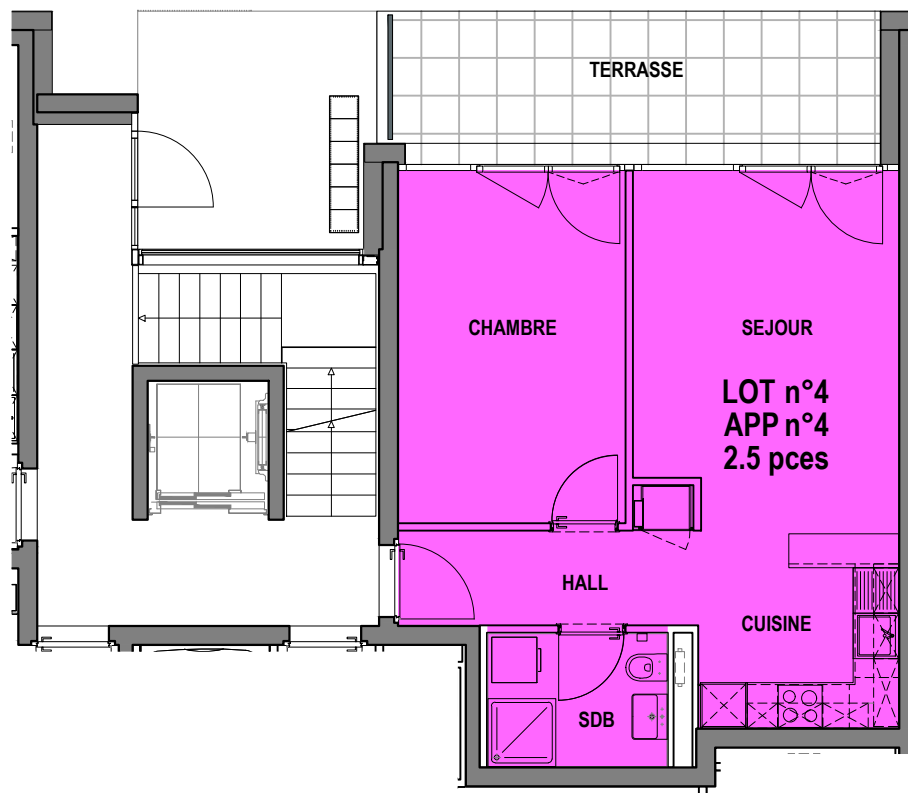
2.5 PIECES

[surface habit.uspi] 47.5 m²
 [surface terrasse] 13.0 m²

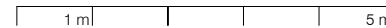
CAVE 5.5 m²

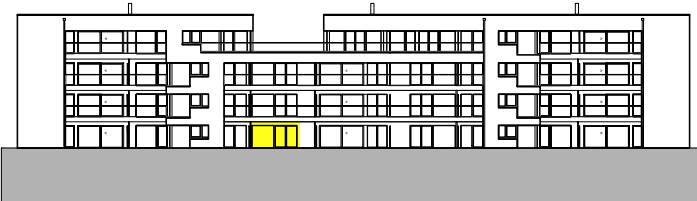
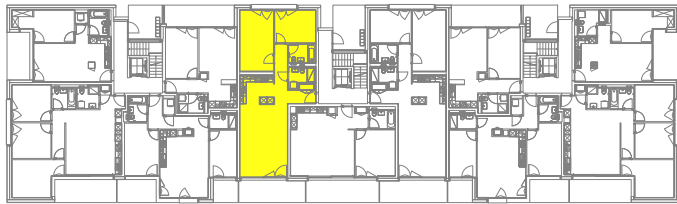
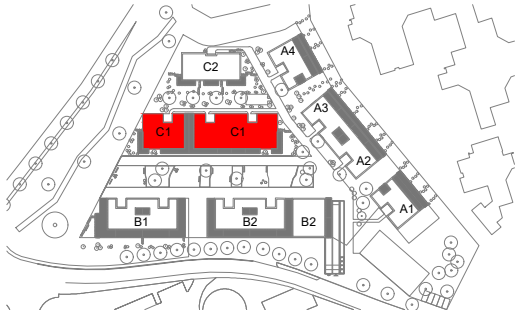
REZ-DE-CHAUSSÉE

20.12.2023
 PEZZOLI & ASSOCIÉS | ARCHITECTES



PLAN 1:100





La Clochette
Mont-s/Lausanne
PPE "BATIMENT C1"
LOT n°5
APP n°5

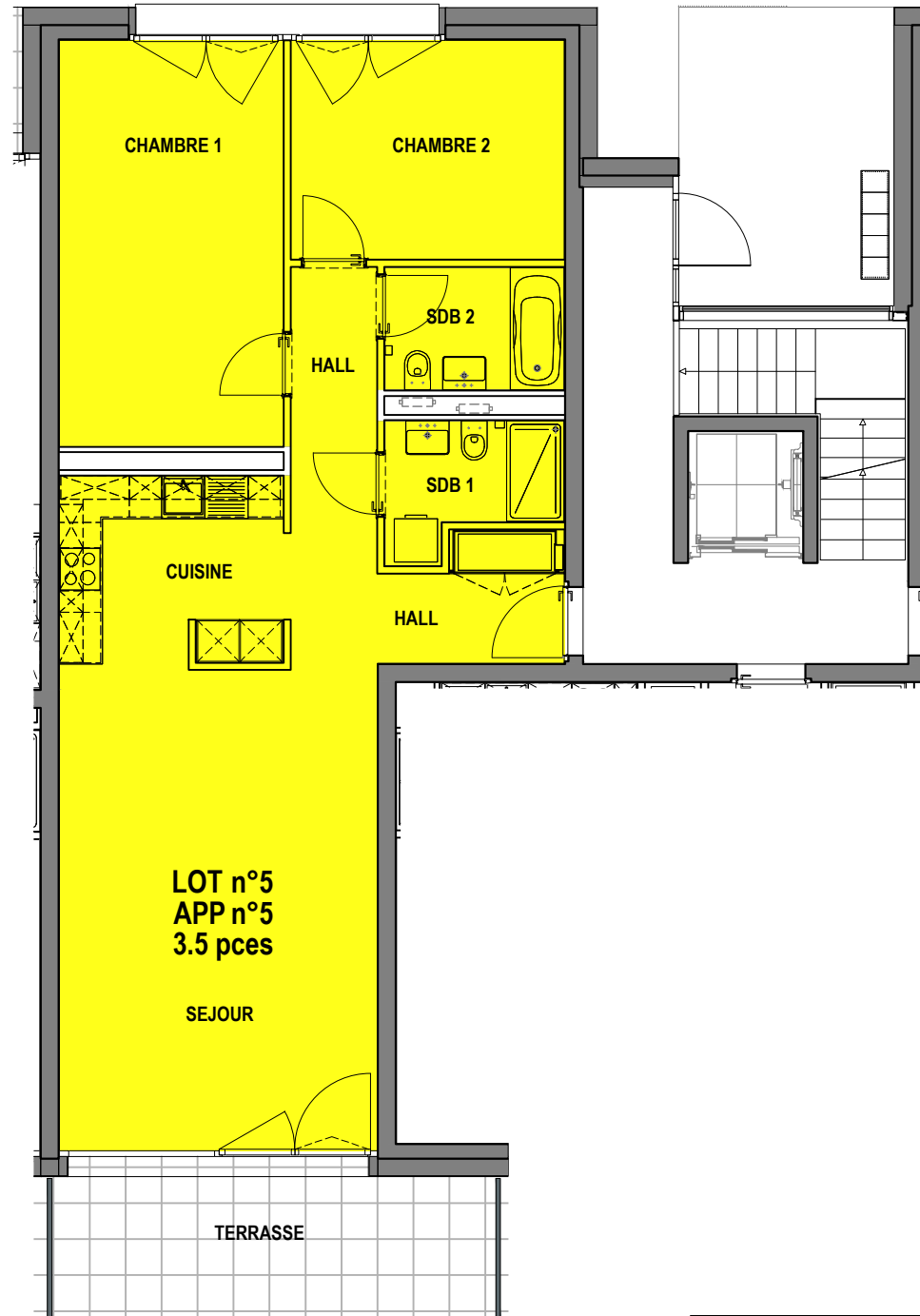
3.5 PIECES

[surface habit.uspi] 88.0 m²
 [surface terrasse] 13.5 m²

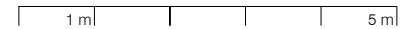
CAVE 5.0 m²

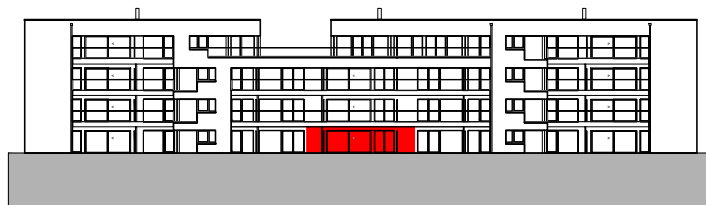
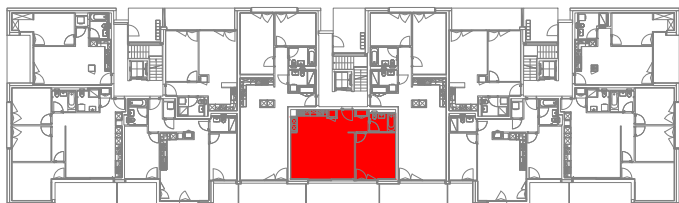
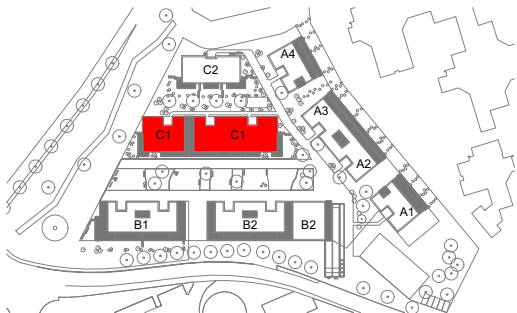
REZ-DE-CHAUSSÉE

20.12.2023
 PEZZOLI & ASSOCIÉS | ARCHITECTES



PLAN 1:100





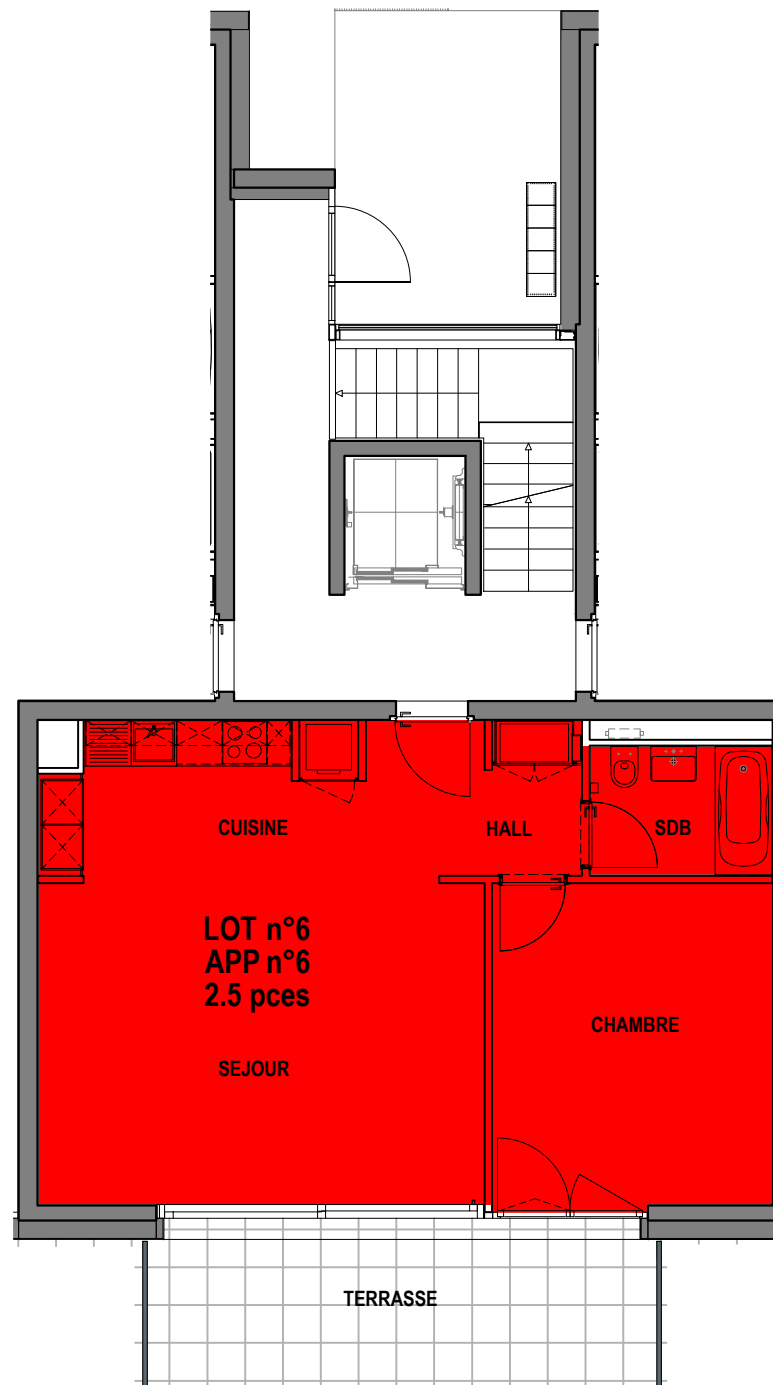
La Clochette
Mont-s/Lausanne
PPE "BATIMENT C1"
LOT n°6
APP n°6

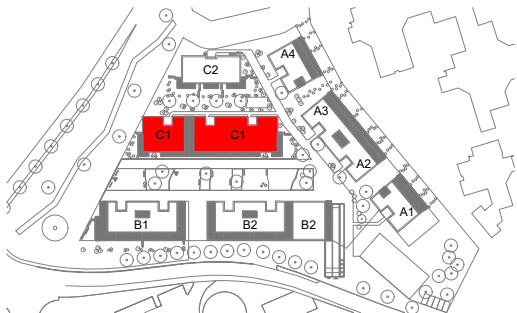
2.5 PIECES

[surface habit.uspi] 61.0 m²
 [surface terrasse] 15.0 m²

CAVE 5.0 m²

REZ-DE-CHAUSSÉE





La Clochette
Mont-s/Lausanne
PPE "BATIMENT C1"
LOT n°7
APP n°7

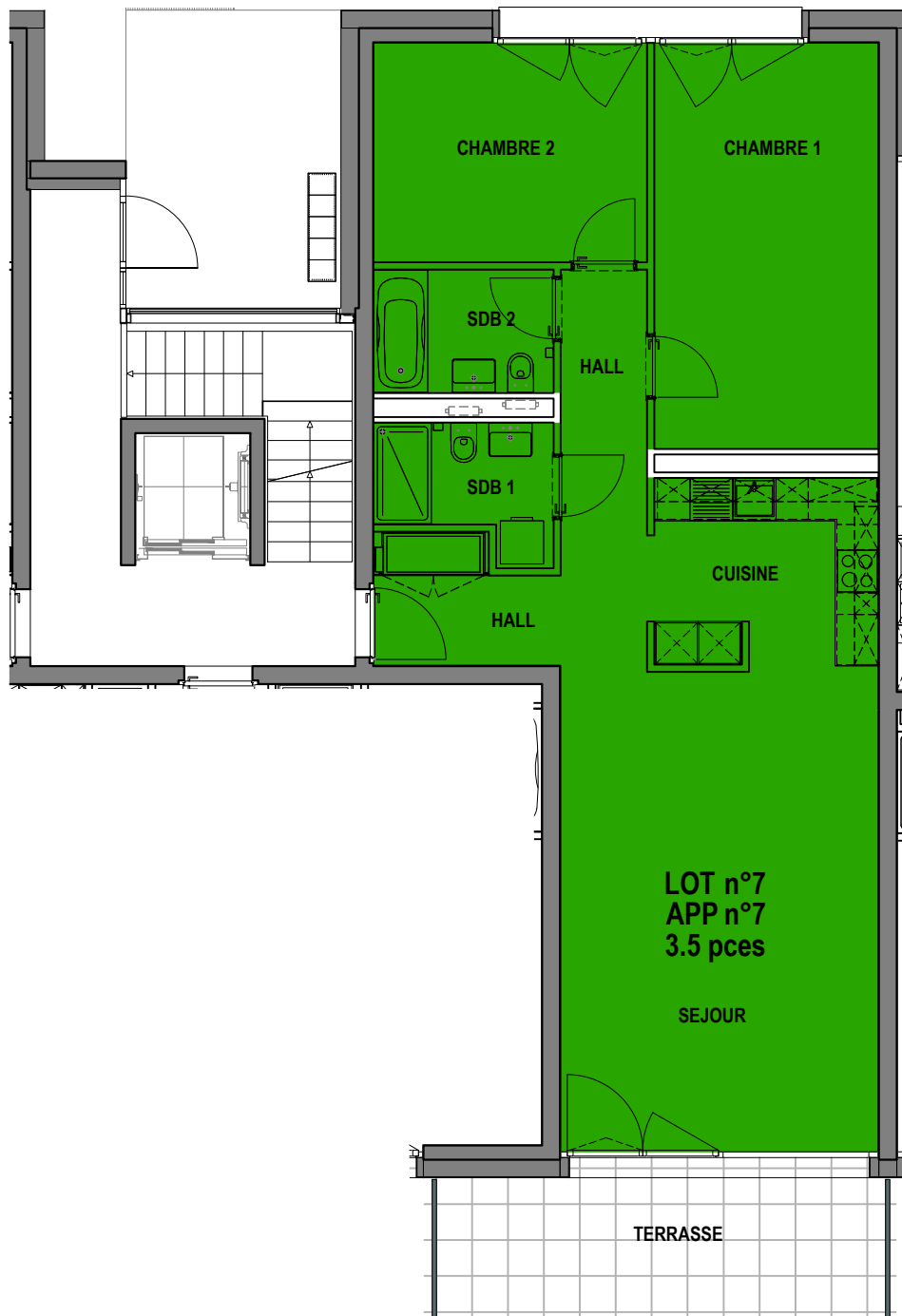
3.5 PIECES

[surface habit.uspi] 88.0 m²
 [surface terrasse] 13.5 m²

CAVE 5.0 m²

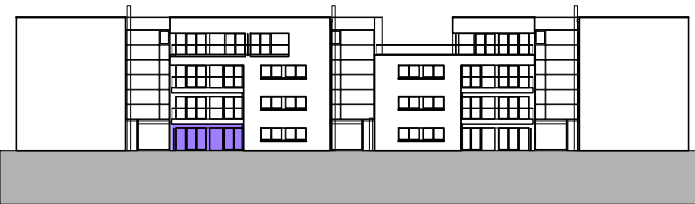
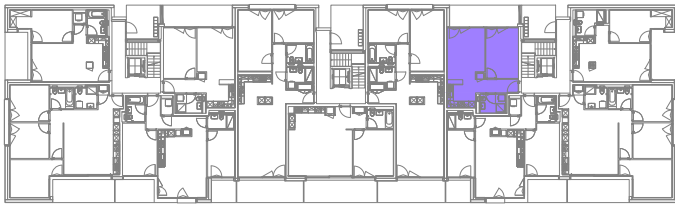
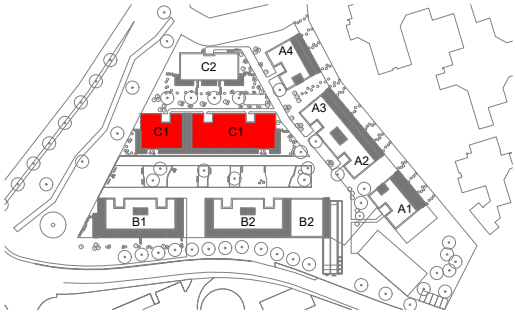
REZ-DE-CHAUSSÉE

20.12.2023
 PEZZOLI & ASSOCIÉS | ARCHITECTES



PLAN 1:100 1 m 5 m





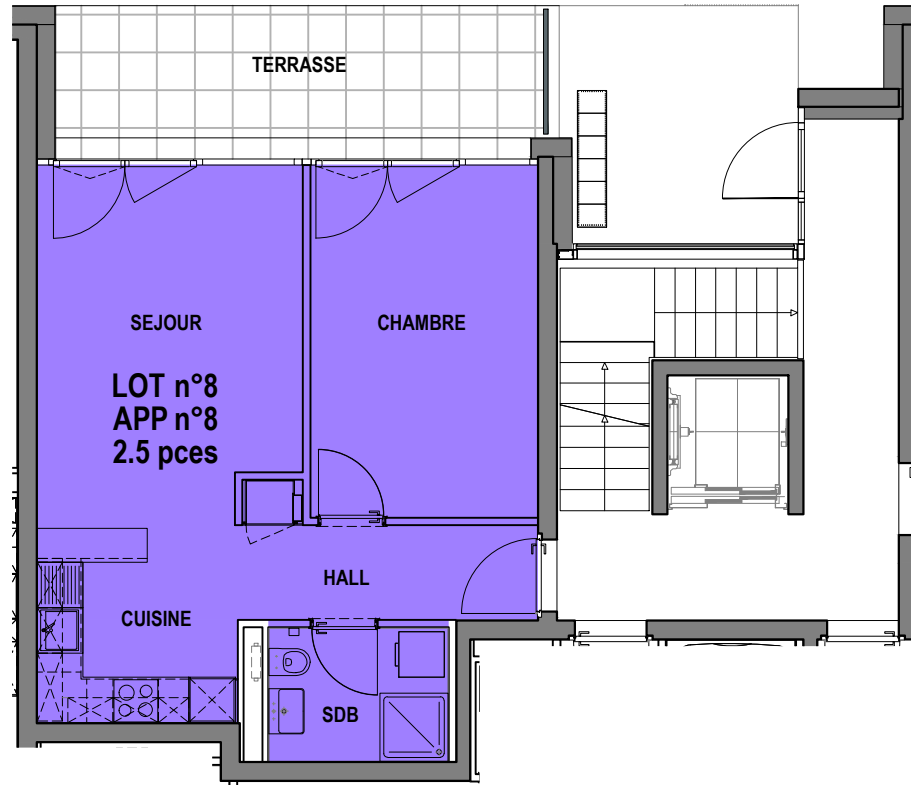
La Clochette
Mont-s/Lausanne
PPE "BATIMENT C1"
LOT n°8
APP n°8

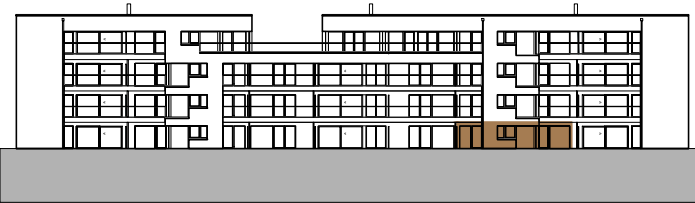
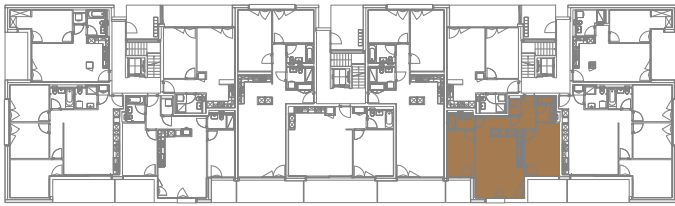
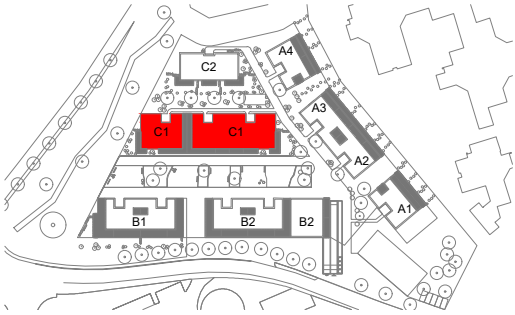
2.5 PIECES

[surface habit.uspi] 47.5 m²
 [surface terrasse] 13.0 m²

CAVE 6.0 m²

REZ-DE-CHAUSSÉE





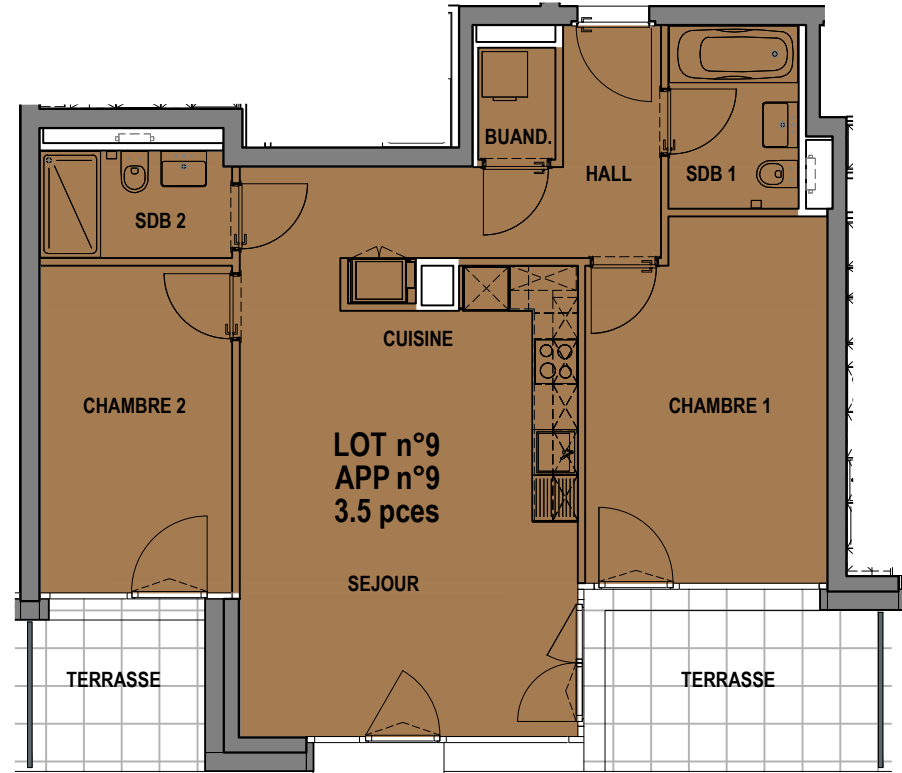
La Clochette
Mont-s/Lausanne
PPE "BATIMENT C1"
LOT n°9
APP n°9

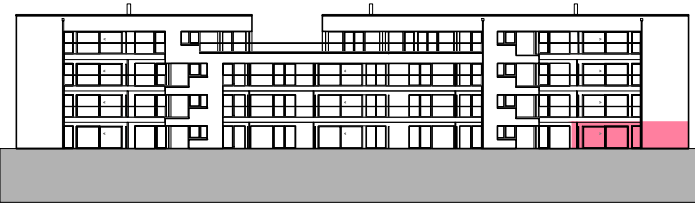
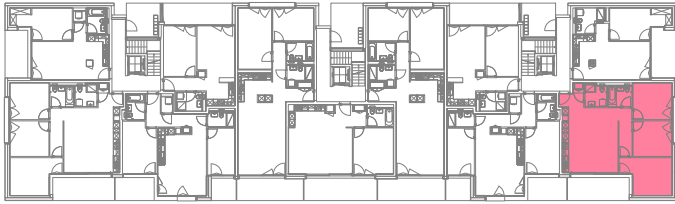
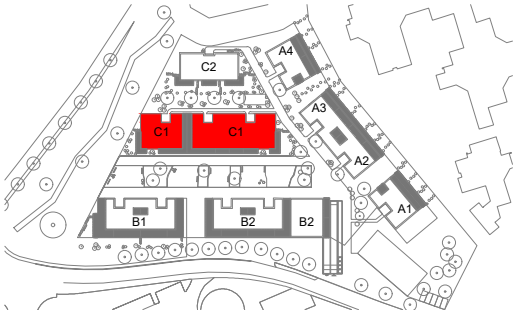
3.5 PIECES

[surface habit.uspi] 74.0 m²
 [surfaces terrasses] 14.0 m²

CAVE 6.0 m²

REZ-DE-CHAUSSÉE





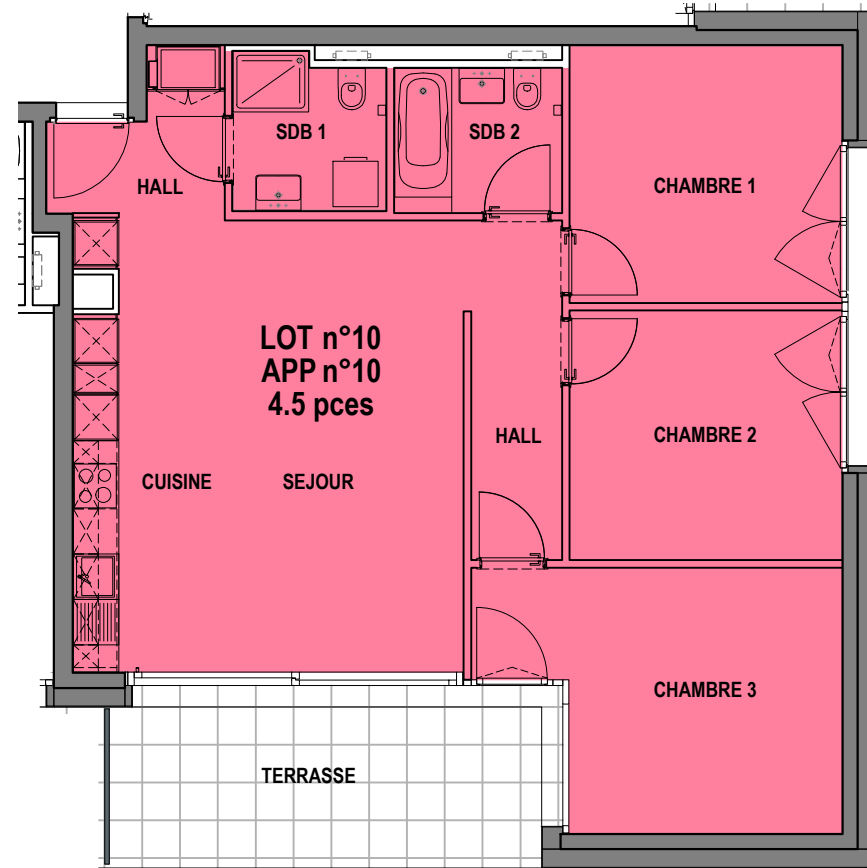
La Clochette
Mont-s/Lausanne
PPE "BATIMENT C1"
LOT n°10
APP n°10

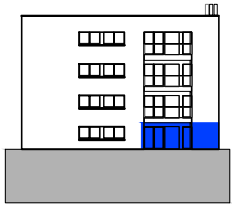
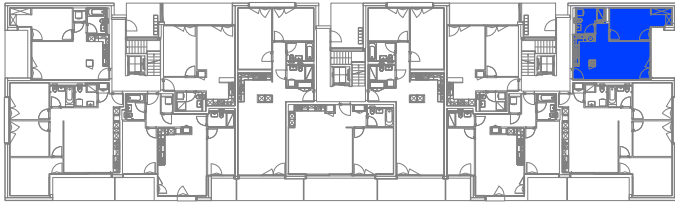
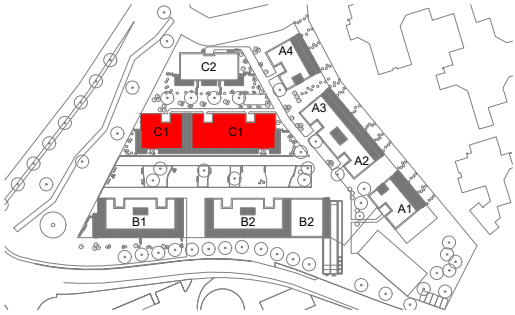
4.5 PIECES

[surface habit.uspi] 90.0 m²
 [surface terrasse] 14.0 m²

CAVE 6.5 m²

REZ-DE-CHAUSSÉE





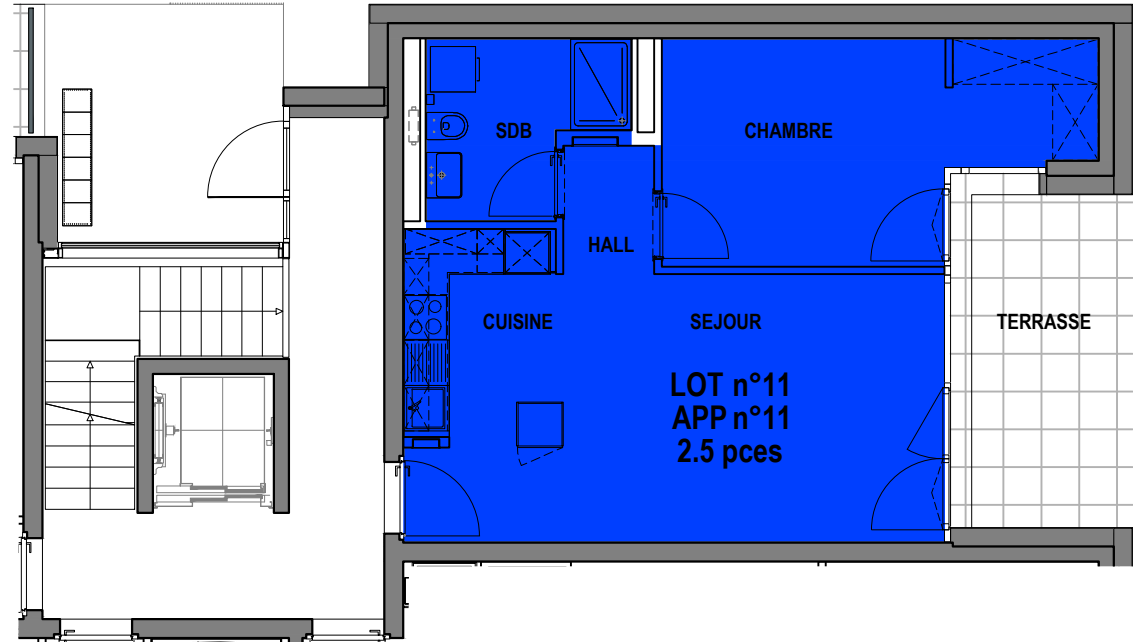
La Clochette
Mont-s/Lausanne
PPE "BATIMENT C1"
LOT n°11
APP n°11

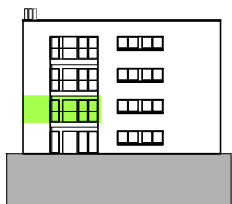
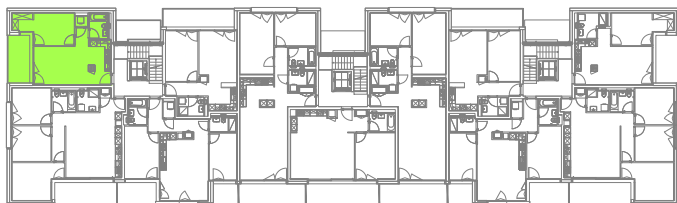
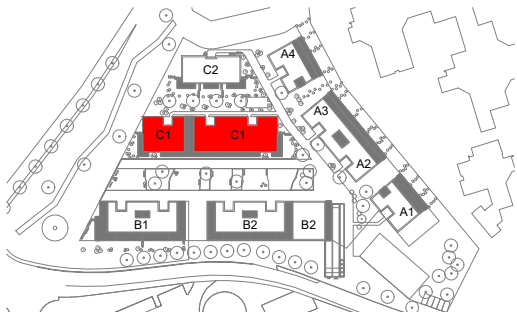
2.5 PIECES

[surface habit.uspi] 49.5 m²
 [surface terrasse] 10.5 m²

CAVE 6.0 m²

REZ-DE-CHAUSSÉE





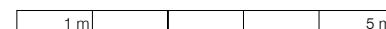
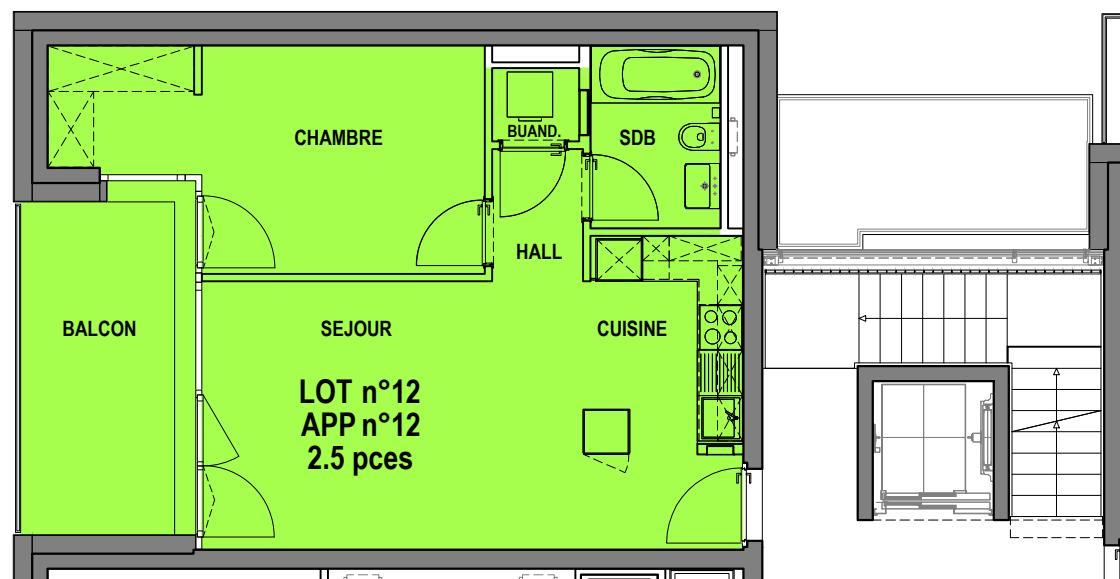
La Clochette
Mont-s/Lausanne
PPE "BATIMENT C1"
LOT n°12
APP n°12

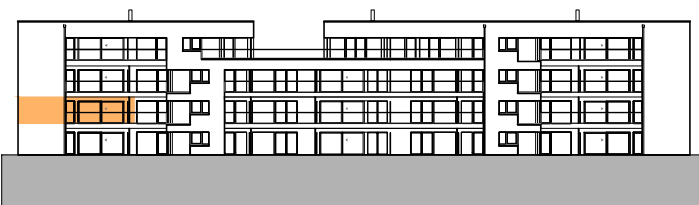
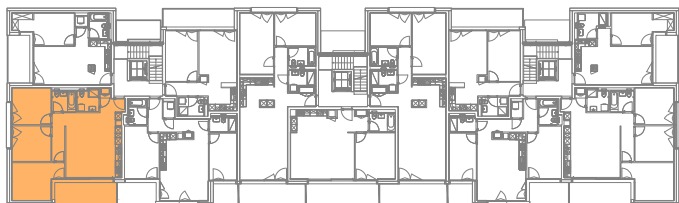
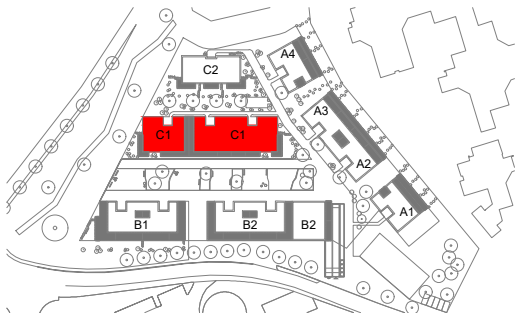
2.5 PIECES

[surface habit.uspi] 49.5 m²
 [surface balcon] 10.5 m²

CAVE 5.5 m²

1er ETAGE





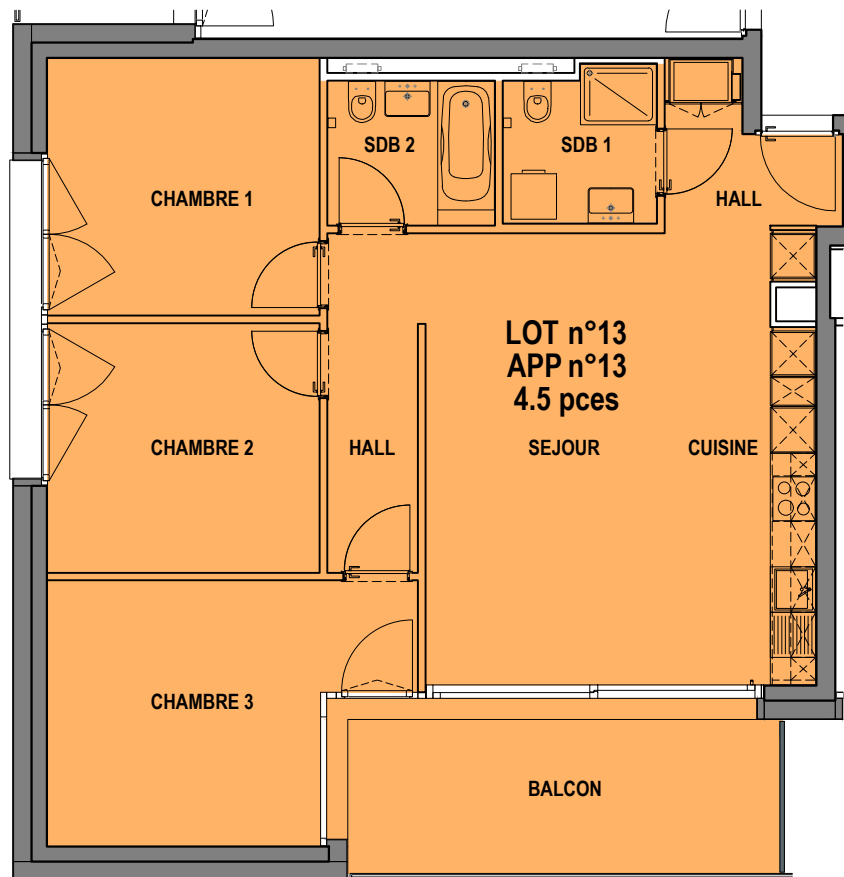
La Clochette
Mont-s/Lausanne
PPE "BATIMENT C1"
LOT n°13
APP n°13

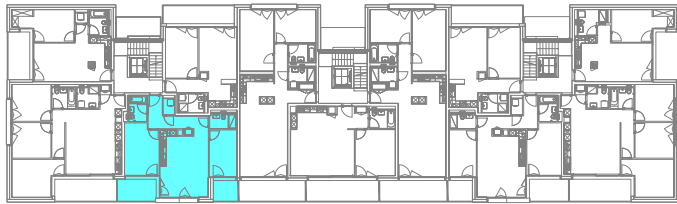
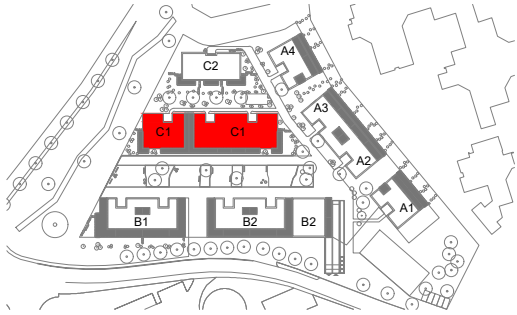
4.5 PIECES

[surface habit.uspi] 90.0 m²
 [surface balcon] 13.5 m²

CAVE 7.0 m²

1er ETAGE





La Clochette
Mont-s/Lausanne
PPE "BATIMENT C1"
LOT n°14
APP n°14

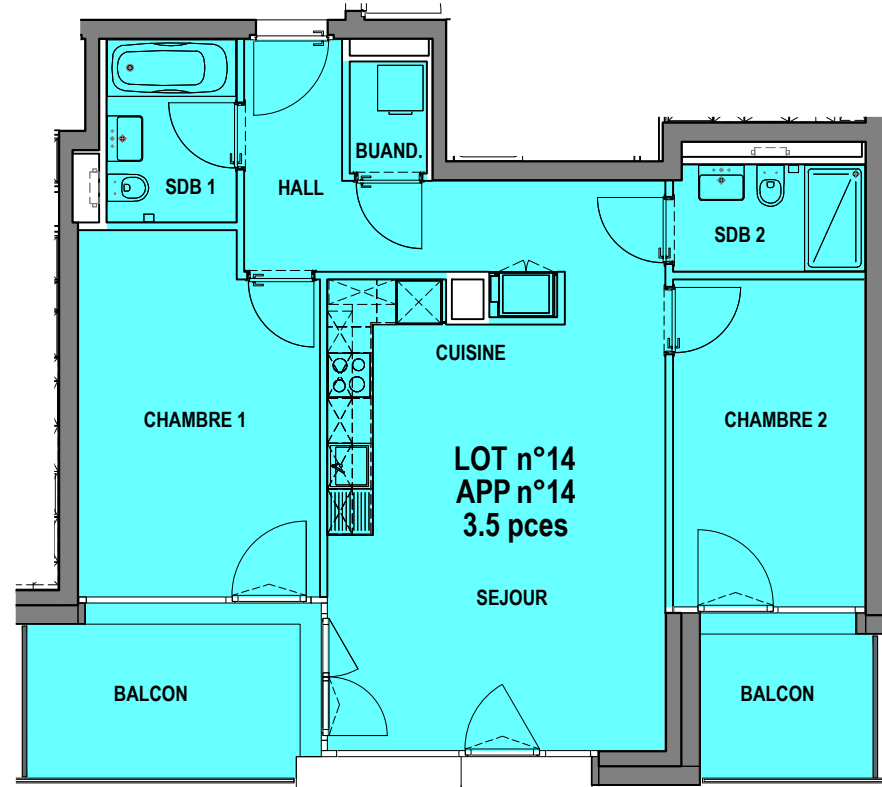
3.5 PIECES

[surface habit.uspi] 74.0 m²
 [surfaces balcons] 13.5 m²

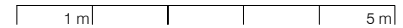
CAVE 5.5 m²

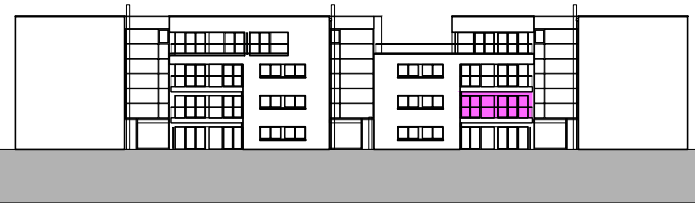
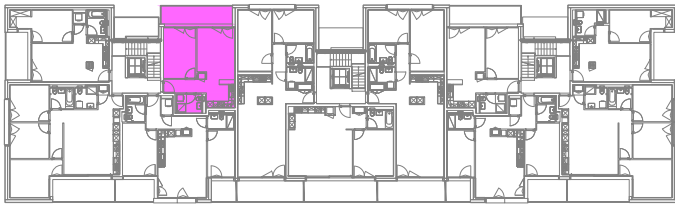
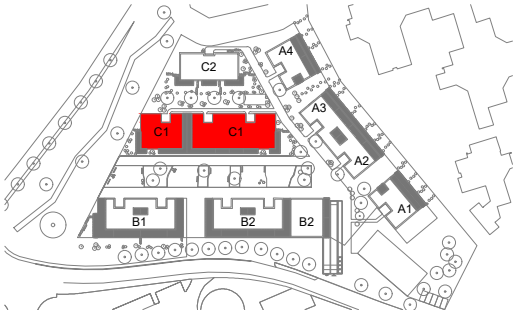
1er ETAGE

20.12.2023
 PEZZOLI & ASSOCIÉS | ARCHITECTES



PLAN 1:100





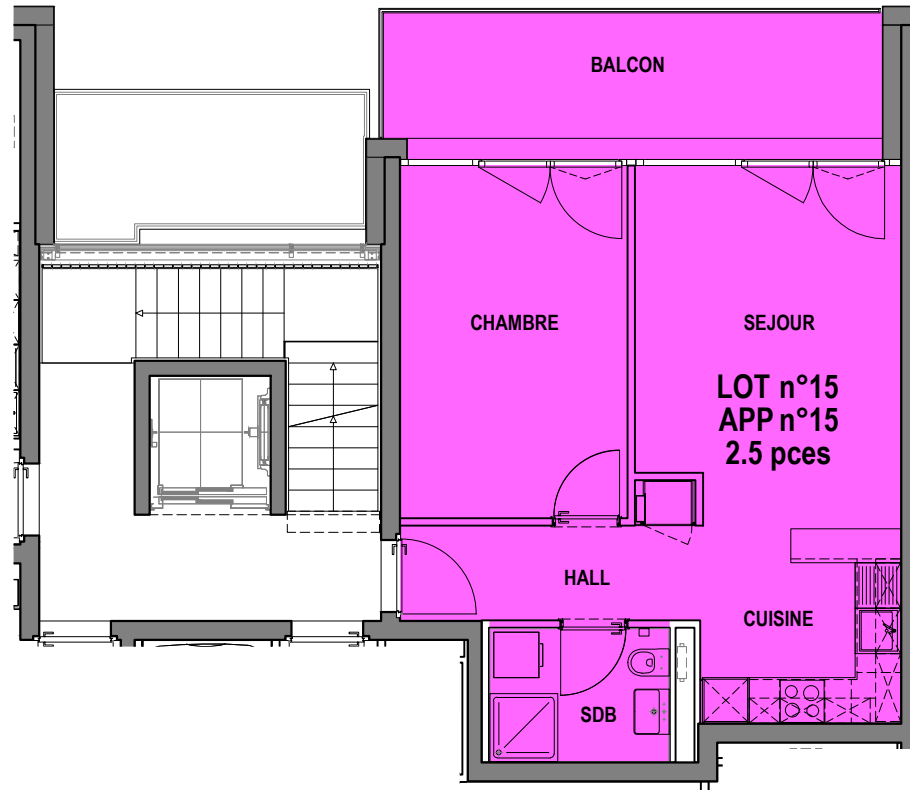
La Clochette
Mont-s/Lausanne
PPE "BATIMENT C1"
LOT n°15
APP n°15

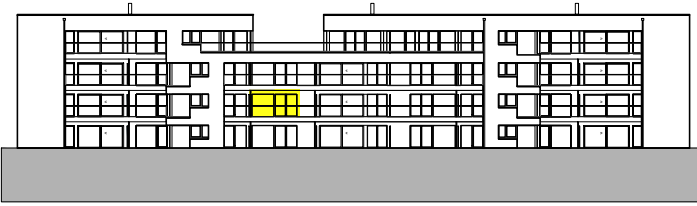
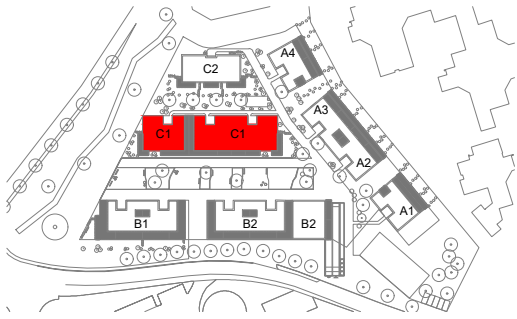
2.5 PIECES

[surface habit.uspi] 47.5 m²
 [surface balcon] 12.5 m²

CAVE 5.5 m²

1er ETAGE





La Clochette
Mont-s/Lausanne
PPE "BATIMENT C1"
LOT n°16
APP n°16

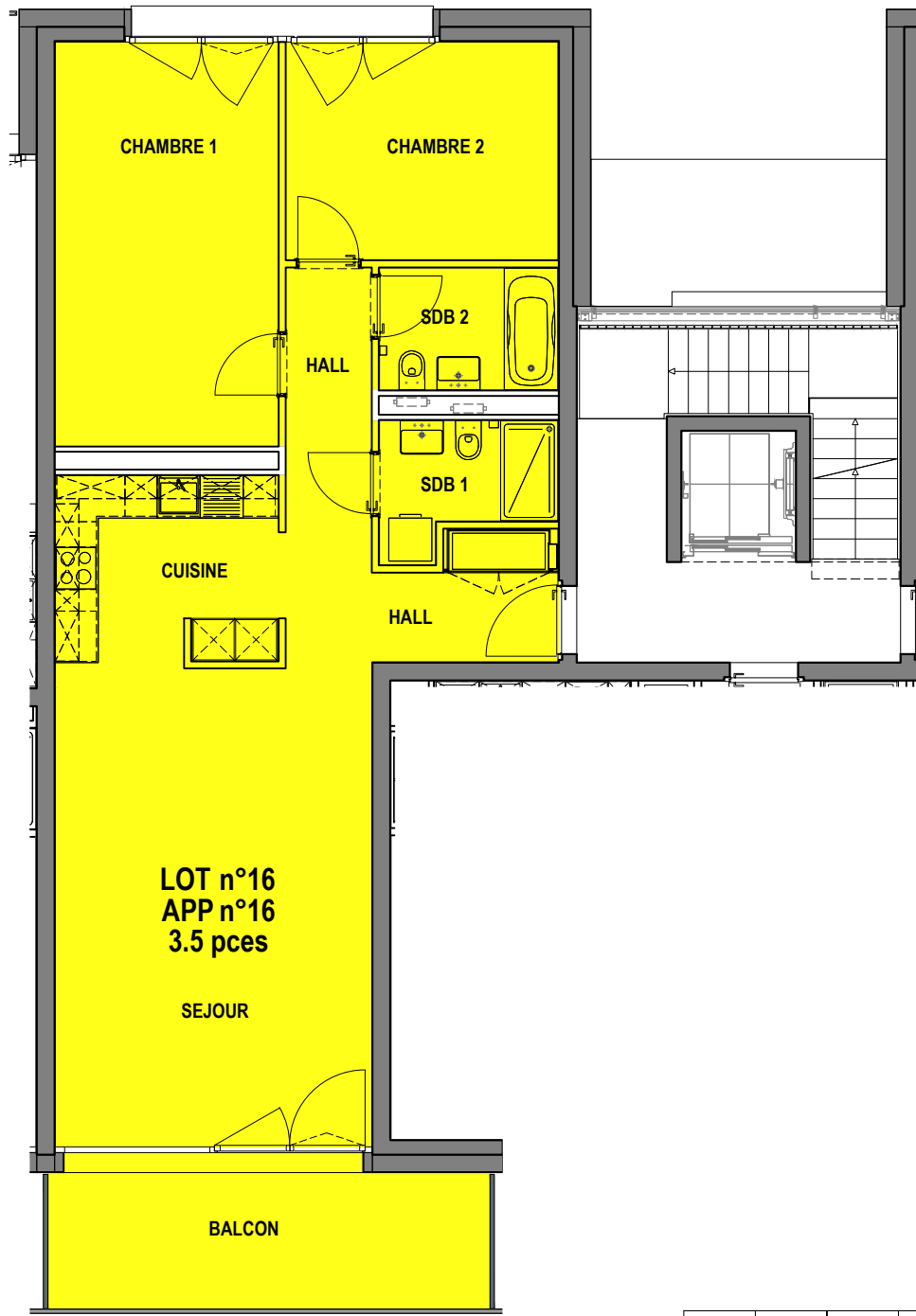
3.5 PIECES

[surface habit.uspi] 88.0 m²
 [surface balcon] 13.0 m²

CAVE 5.0 m²

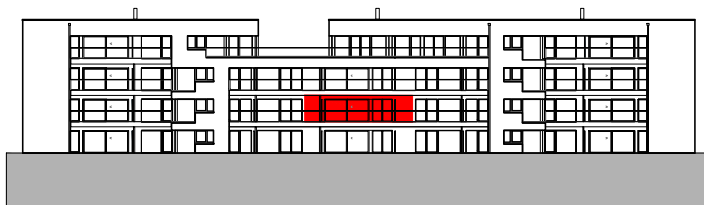
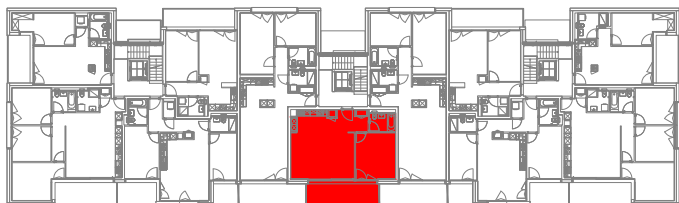
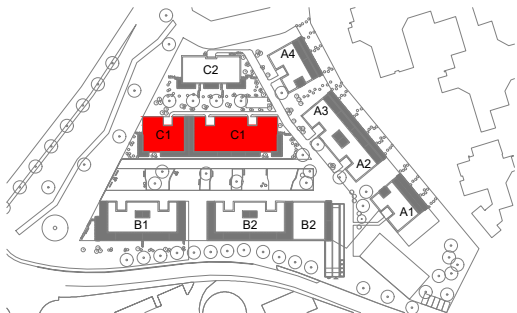
1er ETAGE

20.12.2023
PEZZOLI & ASSOCIÉS | ARCHITECTES



PLAN 1:100



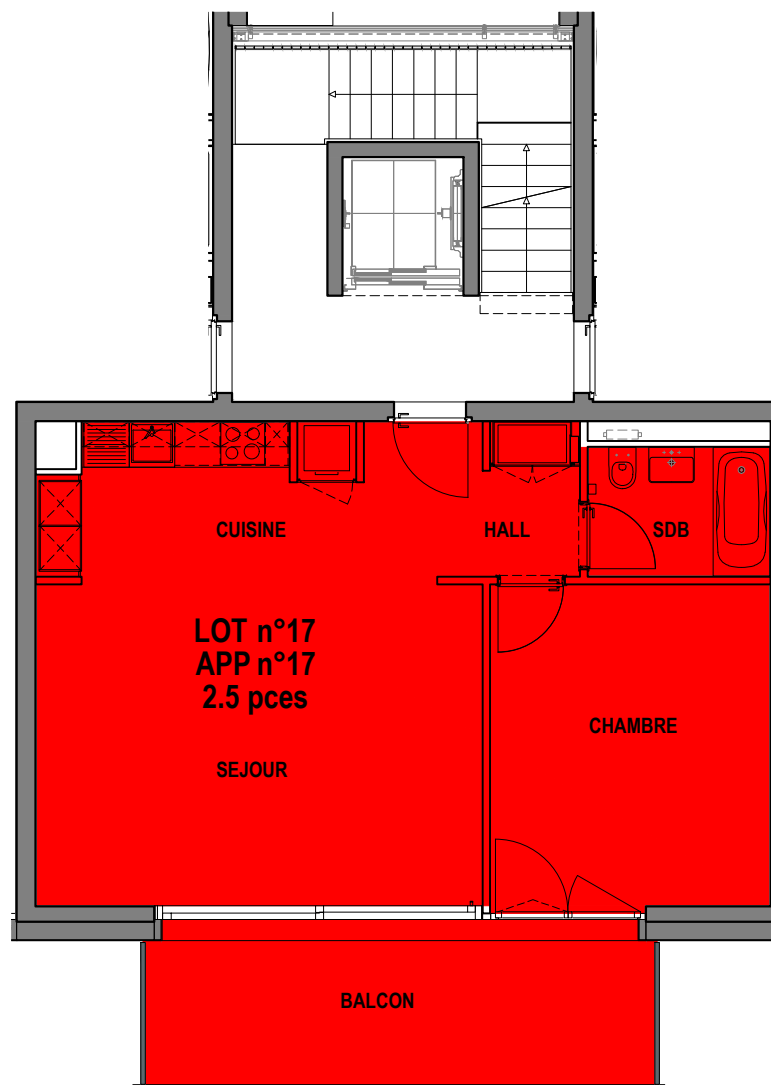


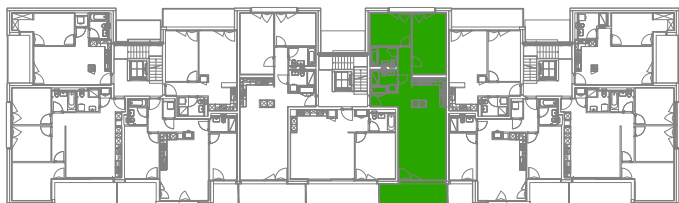
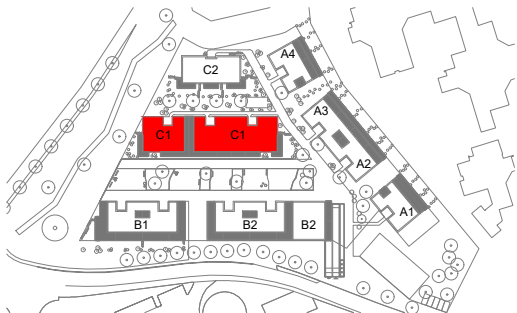
La Clochette
 Mont-s/Lausanne
 PPE "BATIMENT C1"
 LOT n°17
 APP n°17

2.5 PIECES

[surface habit.uspi]	61.0 m ²
[surface balcon]	14.5 m ²
CAVE	5.5 m ²

1er ETAGE





La Clochette
Mont-s/Lausanne
PPE "BATIMENT C1"
LOT n°18
APP n°18

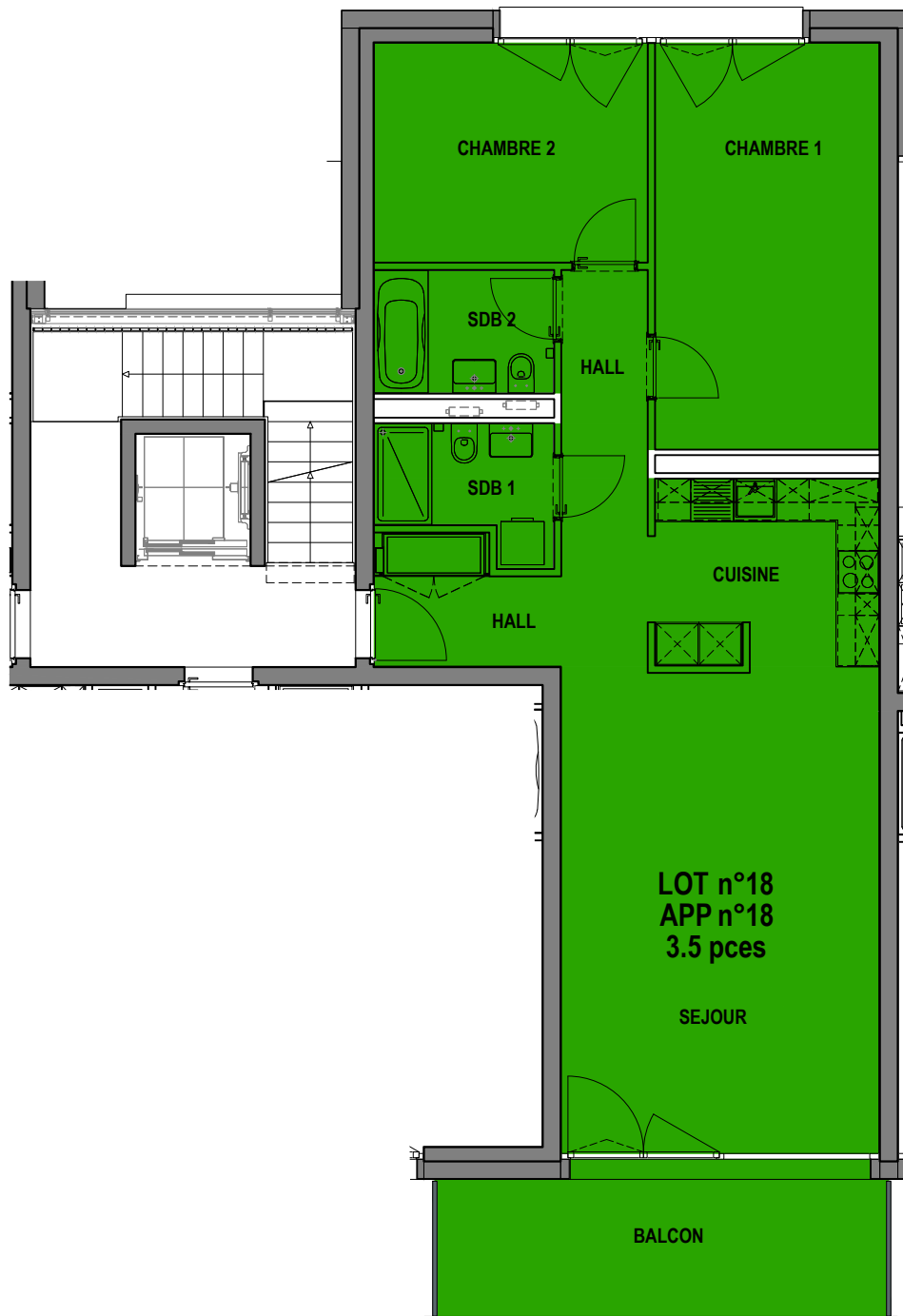
3.5 PIECES

[surface habit.uspi] 88.0 m²
 [surface balcon] 13.0 m²

CAVE 5.5 m²

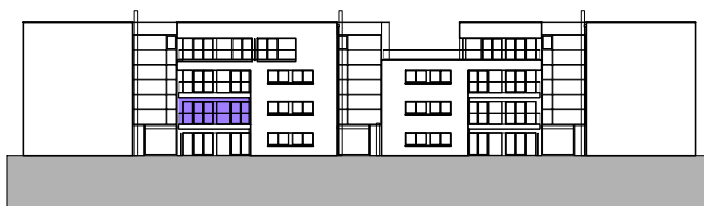
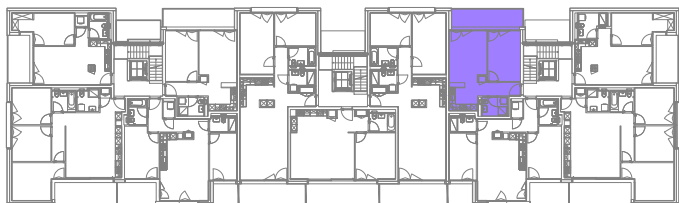
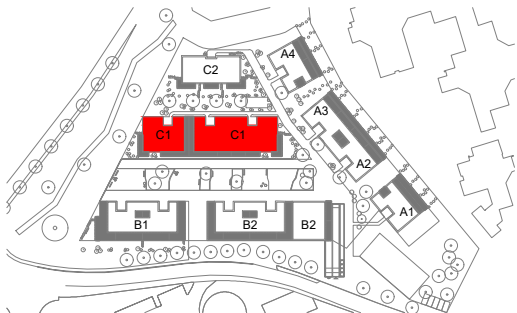
1er ETAGE

20.12.2023
 PEZZOLI & ASSOCIÉS | ARCHITECTES



PLAN 1:100 | 1 m | 5 m





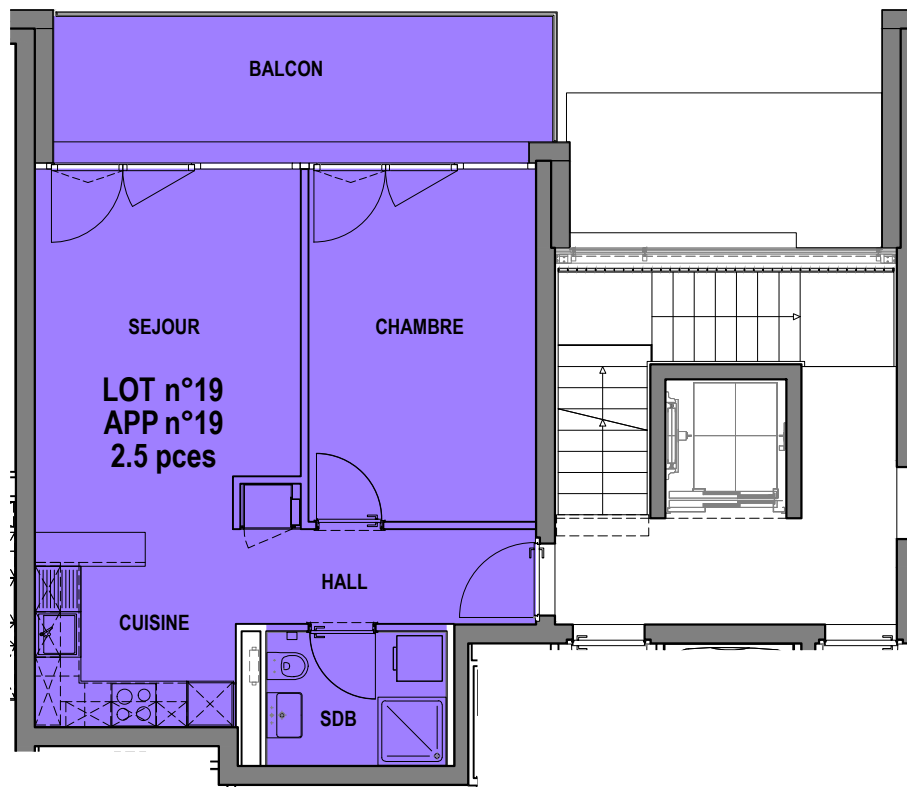
La Clochette
Mont-s/Lausanne
PPE "BATIMENT C1"
LOT n°19
APP n°19

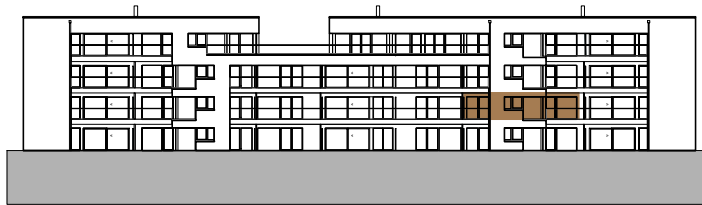
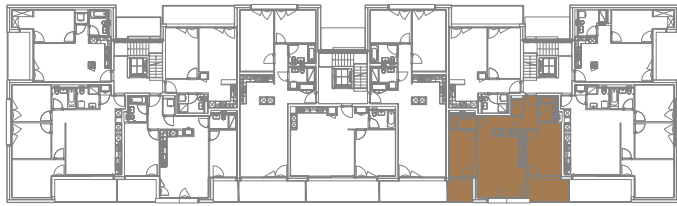
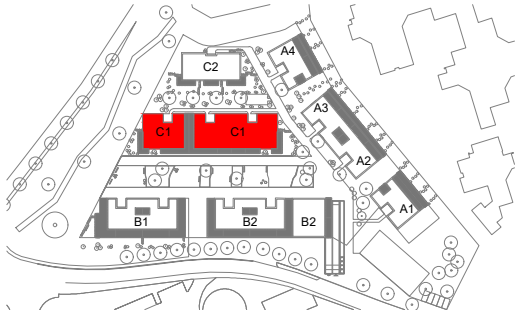
2.5 PIECES

[surface habit.uspi] 47.5 m²
 [surface balcon] 12.5 m²

CAVE 6.0 m²

1er ETAGE





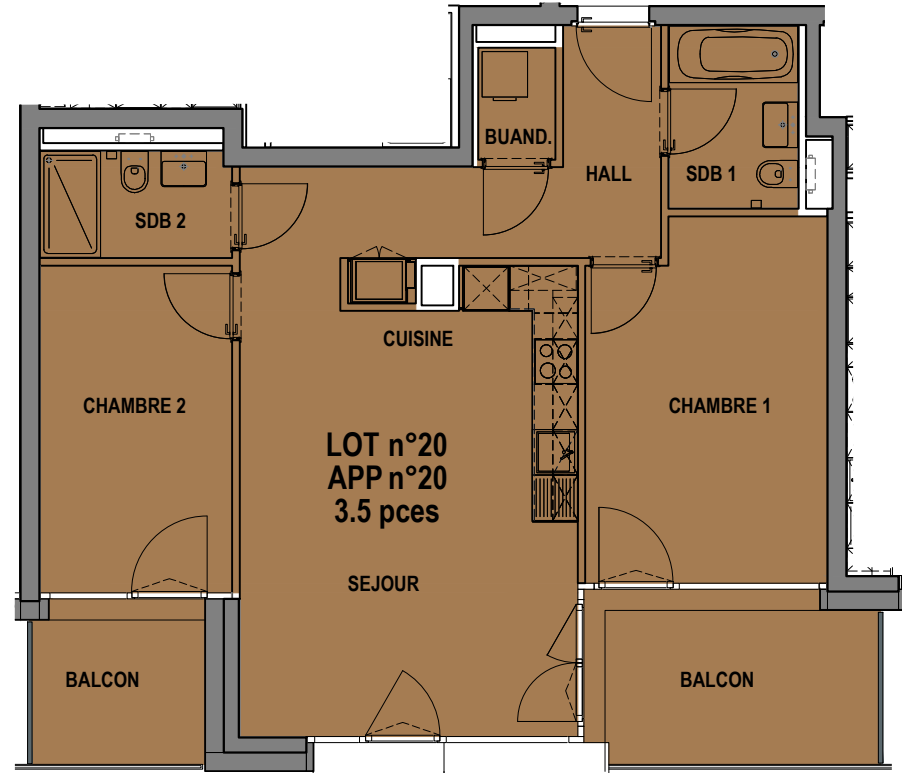
La Clochette
Mont-s/Lausanne
PPE "BATIMENT C1"
LOT n°20
APP n°20

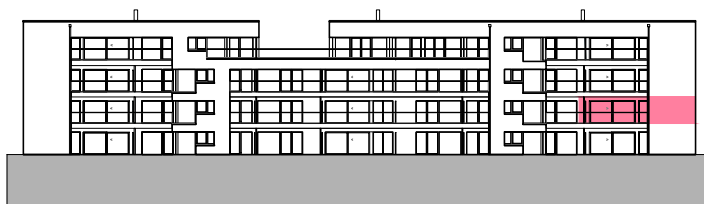
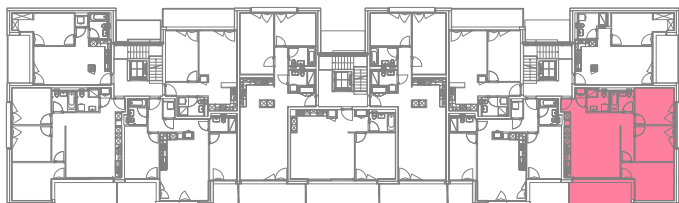
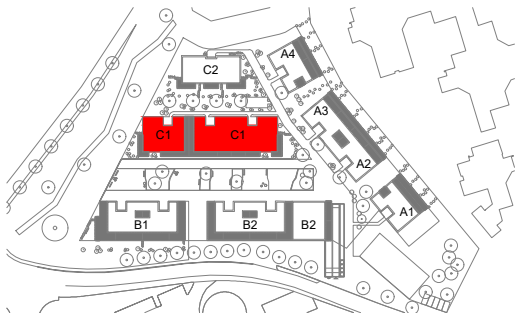
3.5 PIECES

[surface habit.uspi] 74.0 m²
 [surfaces balcons] 13.5 m²

CAVE 6.0 m²

1er ETAGE





La Clochette
Mont-s/Lausanne
PPE "BATIMENT C1"
LOT n°21
APP n°21

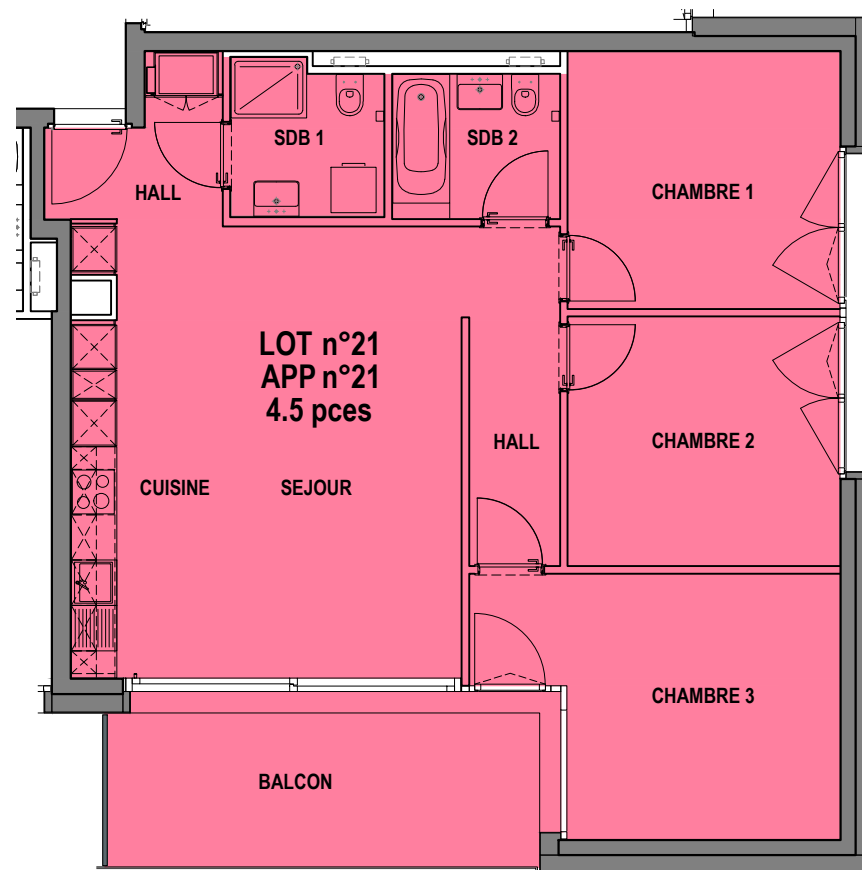
4.5 PIECES

[surface habit.uspi] 90.0 m²
 [surface balcon] 13.5 m²

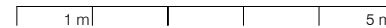
CAVE 6.5 m²

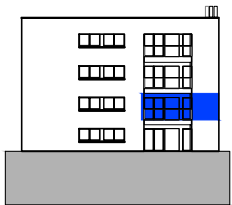
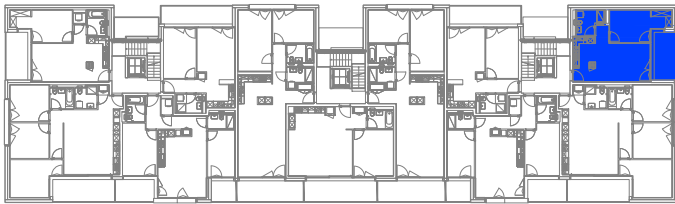
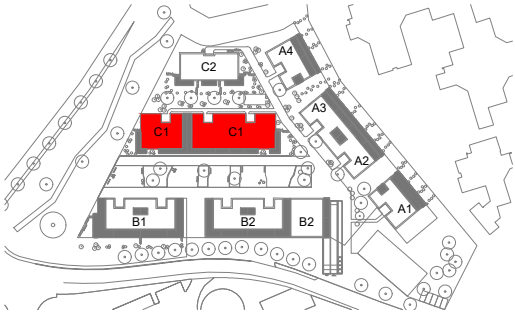
1er ETAGE

19.01.2024
 PEZZOLI & ASSOCIÉS | ARCHITECTES



PLAN 1:100





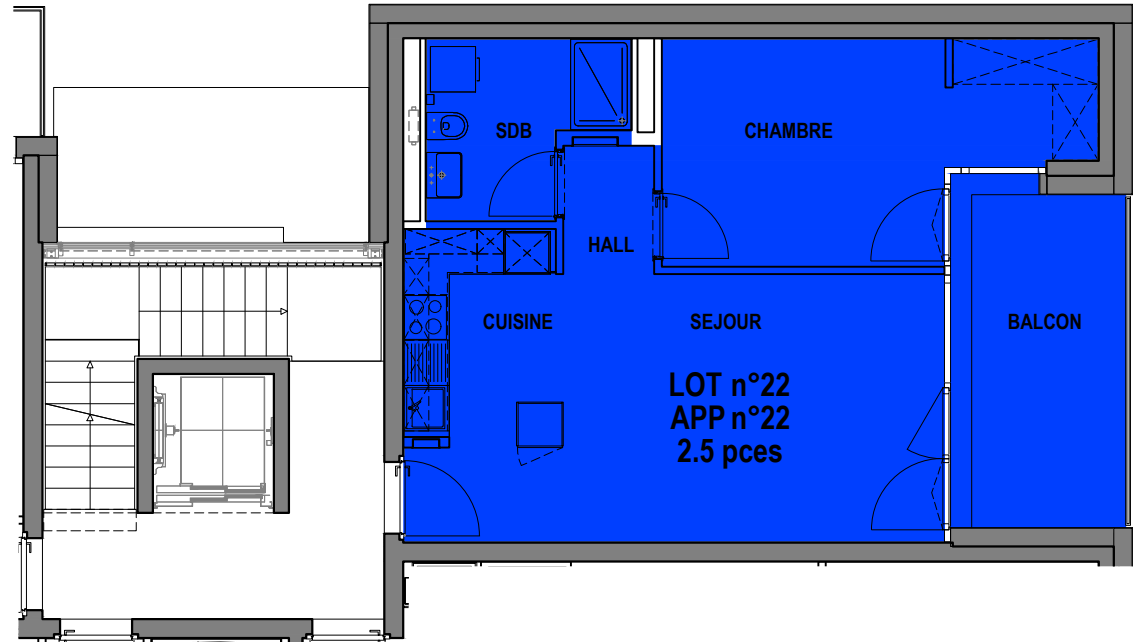
La Clochette
Mont-s/Lausanne
PPE "BATIMENT C1"
LOT n°22
APP n°22

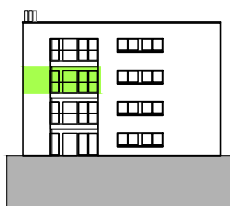
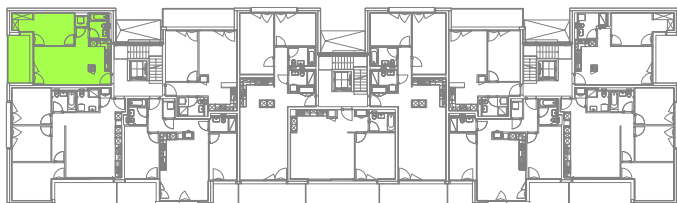
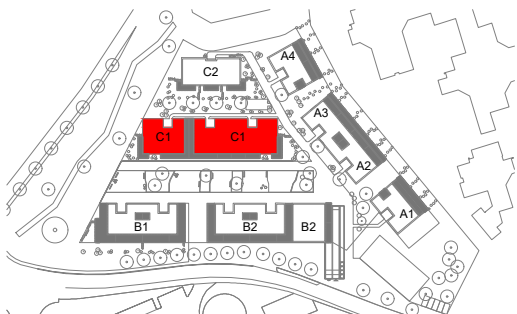
2.5 PIECES

[surface habit.uspi] 49.5 m²
 [surface balcon] 10.5 m²

CAVE 6.0 m²

1er ETAGE





La Clochette
Mont-s/Lausanne
PPE "BATIMENT C1"
LOT n°23
APP n°23

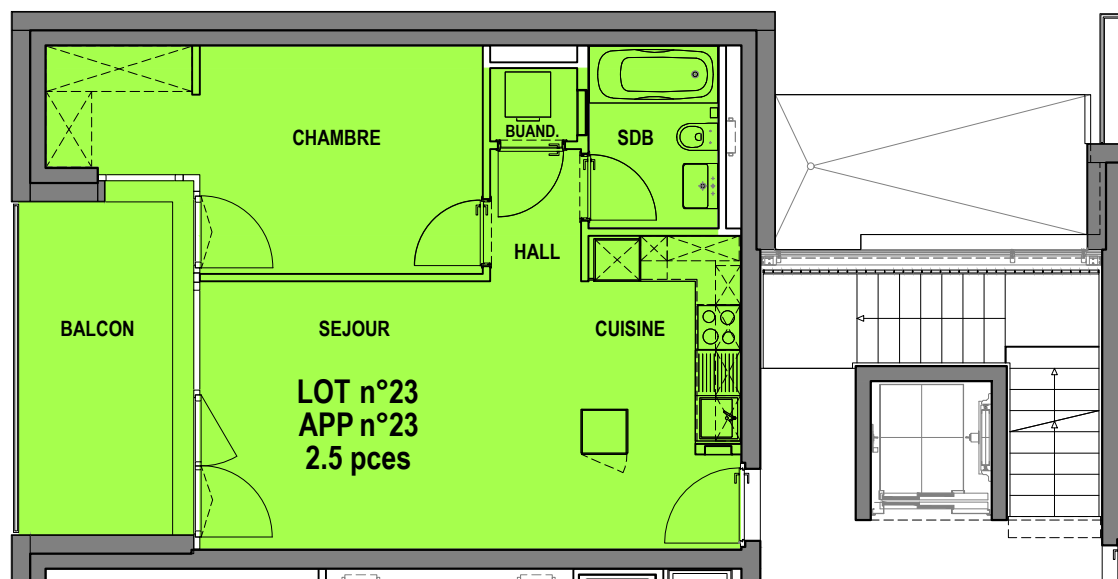
2.5 PIECES

[surface habit.uspi] 49.5 m²
 [surface balcon] 10.5 m²

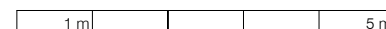
CAVE 5.5 m²

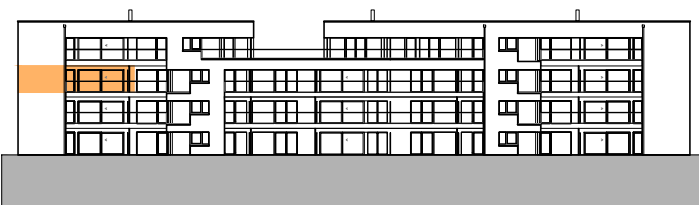
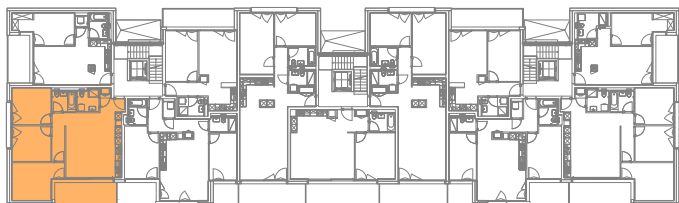
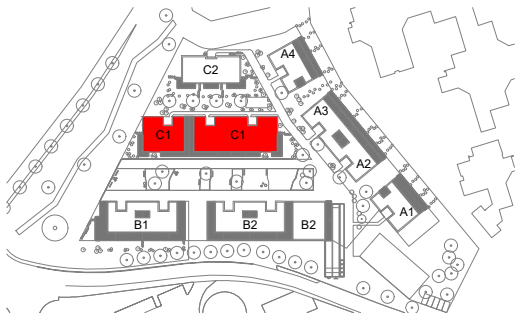
2e ETAGE

20.12.2023
 PEZZOLI & ASSOCIÉS | ARCHITECTES



PLAN 1:100





La Clochette
Mont-s/Lausanne
PPE "BATIMENT C1"
LOT n°24
APP n°24

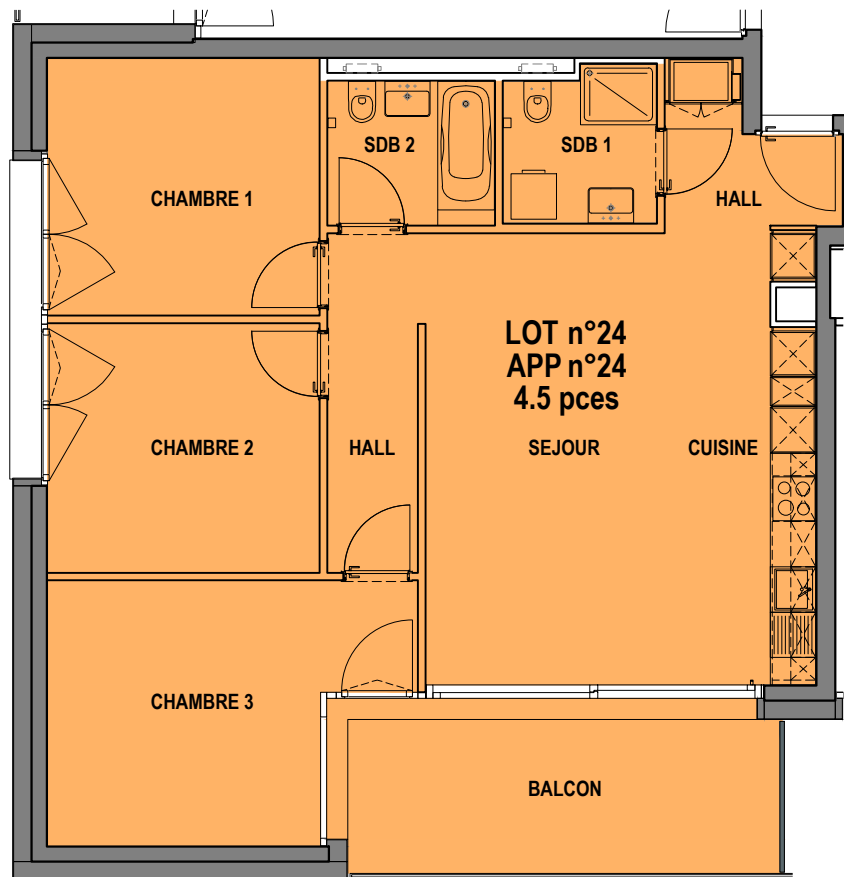
4.5 PIECES

[surface habit.uspi] 90.0 m²
 [surface balcon] 13.5 m²

CAVE 7.0 m²

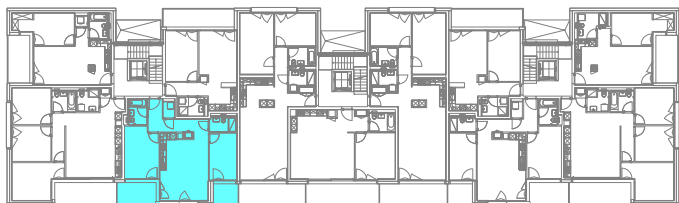
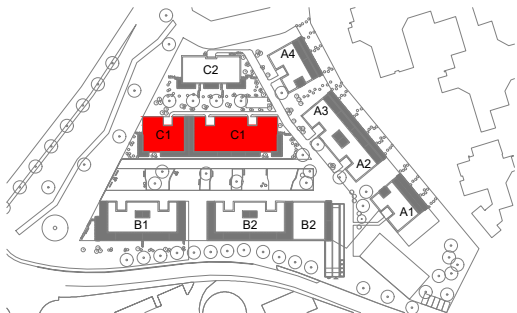
2e ETAGE

19.01.2024
 PEZZOLI & ASSOCIÉS | ARCHITECTES



PLAN 1:100 1 m 5 m





La Clochette
Mont-s/Lausanne
PPE "BATIMENT C1"
LOT n°25
APP n°25

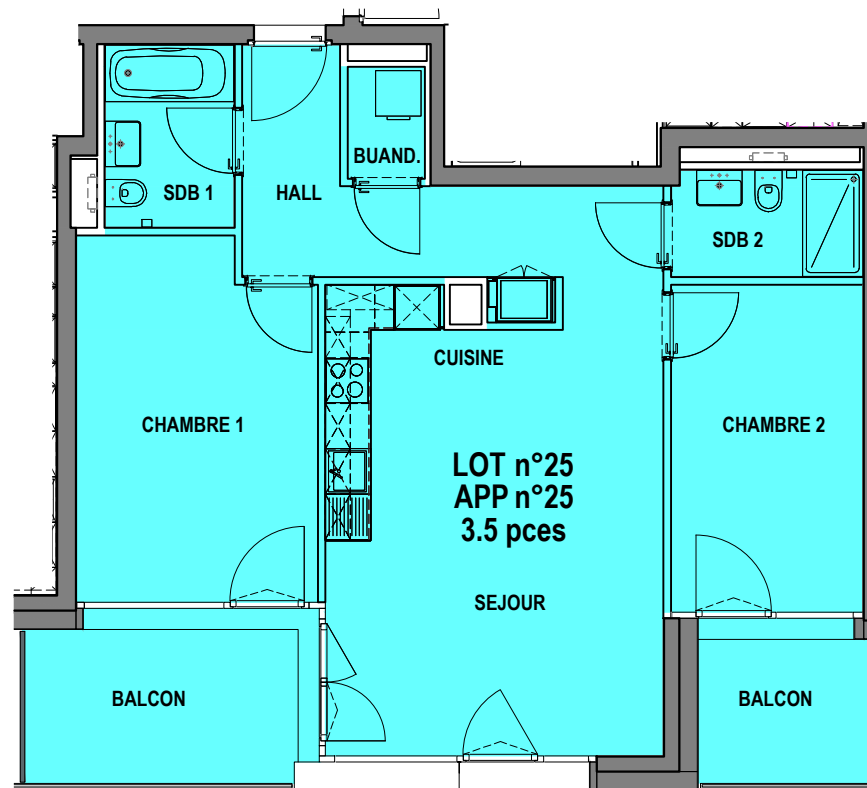
3.5 PIECES

[surface habit.uspi] 74.0 m²
 [surfaces balcons] 13.5 m²

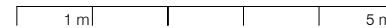
CAVE 5.5 m²

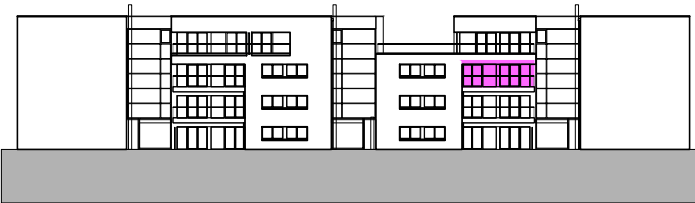
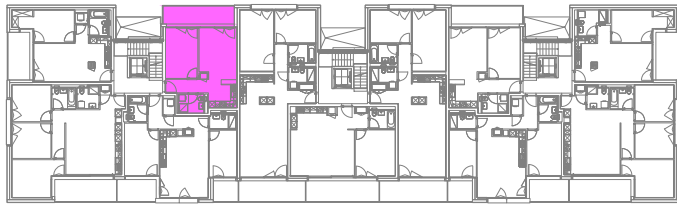
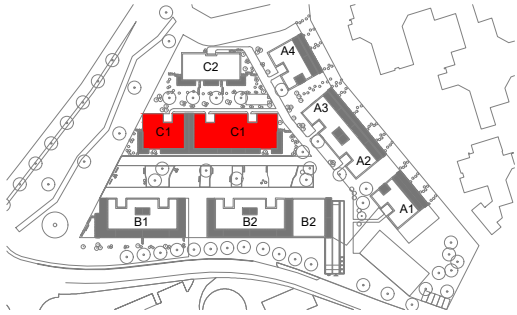
2e ETAGE

20.12.2023
 PEZZOLI & ASSOCIÉS | ARCHITECTES



PLAN 1:100





La Clochette
Mont-s/Lausanne
PPE "BATIMENT C1"
LOT n°26
APP n°26

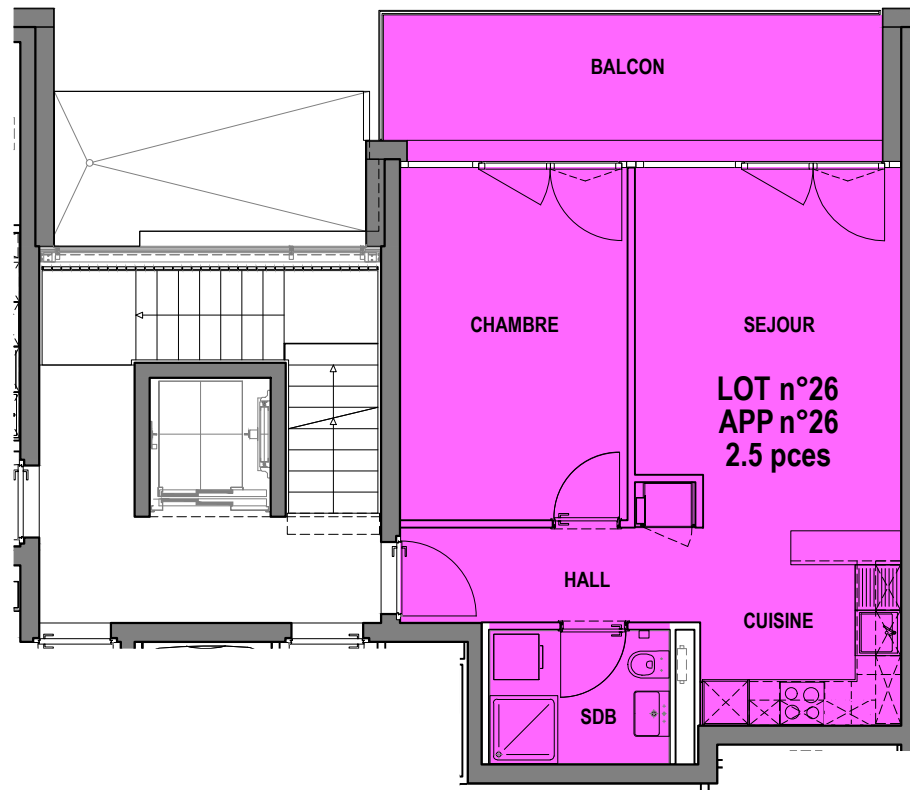
2.5 PIECES

[surface habit.uspi] 47.5 m²
 [surface balcon] 12.5 m²

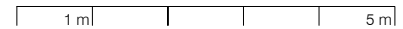
CAVE 5.5 m²

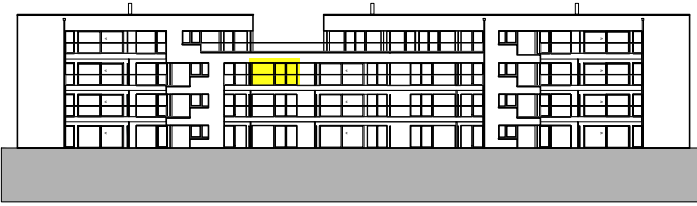
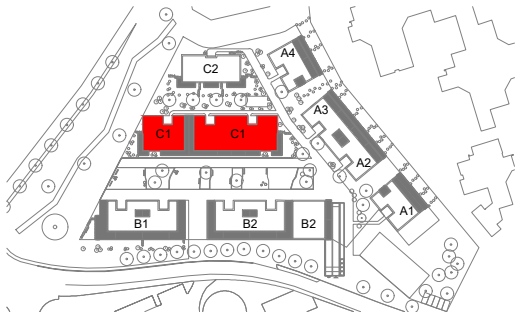
2e ETAGE

20.12.2023
PEZZOLI & ASSOCIÉS | ARCHITECTES



PLAN 1:100





La Clochette
Mont-s/Lausanne
PPE "BATIMENT C1"
LOT n°27
APP n°27

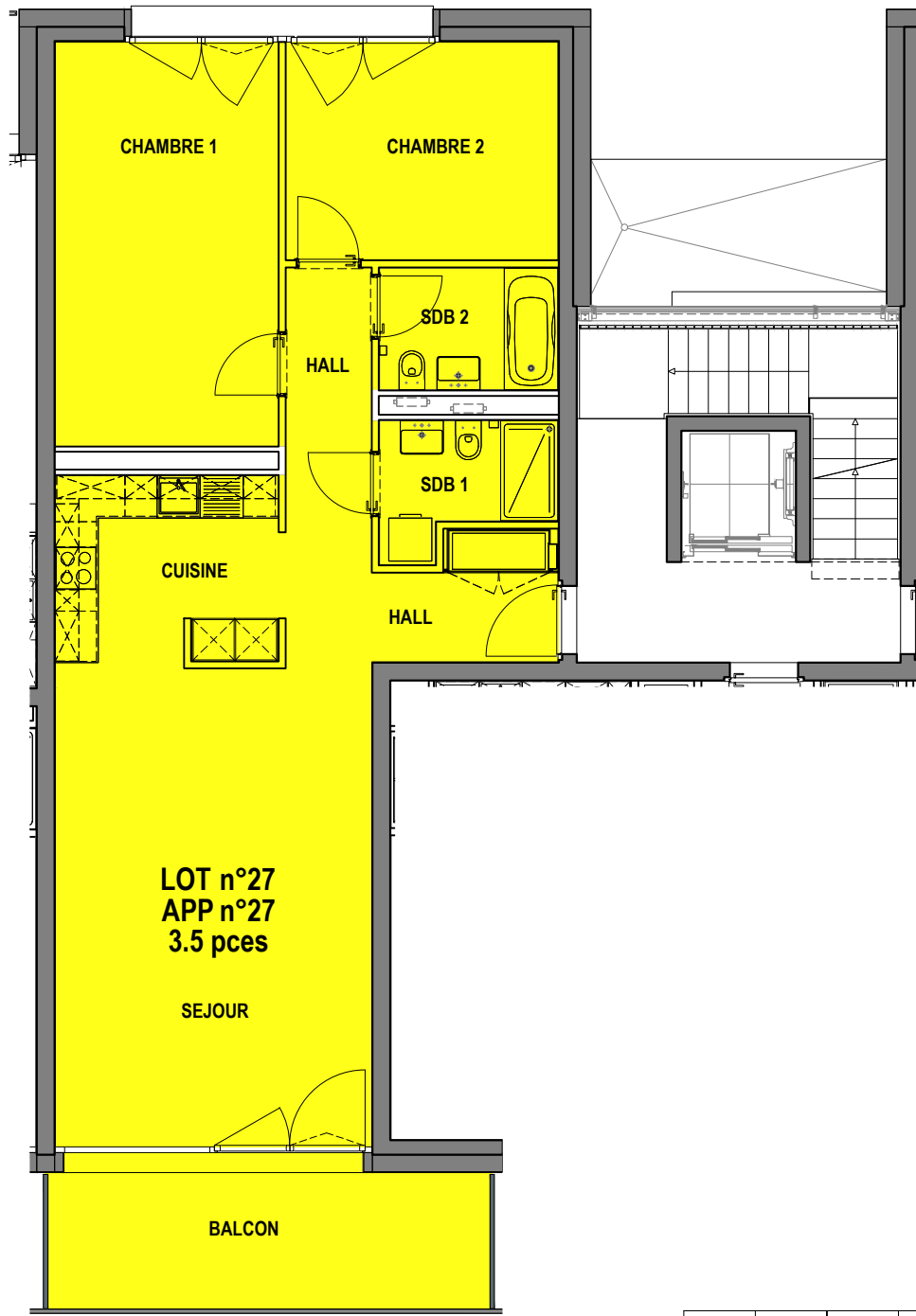
3.5 PIECES

[surface habit.uspi] 88.0 m²
 [surface balcon] 13.0 m²

CAVE 7.0 m²

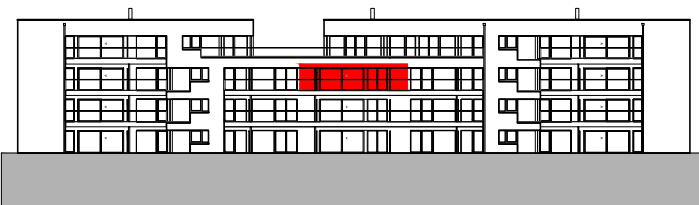
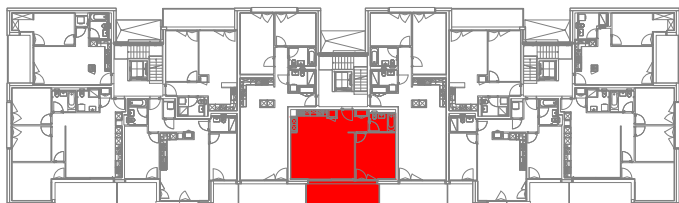
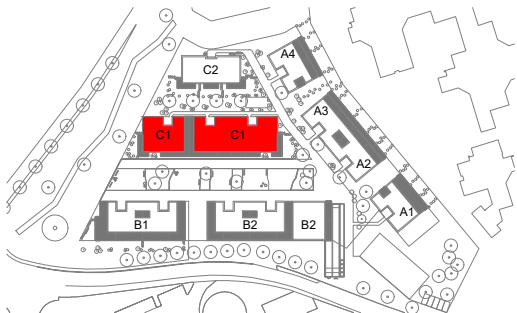
2e ETAGE

20.12.2023
PEZZOLI & ASSOCIÉS | ARCHITECTES



PLAN 1:100





La Clochette
 Mont-s/Lausanne
 PPE "BATIMENT C1"
 LOT n°28
 APP n°28

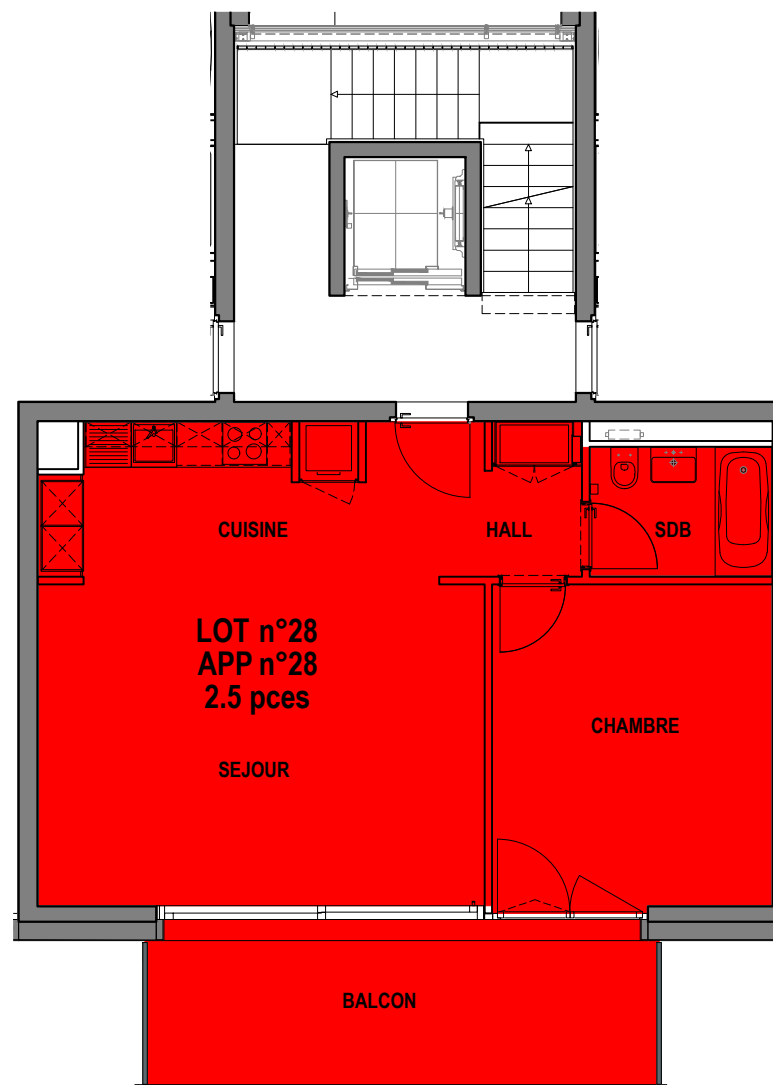
2.5 PIECES

[surface habit.uspi] 61.0 m²
 [surface balcon] 14.5 m²

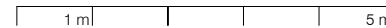
CAVE 5.5 m²

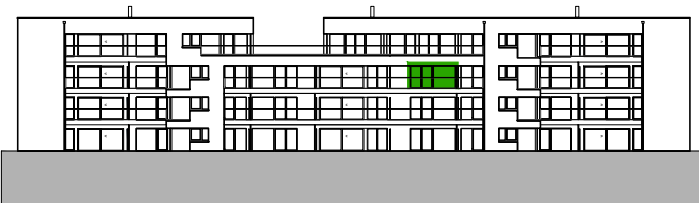
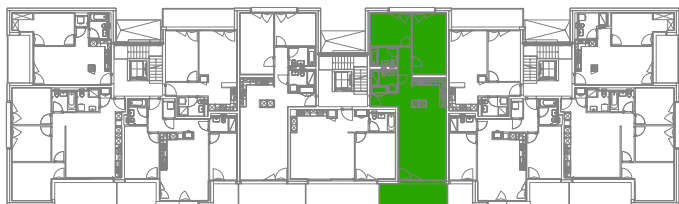
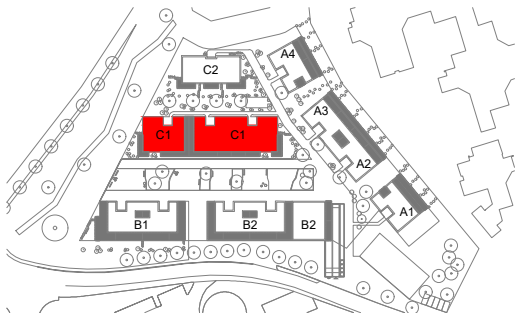
2e ETAGE

20.12.2023
 PEZZOLI & ASSOCIÉS | ARCHITECTES



PLAN 1:100





La Clochette
Mont-s/Lausanne
PPE "BATIMENT C1"
LOT n°29
APP n°29

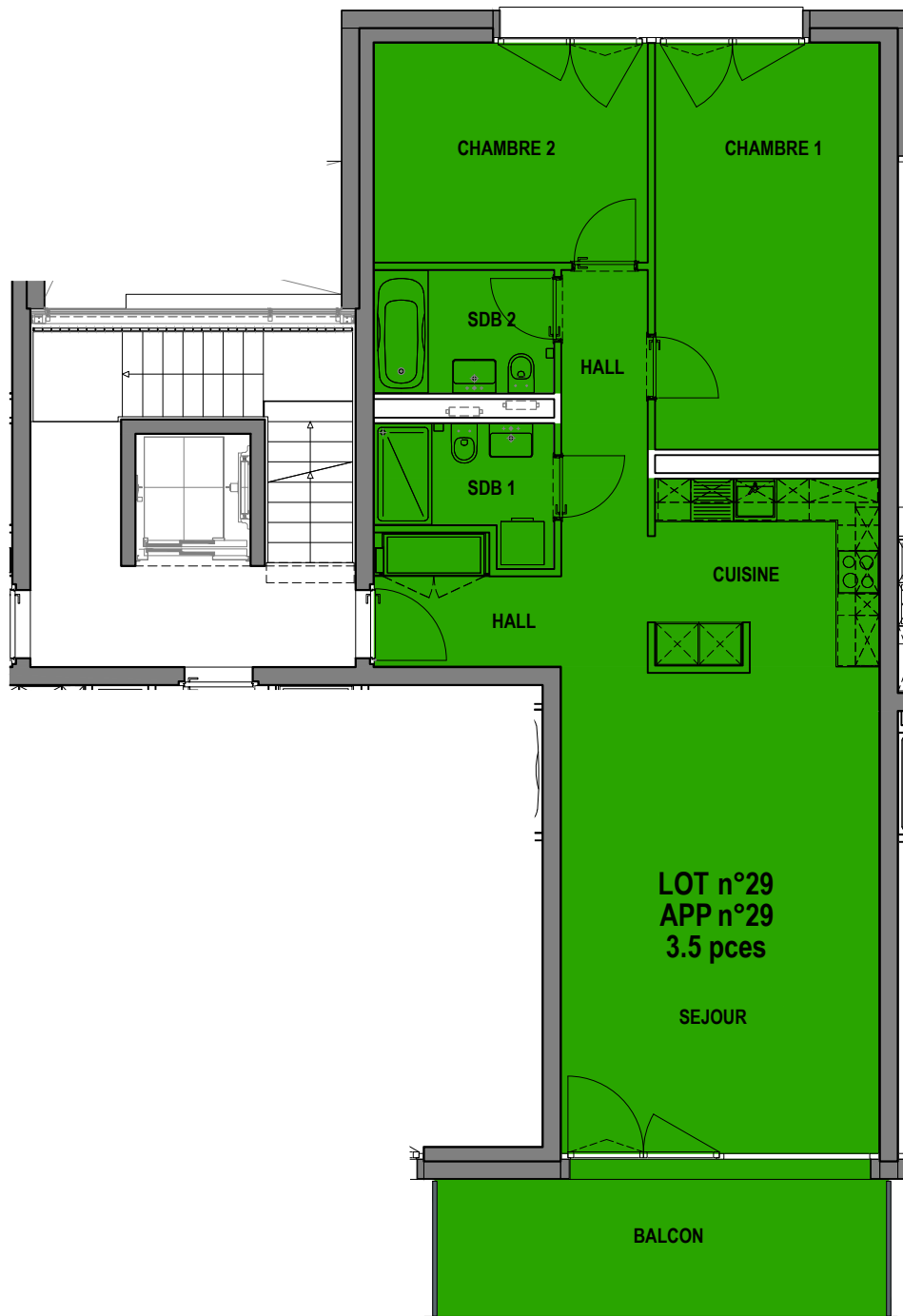
3.5 PIECES

[surface habit.uspi] 88.0 m²
 [surface balcon] 13.0 m²

CAVE 5.5 m²

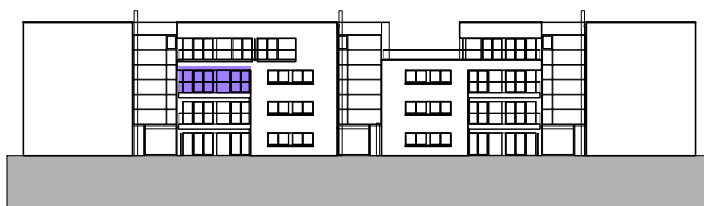
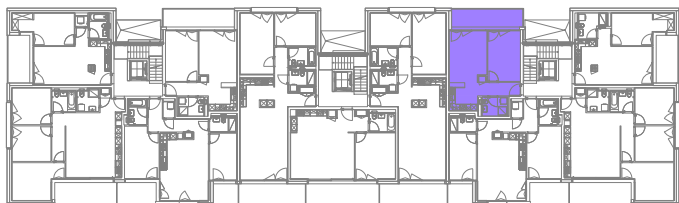
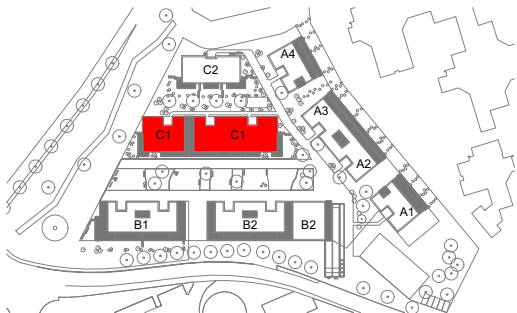
2e ETAGE

20.12.2023
 PEZZOLI & ASSOCIÉS | ARCHITECTES



PLAN 1:100 1 m 5 m





La Clochette
Mont-s/Lausanne
PPE "BATIMENT C1"
LOT n°30
APP n°30

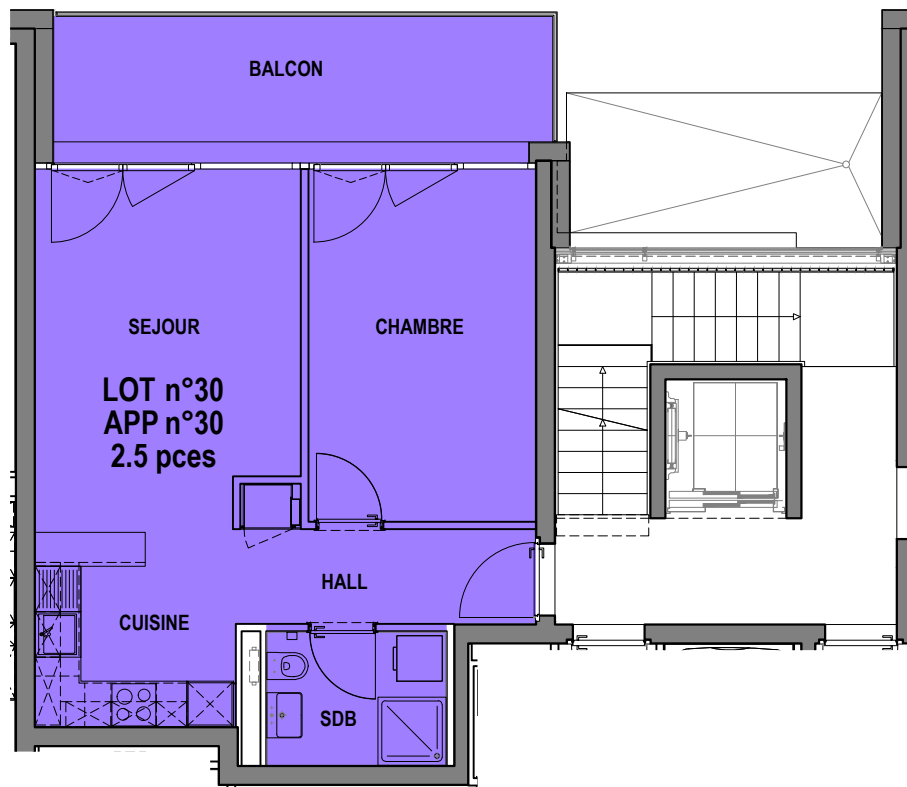
2.5 PIECES

[surface habit.uspi] 47.5 m²
 [surface balcon] 12.5 m²

CAVE 6.0 m²

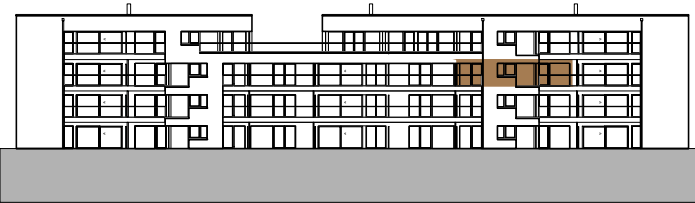
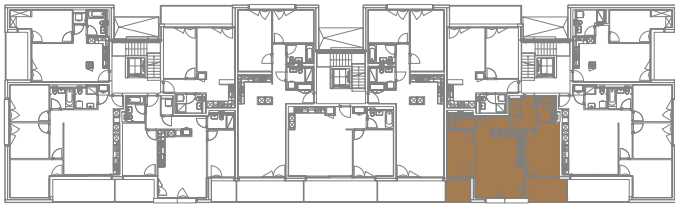
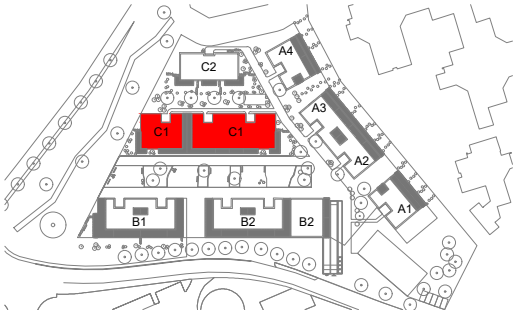
2e ETAGE

20.12.2023
 PEZZOLI & ASSOCIÉS | ARCHITECTES



PLAN 1:100





La Clochette
Mont-s/Lausanne
PPE "BATIMENT C1"
LOT n°31
APP n°31

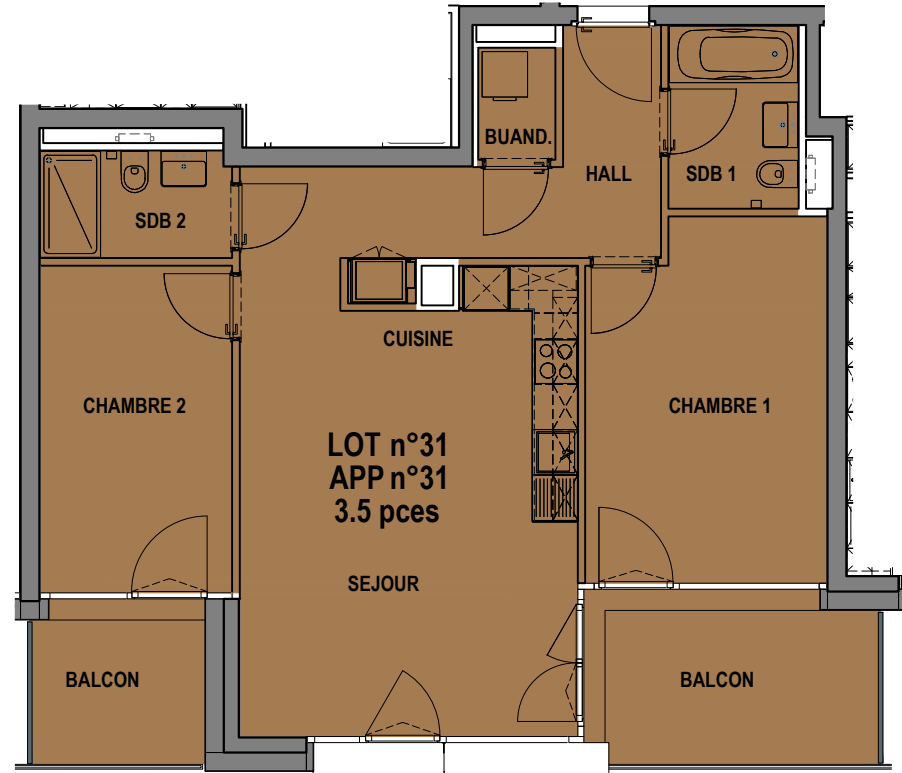
3.5 PIECES

[surface habit.uspi] 74.0 m²
 [surfaces balcons] 13.5 m²

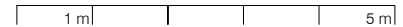
CAVE 6.0 m²

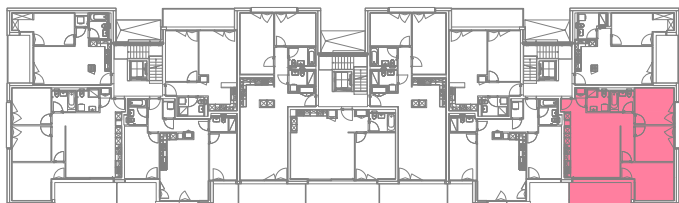
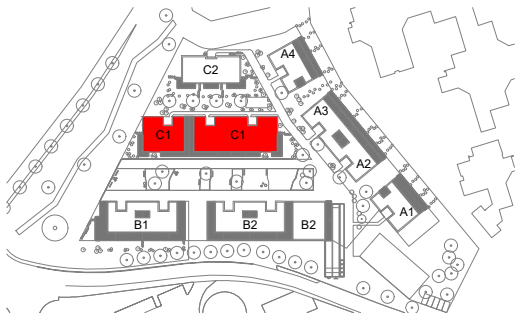
2e ETAGE

20.12.2023
 PEZZOLI & ASSOCIÉS | ARCHITECTES



PLAN 1:100





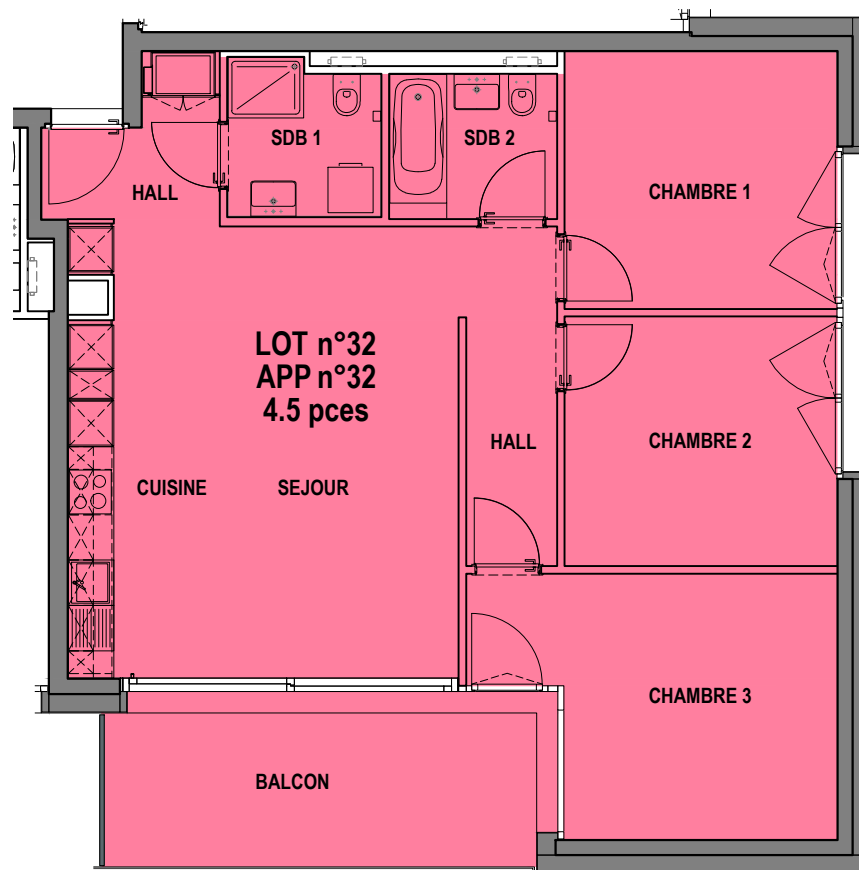
La Clochette
Mont-s/Lausanne
PPE "BATIMENT C1"
LOT n°32
APP n°32

4.5 PIECES

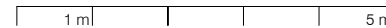
[surface habit.uspi] 90.0 m²
 [surface balcon] 13.5 m²
 CAVE 6.5 m²

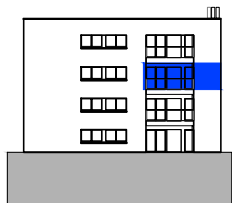
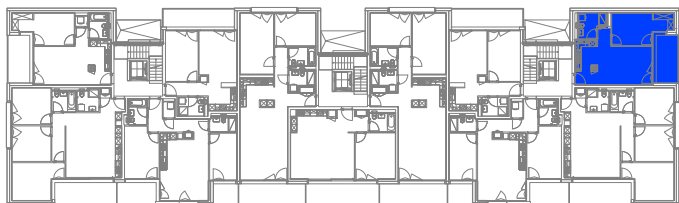
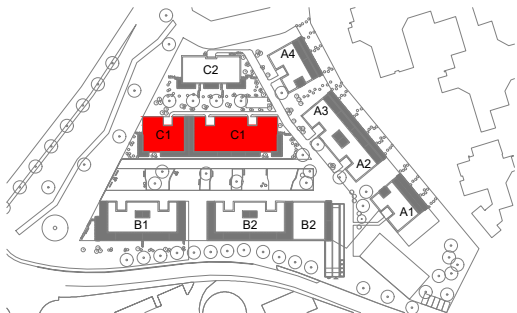
2e ETAGE

19.01.2024
 PEZZOLI & ASSOCIÉS | ARCHITECTES



PLAN 1:100





La Clochette
Mont-s/Lausanne
PPE "BATIMENT C1"
LOT n°33
APP n°33

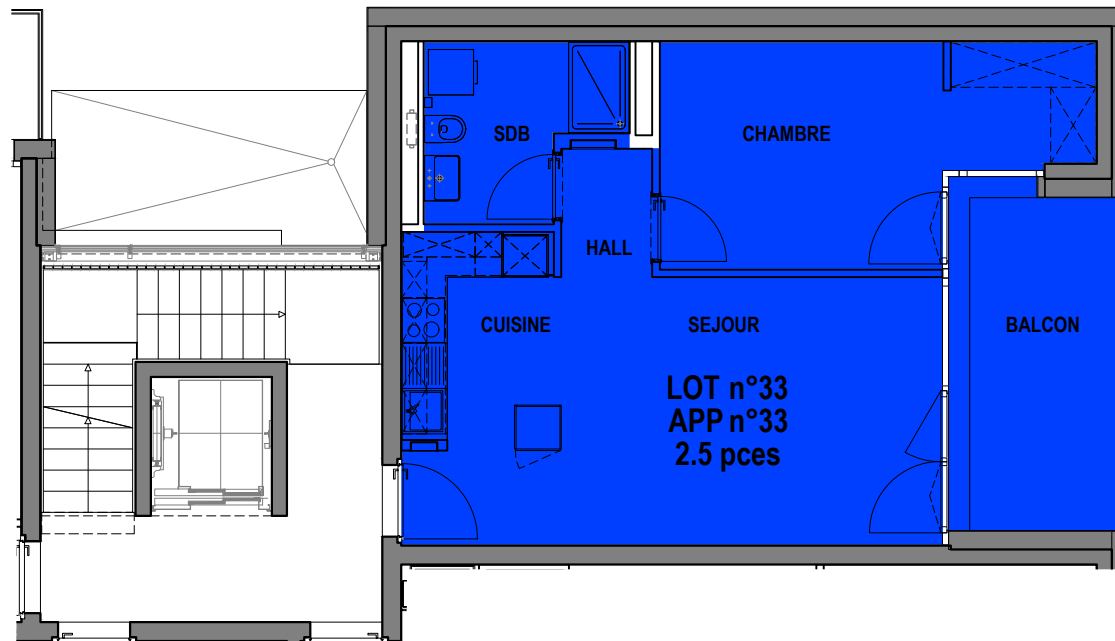
2.5 PIECES

[surface habit.uspi] 49.5 m²
 [surface balcon] 10.5 m²

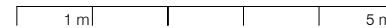
CAVE 6.0 m²

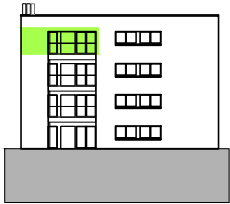
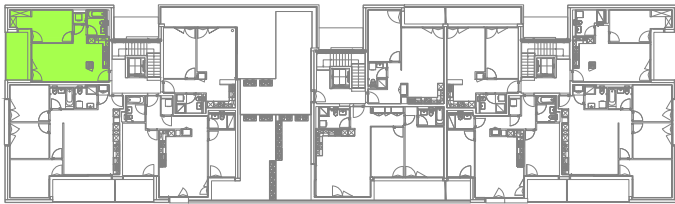
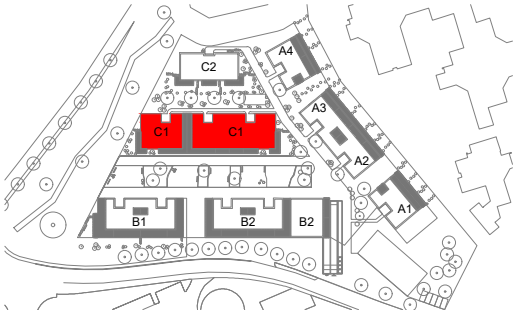
2e ETAGE

20.12.2023
 PEZZOLI & ASSOCIÉS | ARCHITECTES



PLAN 1:100





La Clochette
Mont-s/Lausanne
PPE "BATIMENT C1"
LOT n°34
APP n°34

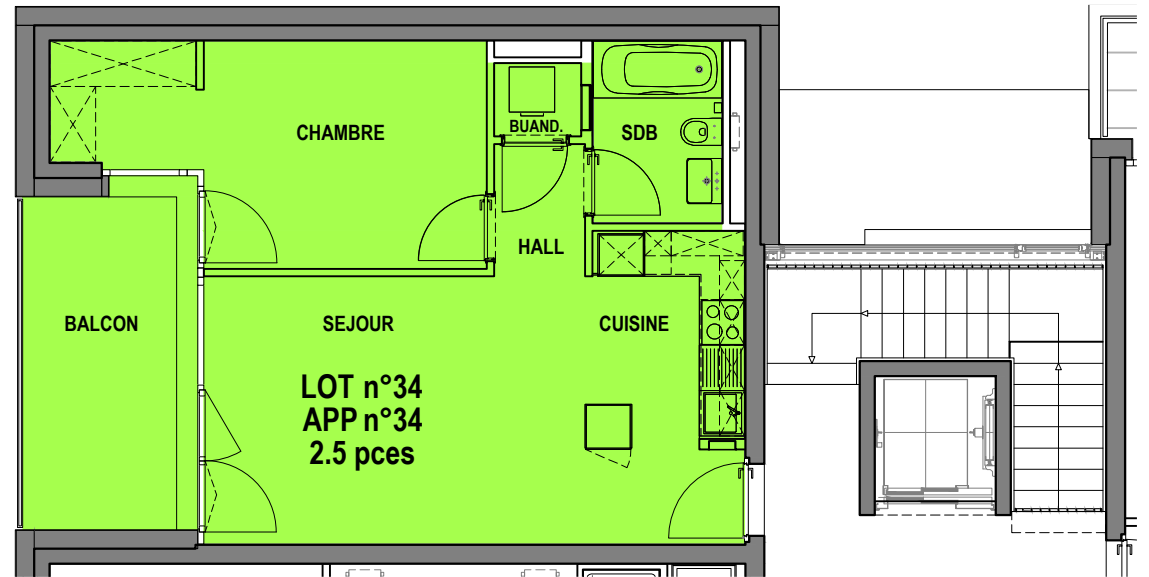
2.5 PIECES

[surface habit.uspi] 49.5 m²
 [surface balcon] 10.5 m²

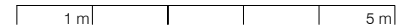
CAVE 5.5 m²

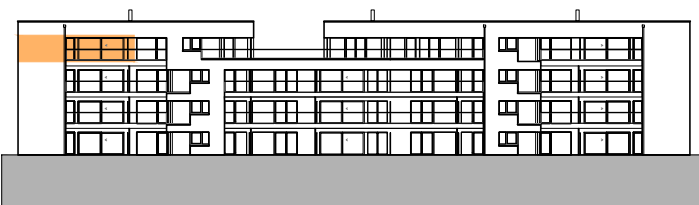
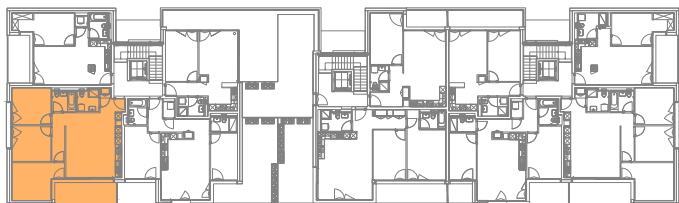
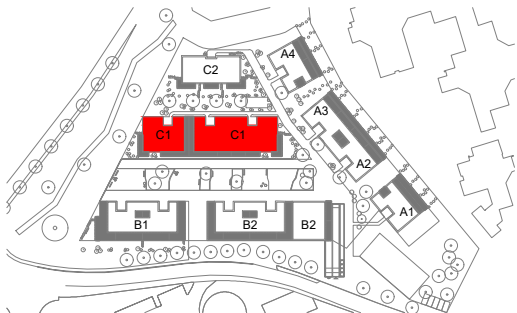
3e ETAGE

20.12.2023
 PEZZOLI & ASSOCIÉS | ARCHITECTES



PLAN 1:100





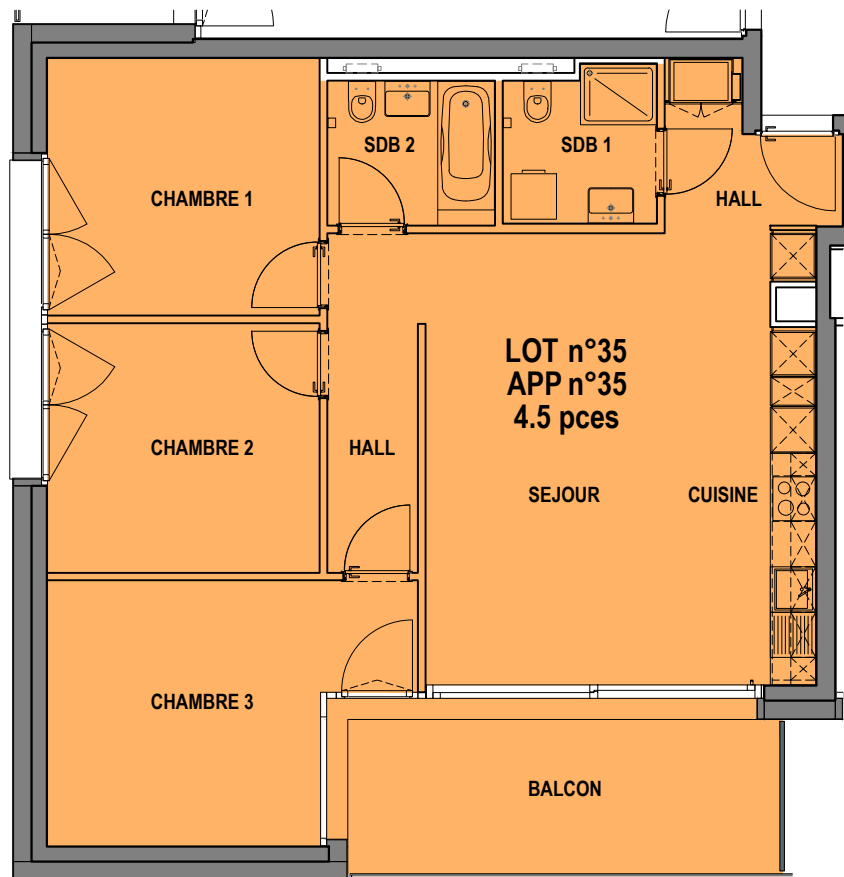
La Clochette
Mont-s/Lausanne
PPE "BATIMENT C1"
LOT n°35
APP n°35

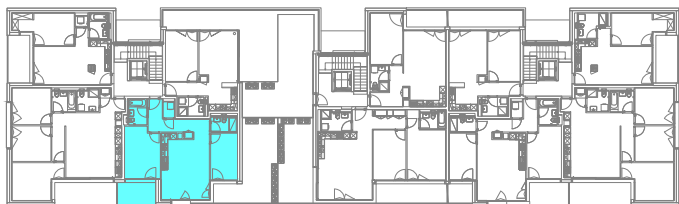
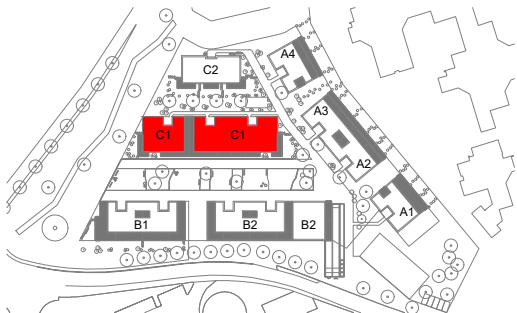
4.5 PIECES

[surface habit.uspi] 90.0 m²
 [surface balcon] 13.5 m²

CAVE 11.0 m²

3e ETAGE



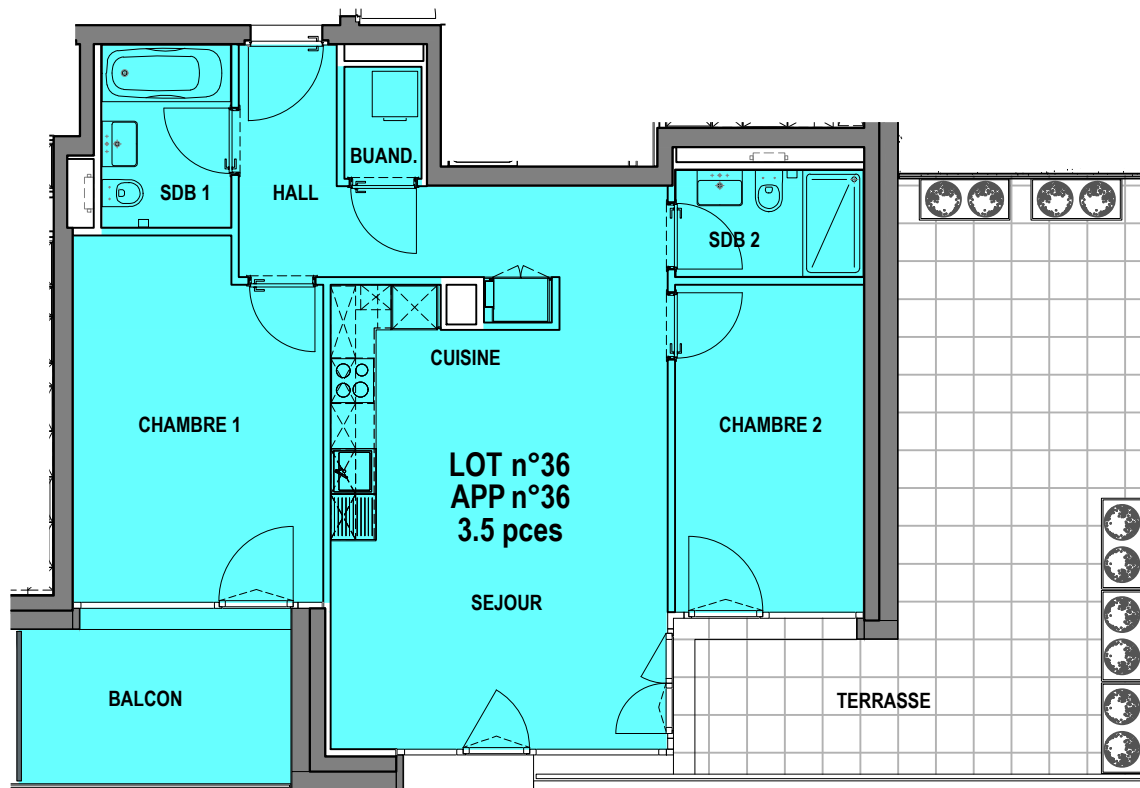


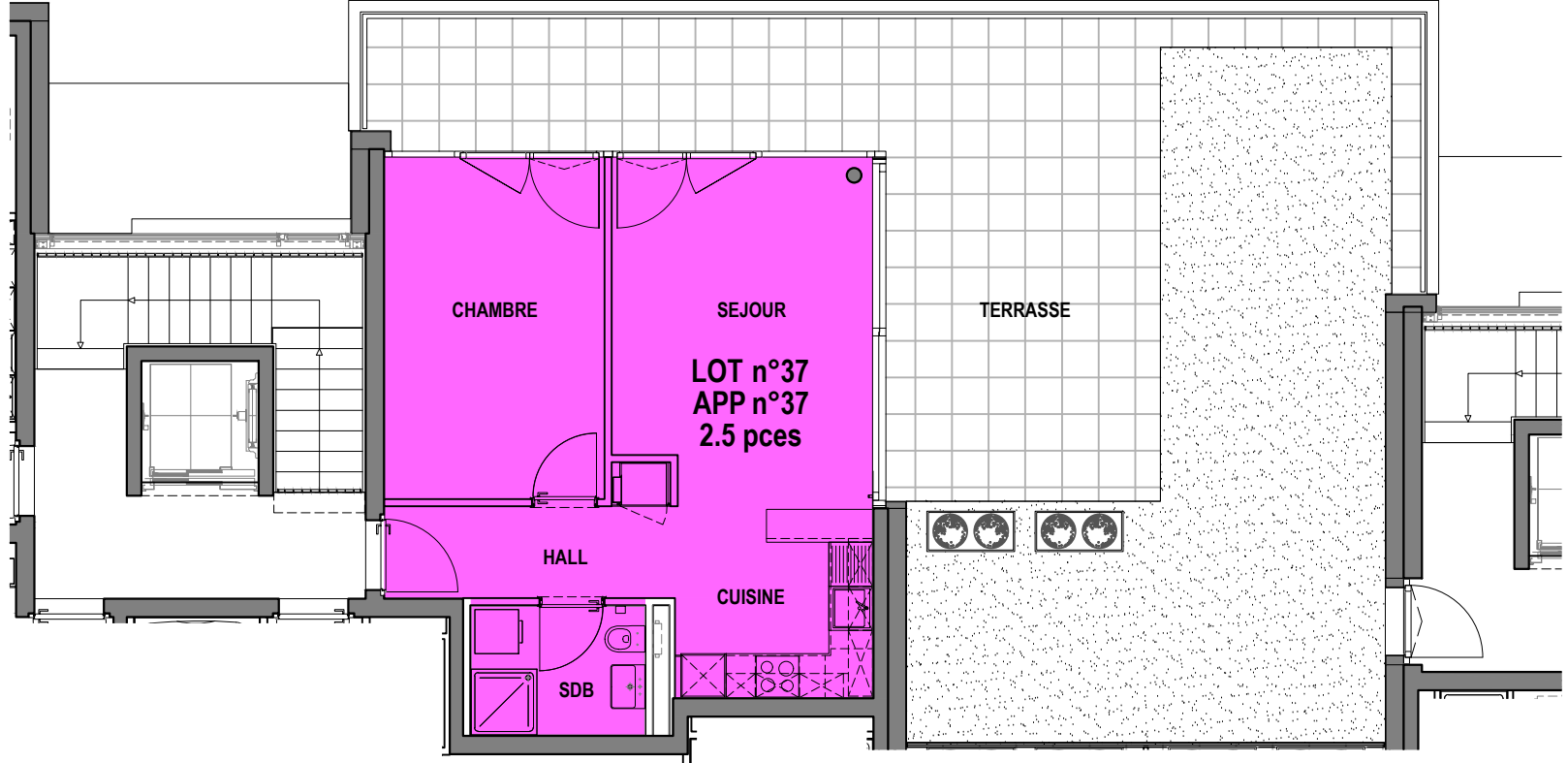
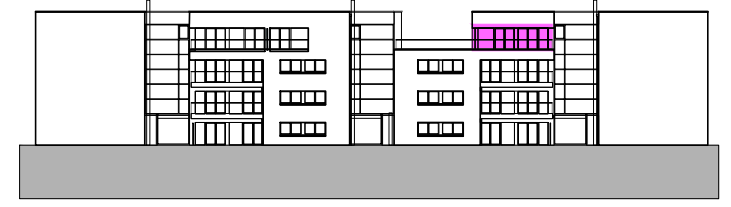
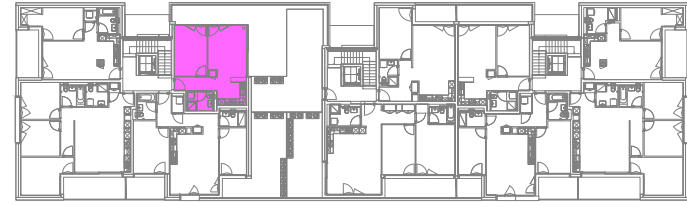
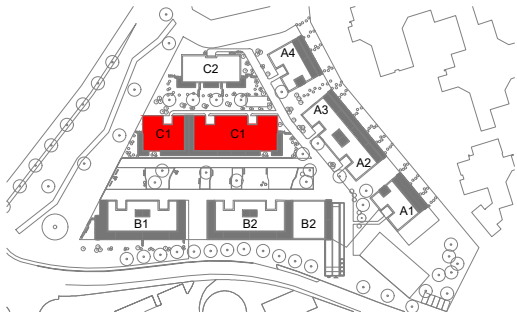
La Clochette
Mont-s/Lausanne
PPE "BATIMENT C1"
LOT n°36
APP n°36

3.5 PIECES

[surface habit.uspi]	74.0 m ²
[surface balcon]	9.0 m ²
[surface terrasse]	31.5 m ²
CAVE	5.5 m ²

3e ETAGE

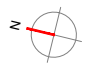


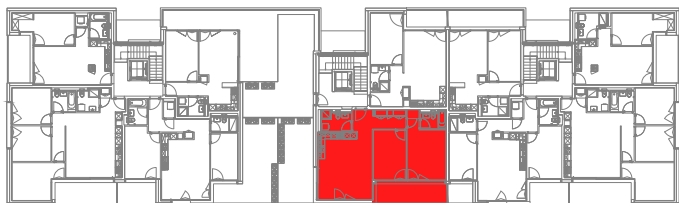
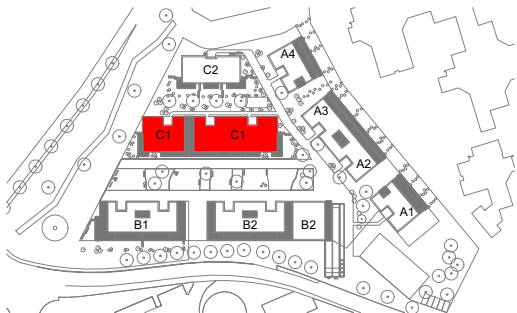


La Clochette
Mont-s/Lausanne
PPE "BATIMENT C1"
LOT n°37
APP n°37

2.5 PIECES
 [surface habit.uspi] 48.0 m²
 [surface terrasse] 37.5 m²
 CAVE 5.5 m²

3e ETAGE



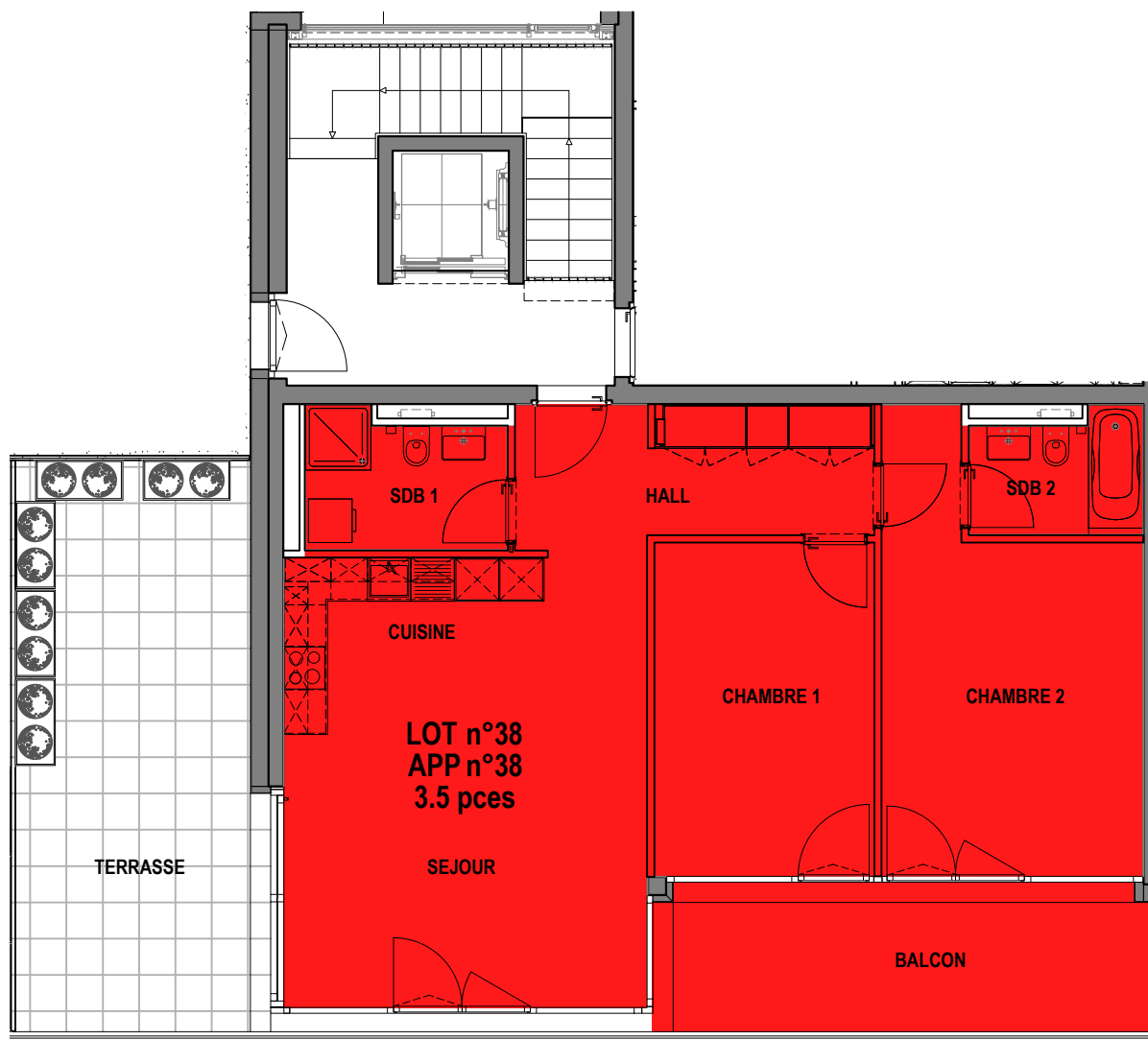


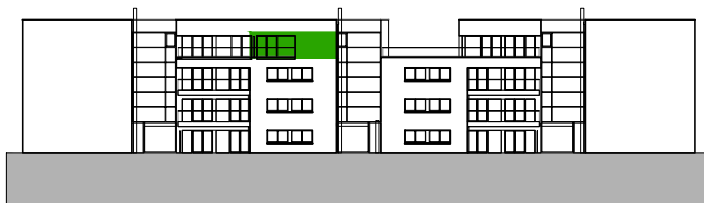
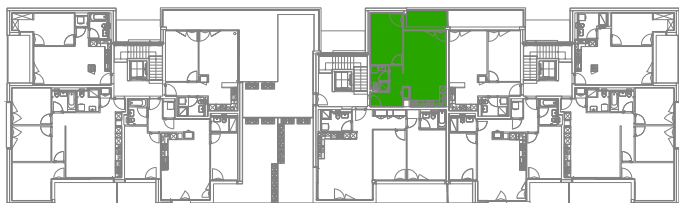
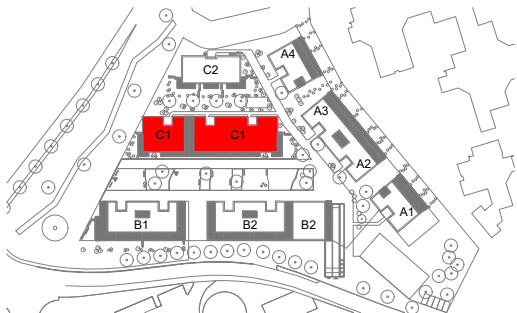
La Clochette
Mont-s/Lausanne
PPE "BATIMENT C1"
LOT n°38
APP n°38

3.5 PIECES

[surface habit.uspi]	84.5 m ²
[surface balcon]	14.0 m ²
[surface terrasse]	26.5 m ²
CAVE	8.0 m ²

3e ETAGE





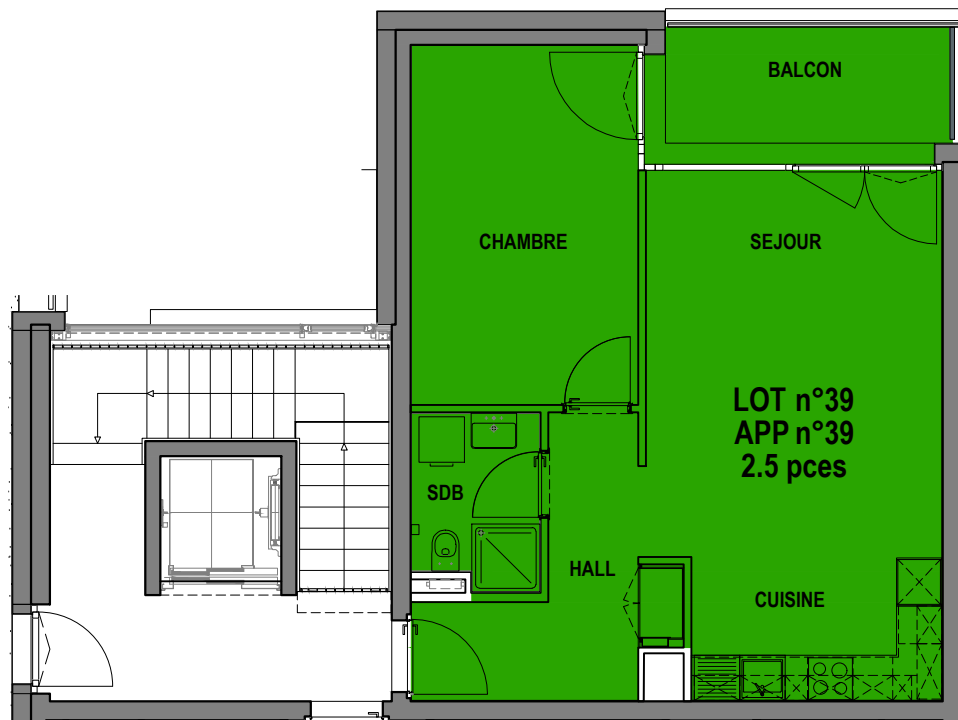
La Clochette
Mont-s/Lausanne
PPE "BATIMENT C1"
LOT n°39
APP n°39

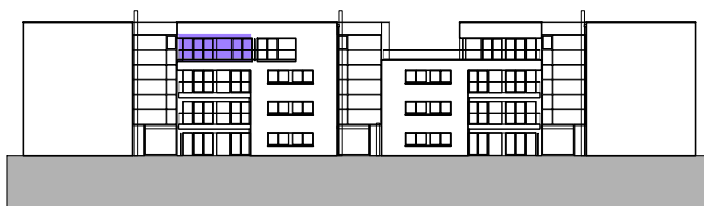
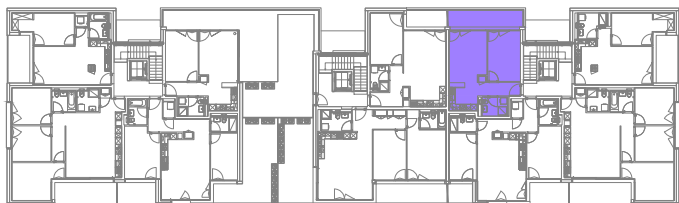
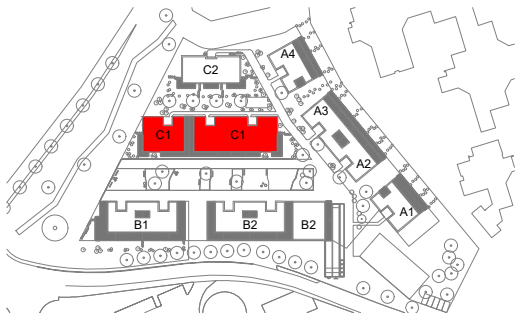
2.5 PIECES

[surface habit.uspi] 53.0 m²
 [surface balcon] 7.5 m²

CAVE 8.0 m²

3e ETAGE





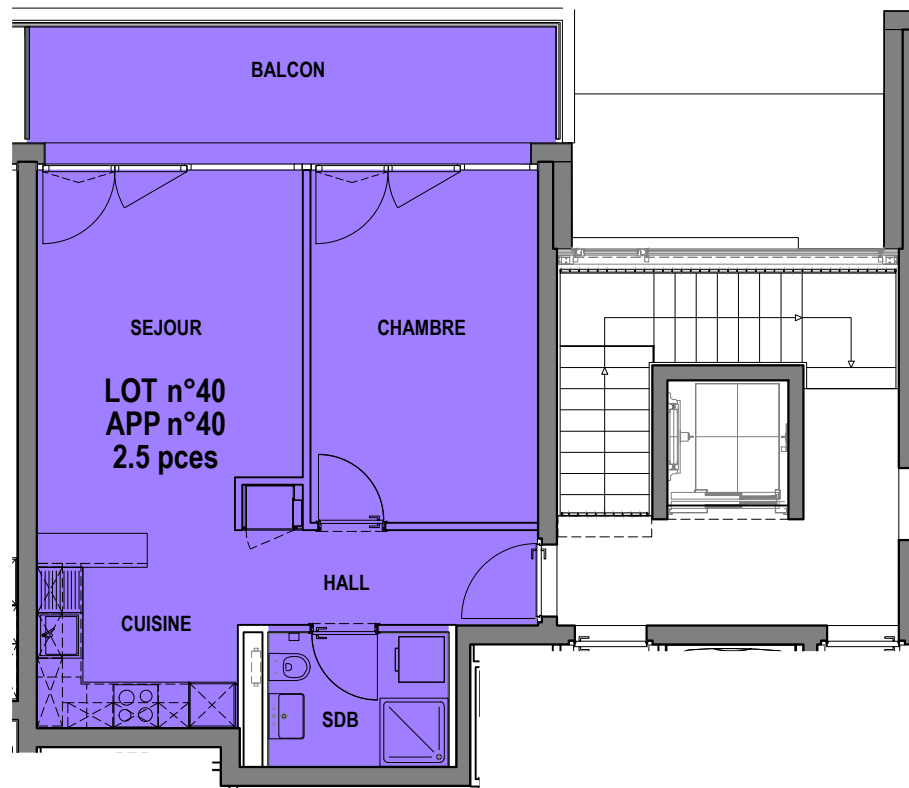
La Clochette
Mont-s/Lausanne
PPE "BATIMENT C1"
LOT n°40
APP n°40

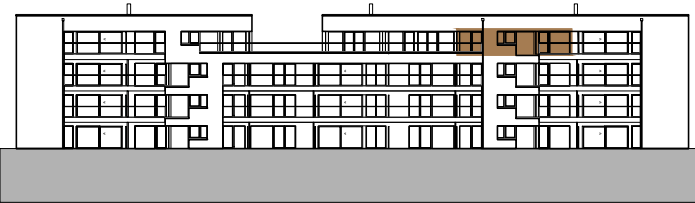
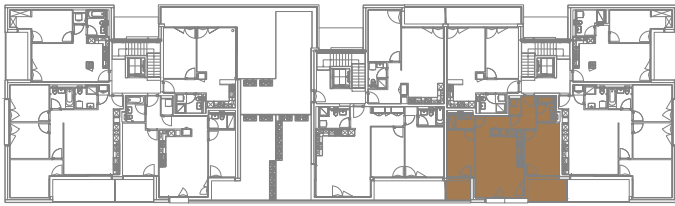
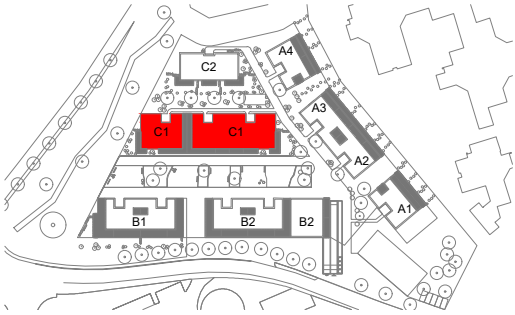
2.5 PIECES

[surface habit.uspi] 47.5 m²
 [surface balcon] 13.0 m²

CAVE 6.5 m²

3e ETAGE





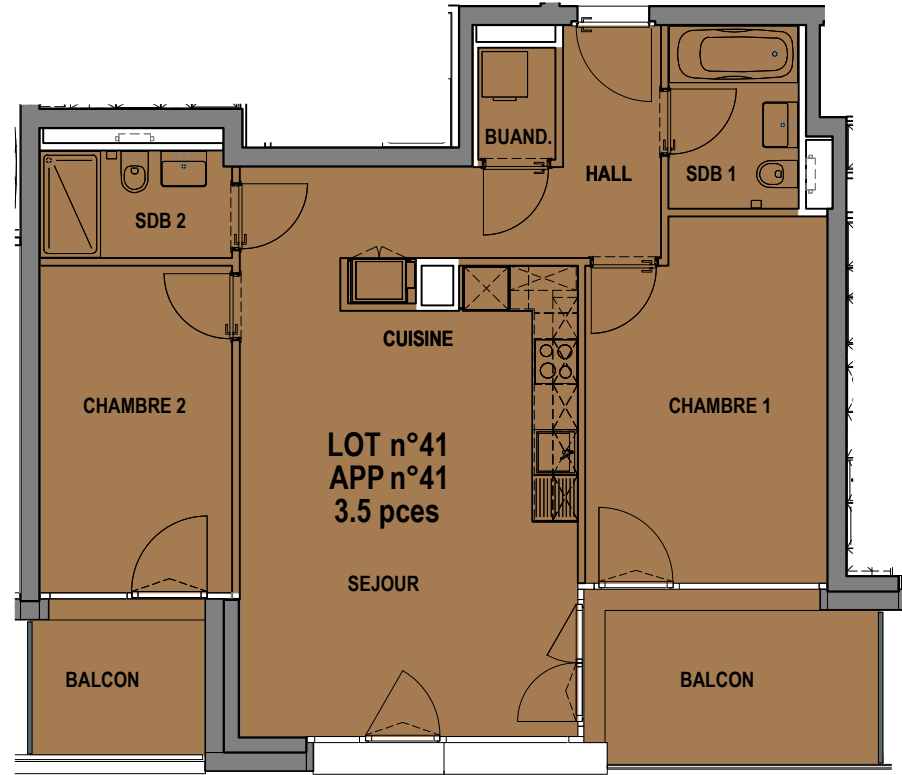
La Clochette
Mont-s/Lausanne
PPE "BATIMENT C1"
LOT n°41
APP n°41

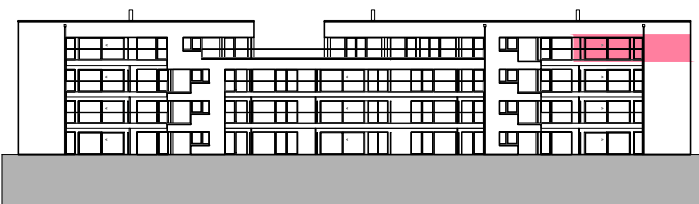
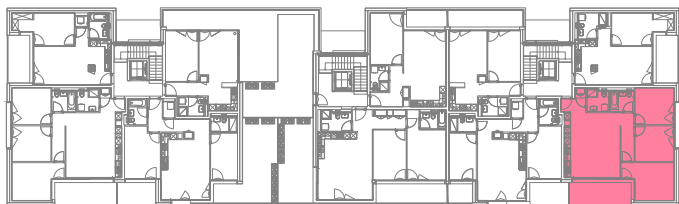
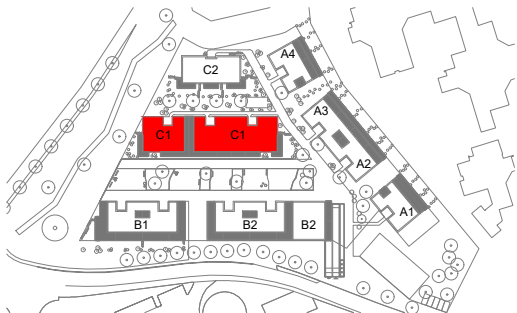
3.5 PIECES

[surface habit.uspi] 74.0 m²
 [surfaces balcons] 13.5 m²

CAVE 6.5 m²

3e ETAGE





La Clochette
Mont-s/Lausanne
PPE "BATIMENT C1"
LOT n°42
APP n°42

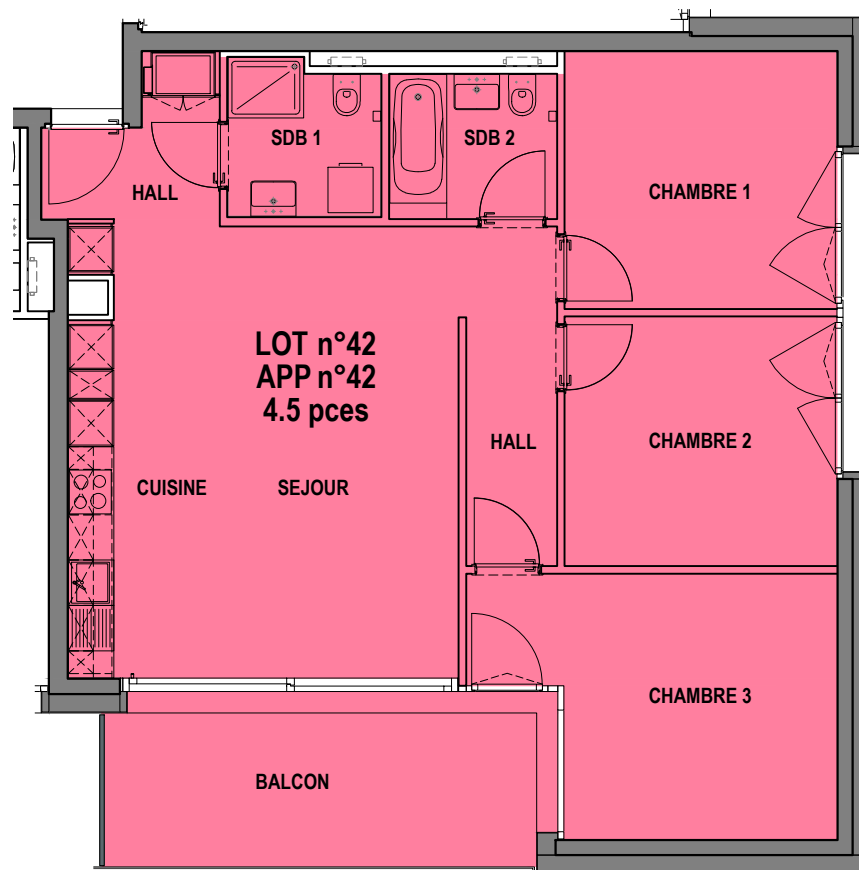
4.5 PIECES

[surface habit.uspi] 89.5 m²
 [surface balcon] 13.5 m²

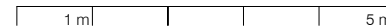
CAVE 6.5 m²

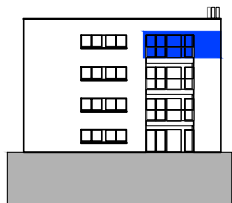
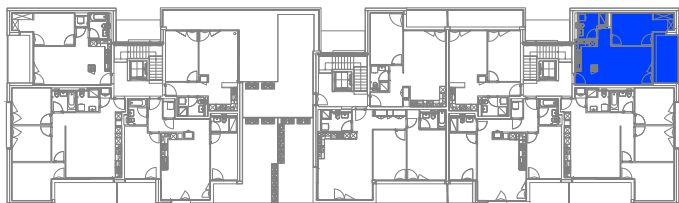
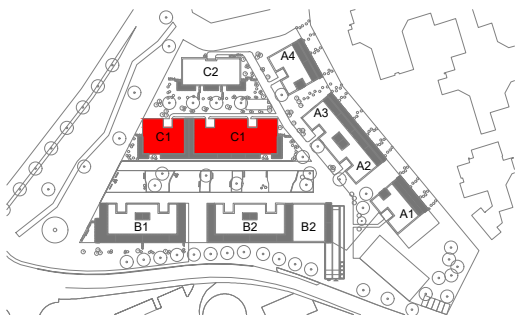
3e ETAGE

20.12.2023
 PEZZOLI & ASSOCIÉS | ARCHITECTES



PLAN 1:100





La Clochette
Mont-s/Lausanne
PPE "BATIMENT C1"
LOT n°43
APP n°43

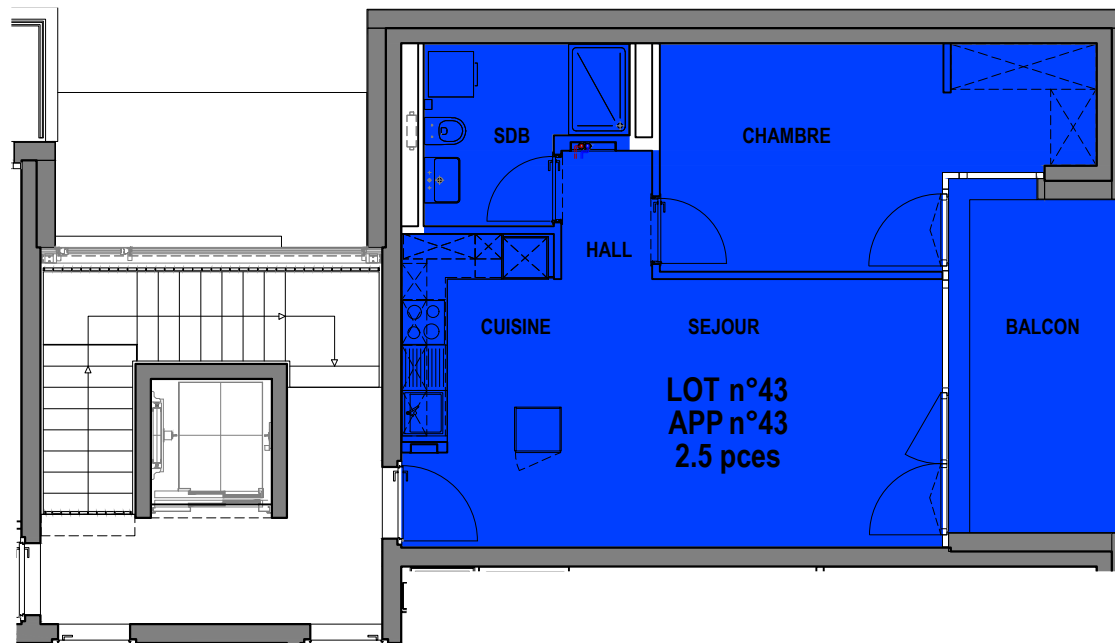
2.5 PIECES

[surface habit.uspi] 49.5 m²
 [surface balcon] 10.5 m²

CAVE 7.0 m²

3e ETAGE

20.12.2023
 PEZZOLI & ASSOCIÉS | ARCHITECTES



PLAN 1:100

