

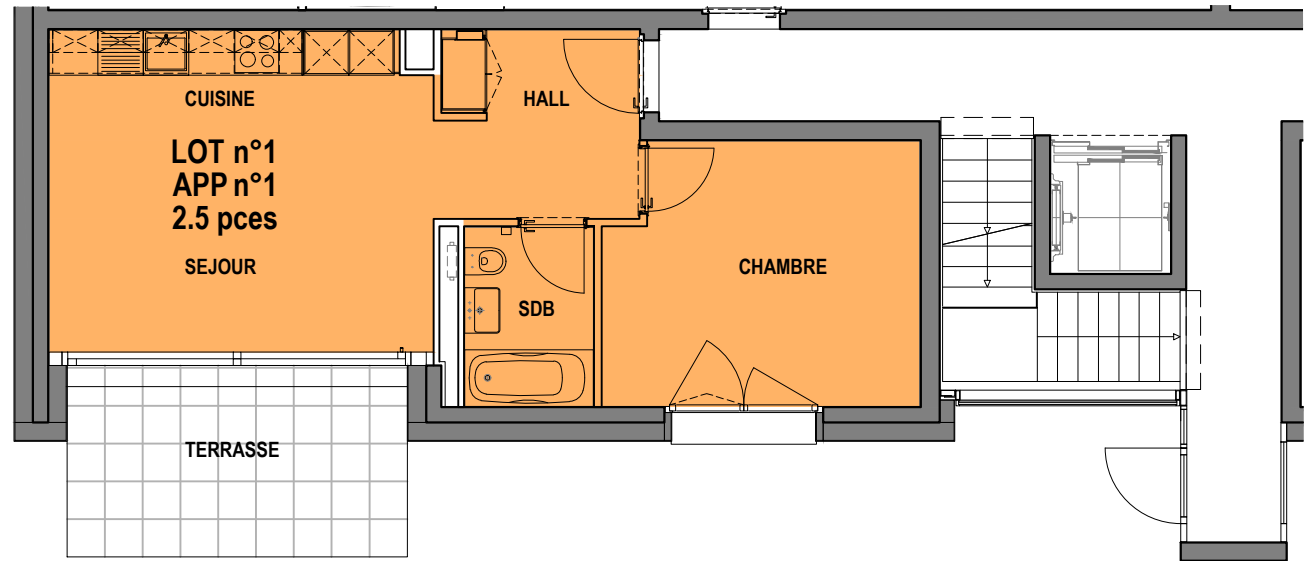
La Clochette
Mont-s/Lausanne
PPE "BATIMENT C2"
LOT n°1
APP n°1

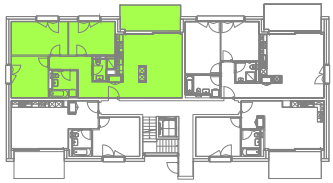
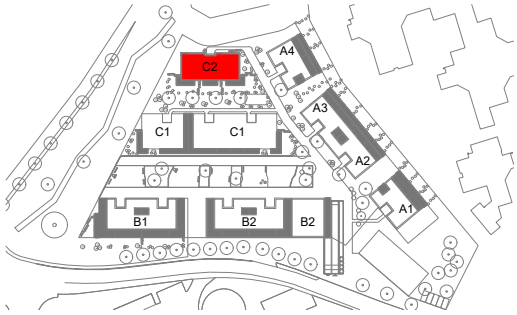
2.5 PIECES

[surface habit.uspi] 46.5 m²
 [surface terrasse] 11.0 m²

CAVE 6.0 m²

REZ-DE-CHAUSSÉE





La Clochette
Mont-s/Lausanne
PPE "BATIMENT C2"
LOT n°2
APP n°2

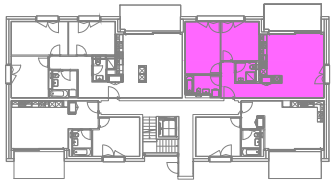
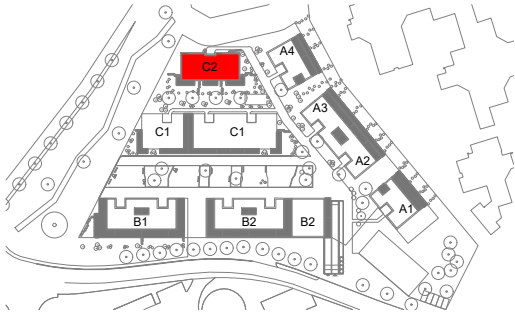
4.5 PIECES

[surface habit.uspi] 96.5 m²
 [surface balcon] 13.0 m²

CAVE 6.5 m²

REZ-DE-CHAUSSÉE





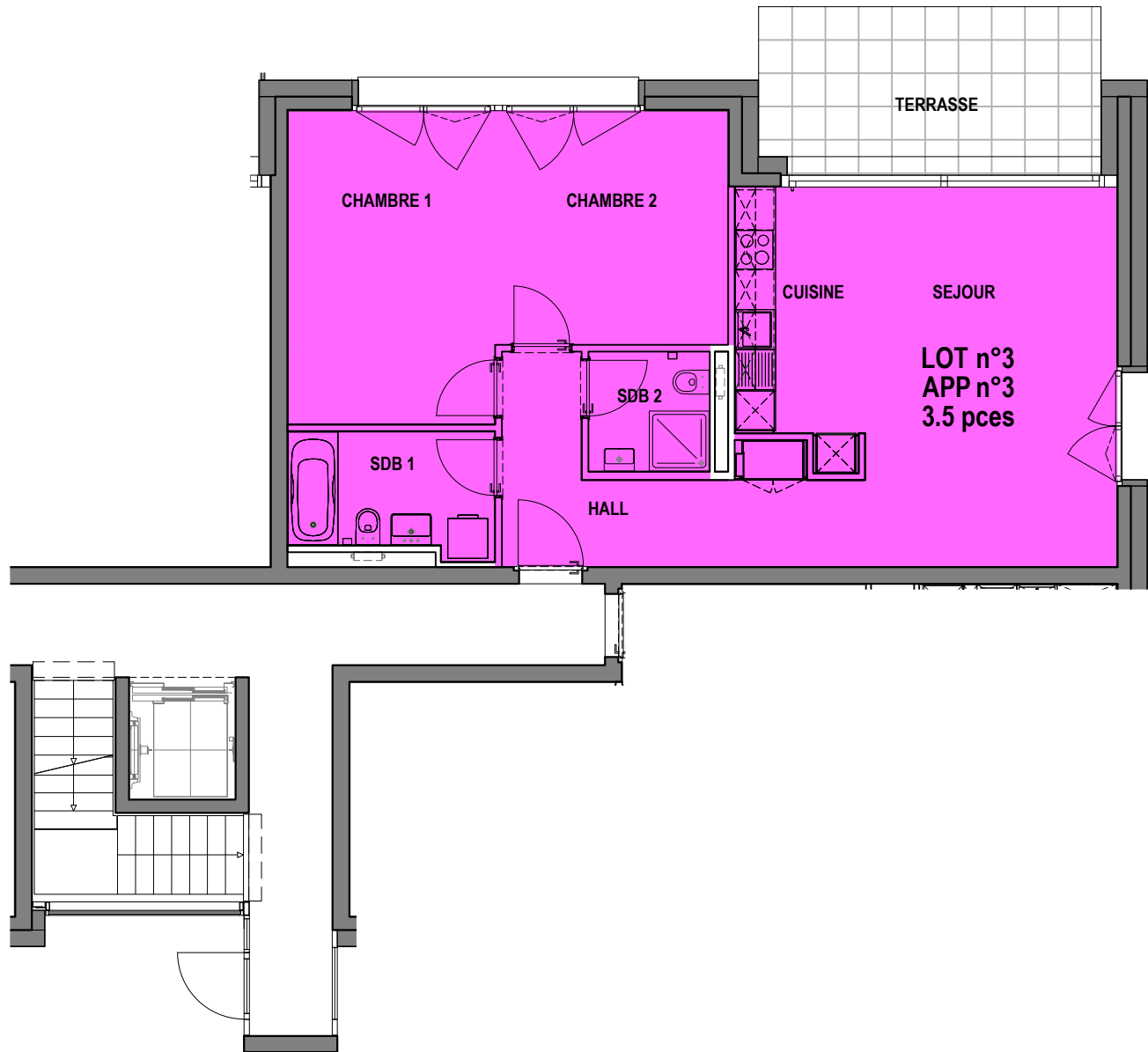
La Clochette
Mont-s/Lausanne
PPE "BATIMENT C2"
LOT n°3
APP n°3

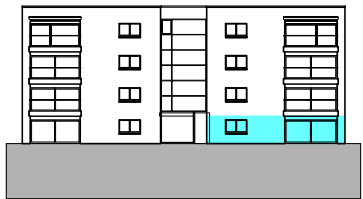
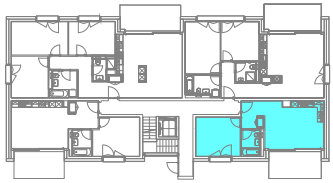
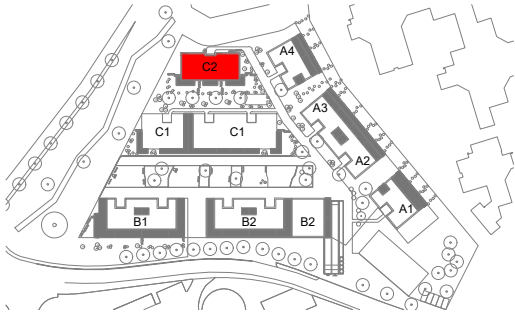
3.5 PIECES

[surface habit.uspi] 77.0 m²
 [surface terrasse] 12.5 m²

CAVE 6.5 m²

REZ-DE-CHAUSSÉE





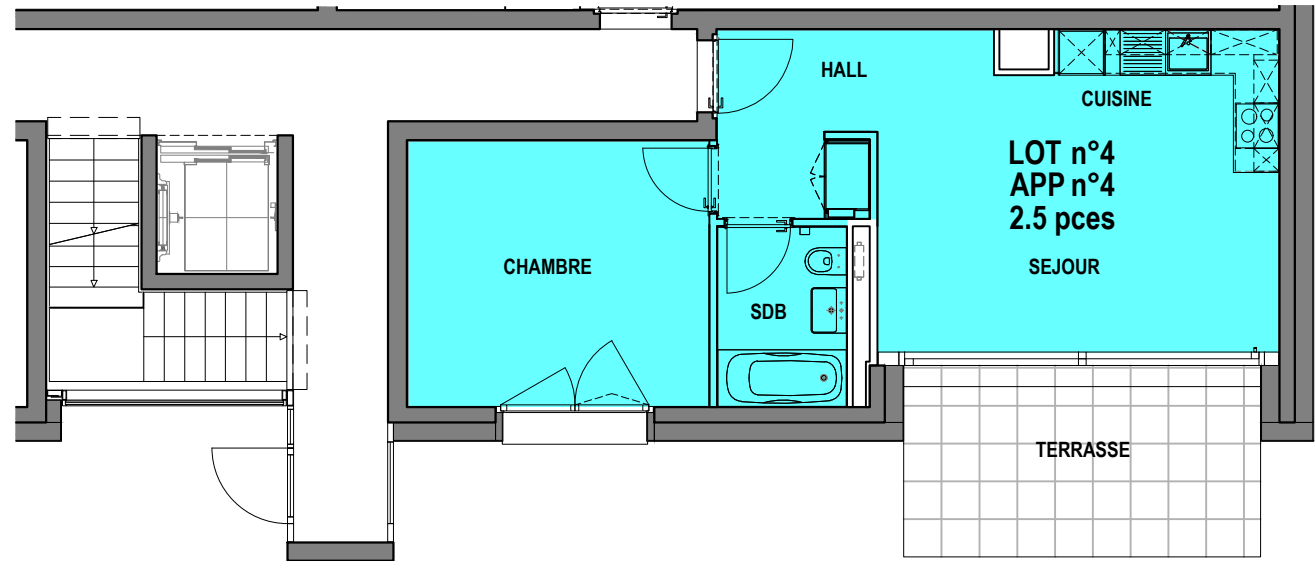
La Clochette
Mont-s/Lausanne
PPE "BATIMENT C2"
LOT n°4
APP n°4

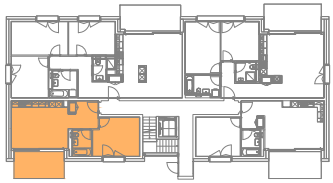
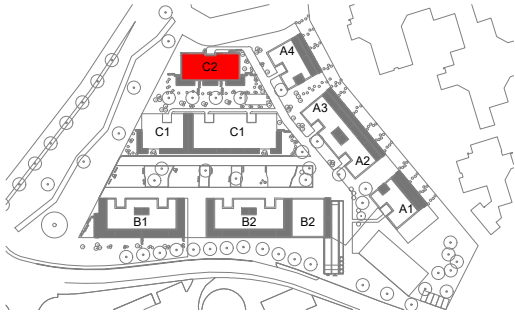
2.5 PIECES

[surface habit.uspi] 46.0 m²
 [surface terrasse] 11.5 m²

CAVE 5.5 m²

REZ-DE-CHAUSSÉE





La Clochette
Mont-s/Lausanne
PPE "BATIMENT C2"
LOT n°5
APP n°5

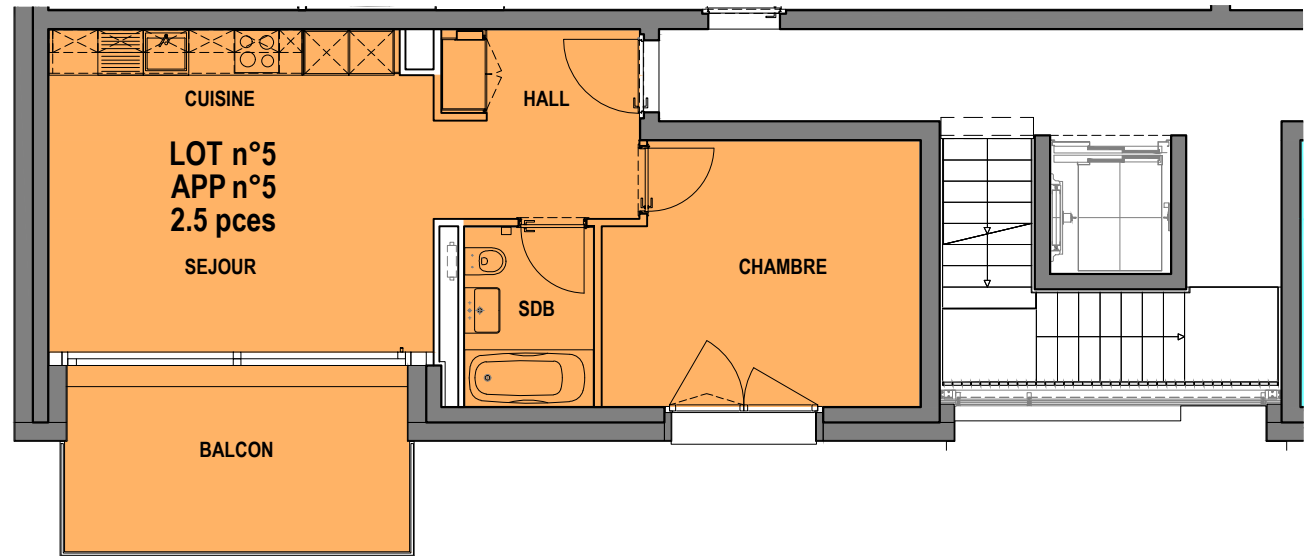
2.5 PIECES

[surface habit.uspi] 46.5 m²
 [surface balcon] 11.0 m²

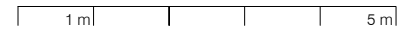
CAVE 5.0 m²

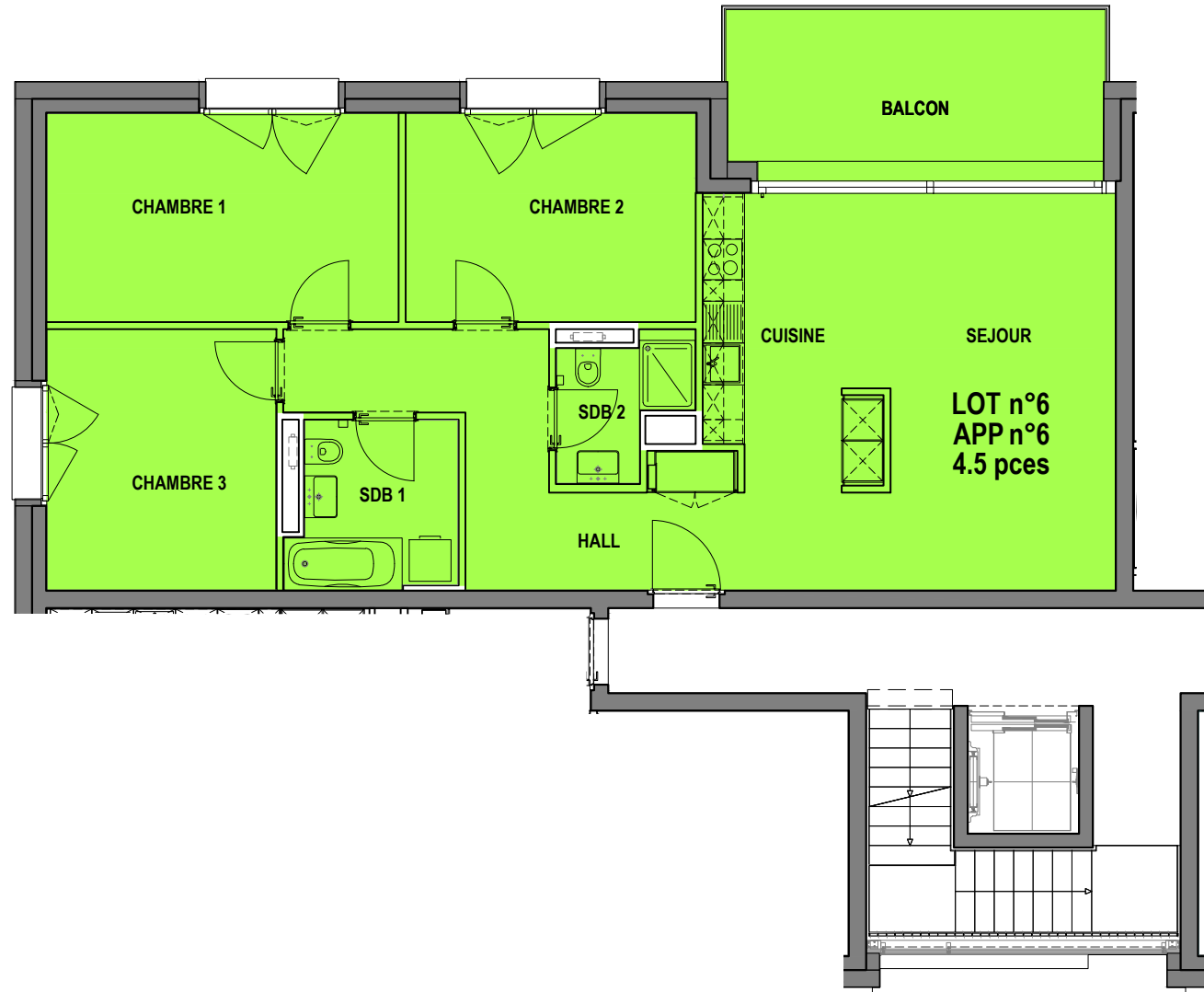
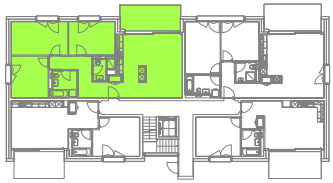
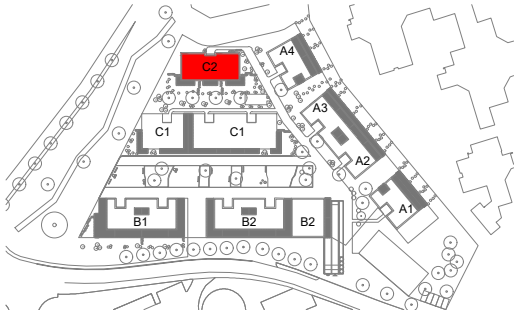
1er ETAGE

20.12.2023
 PEZZOLI & ASSOCIÉS | ARCHITECTES



PLAN 1:100





La Clochette
Mont-s/Lausanne
PPE "BATIMENT C2"
LOT n°6
APP n°6

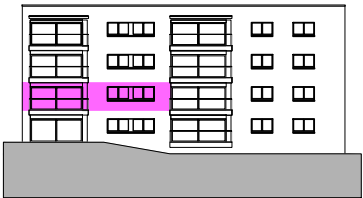
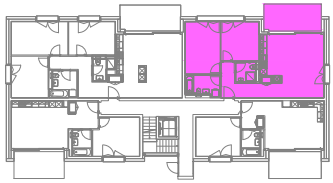
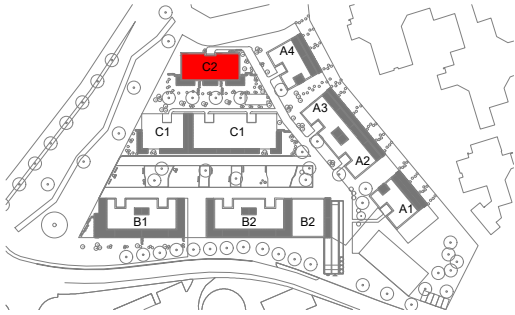
4.5 PIECES

[surface habit.uspi] 96.5 m²
 [surface balcon] 13.0 m²

CAVE 6.0 m²

1er ETAGE





La Clochette
Mont-s/Lausanne
PPE "BATIMENT C2"
LOT n°7
APP n°7

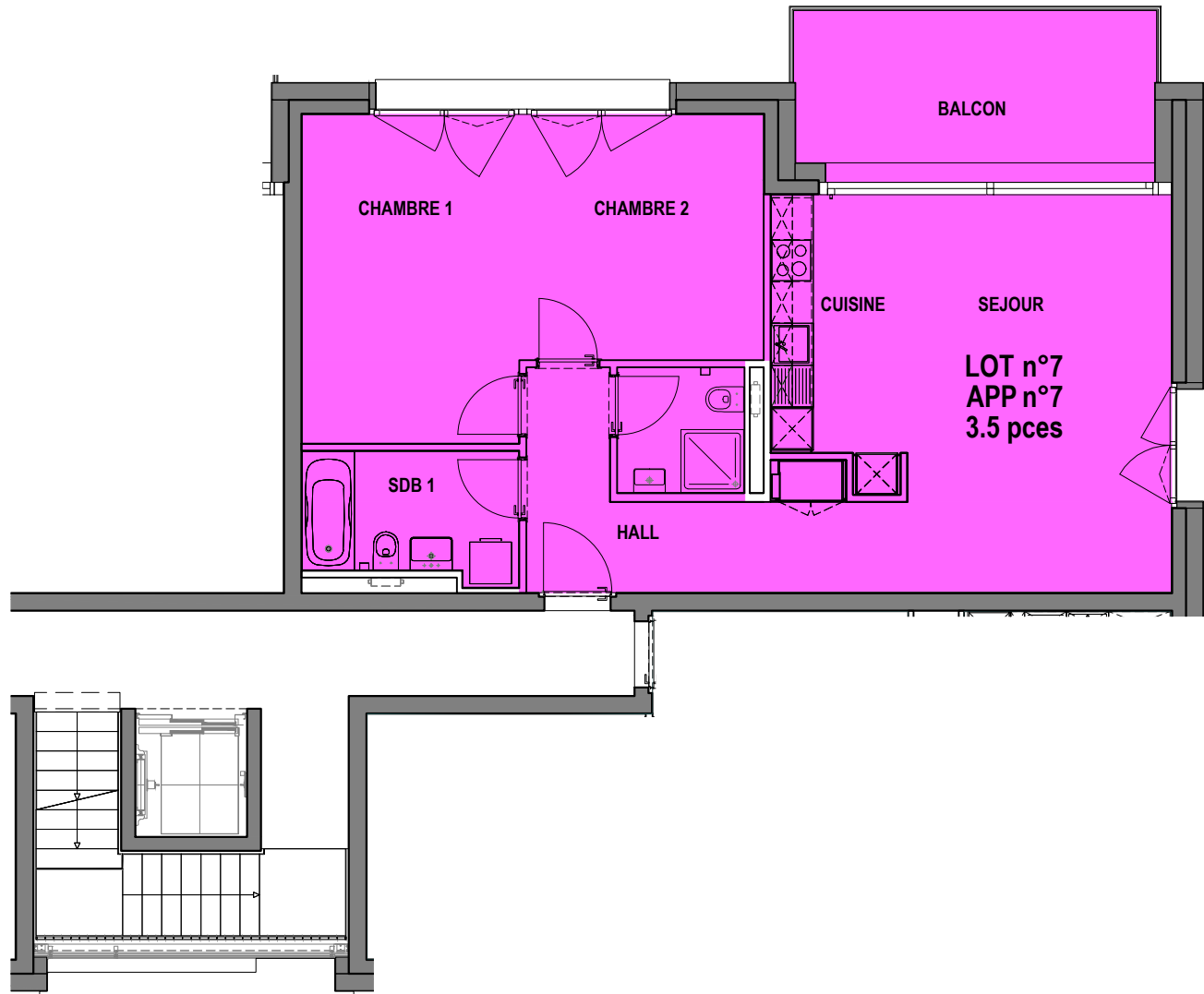
3.5 PIECES

[surface habit.uspi] 77.0 m²
 [surface balcon] 12.0 m²

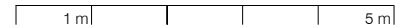
CAVE 5.5 m²

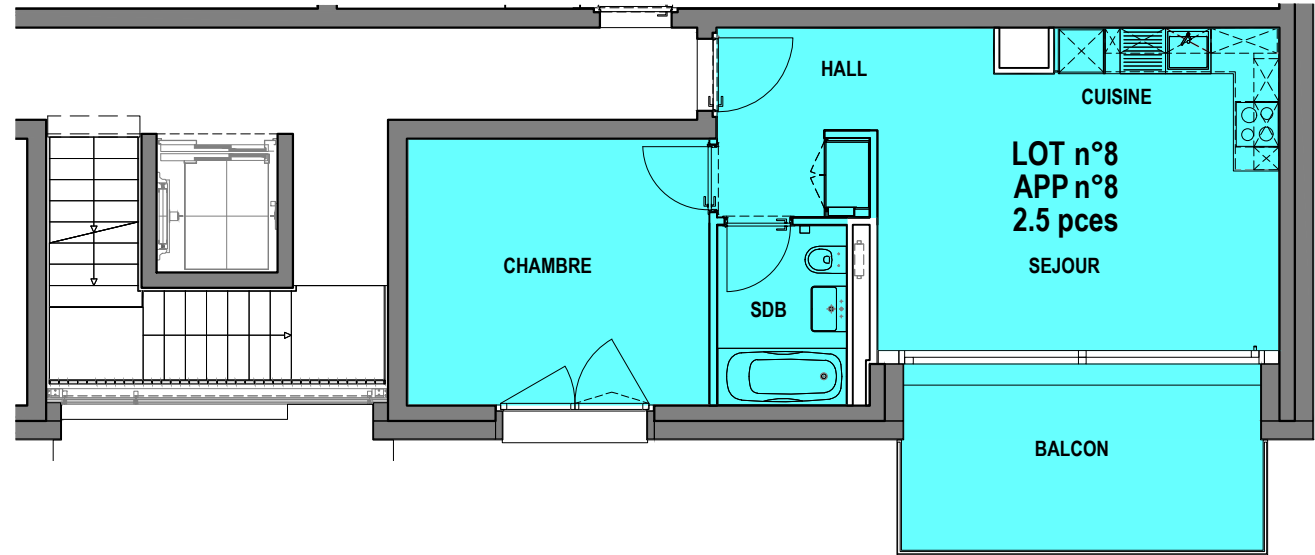
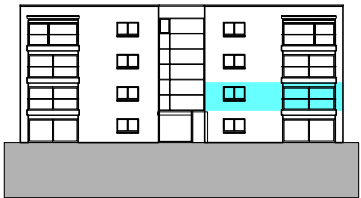
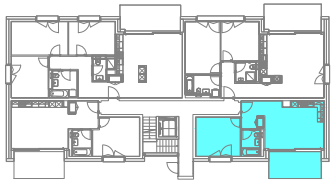
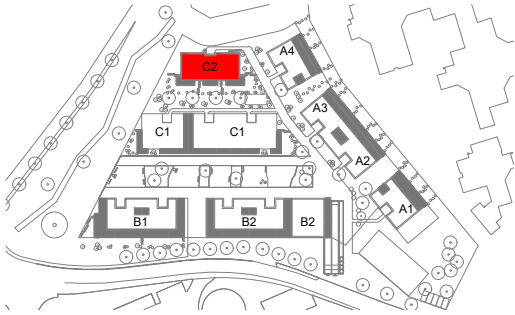
1er ETAGE

19.01.2024
 PEZZOLI & ASSOCIÉS | ARCHITECTES



PLAN 1:100





La Clochette
Mont-s/Lausanne
PPE "BATIMENT C2"
LOT n°8
APP n°8

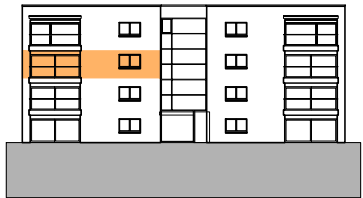
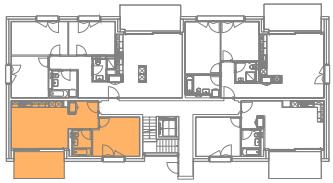
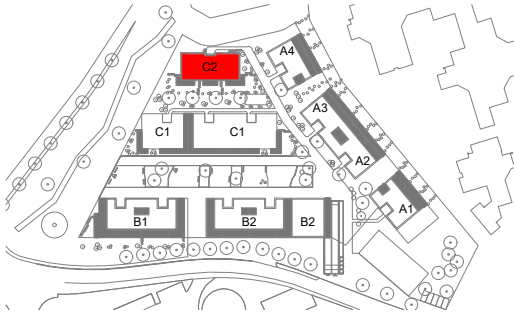
2.5 PIECES

[surface habit.uspi] 46.0 m²
 [surface balcon] 11.5 m²

CAVE 5.0 m²

1er ETAGE





La Clochette
Mont-s/Lausanne
PPE "BATIMENT C2"
LOT n°9
APP n°9

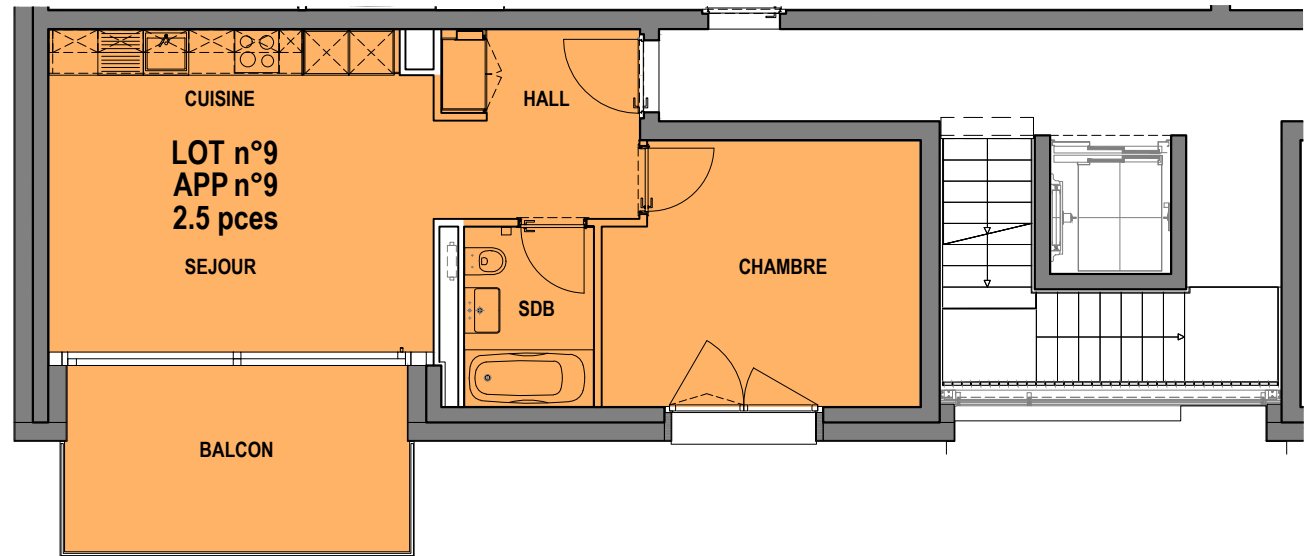
2.5 PIECES

[surface habit.uspi] 46.5 m²
 [surface balcon] 11.0 m²

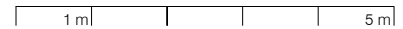
CAVE 6.0 m²

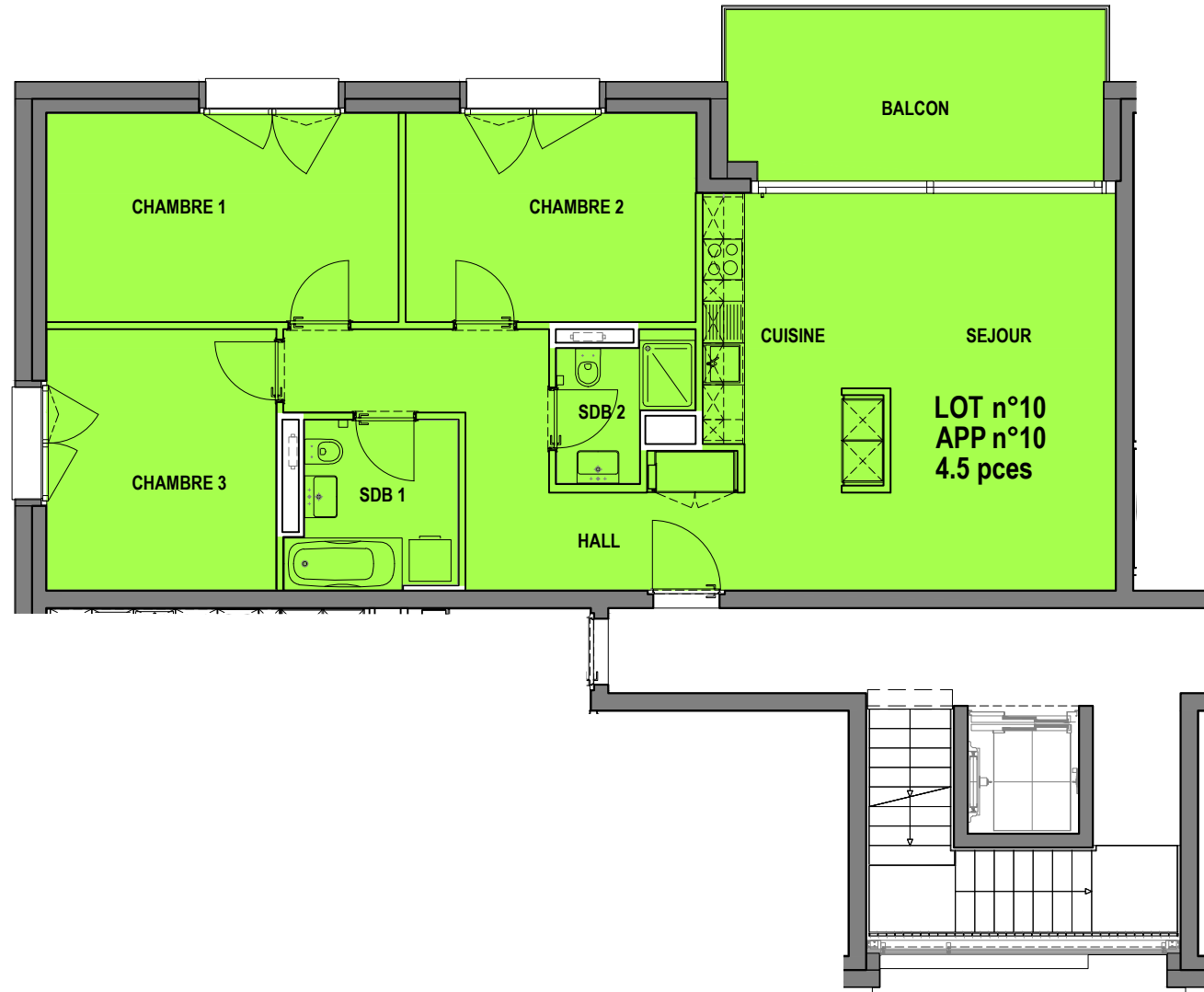
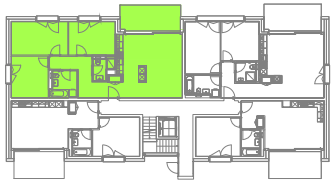
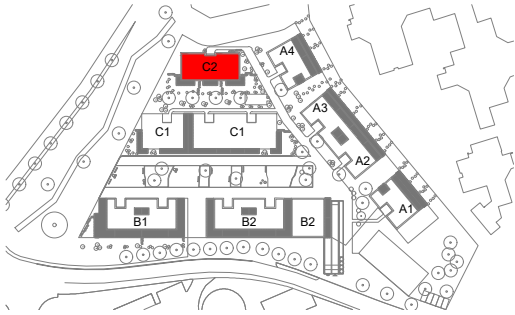
2e ETAGE

20.12.2023
 PEZZOLI & ASSOCIÉS | ARCHITECTES



PLAN 1:100





La Clochette
Mont-s/Lausanne
PPE "BATIMENT C2"
LOT n°10
APP n°10

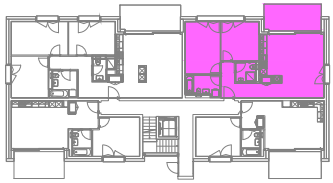
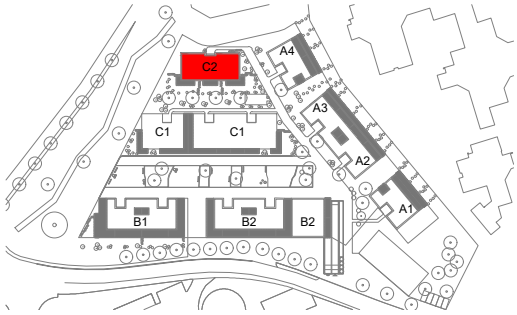
4.5 PIECES

[surface habit.uspi] 96.5 m²
 [surface balcon] 13.0 m²

CAVE 6.0 m²

2e ETAGE





La Clochette
Mont-s/Lausanne
PPE "BATIMENT C2"
LOT n°11
APP n°11

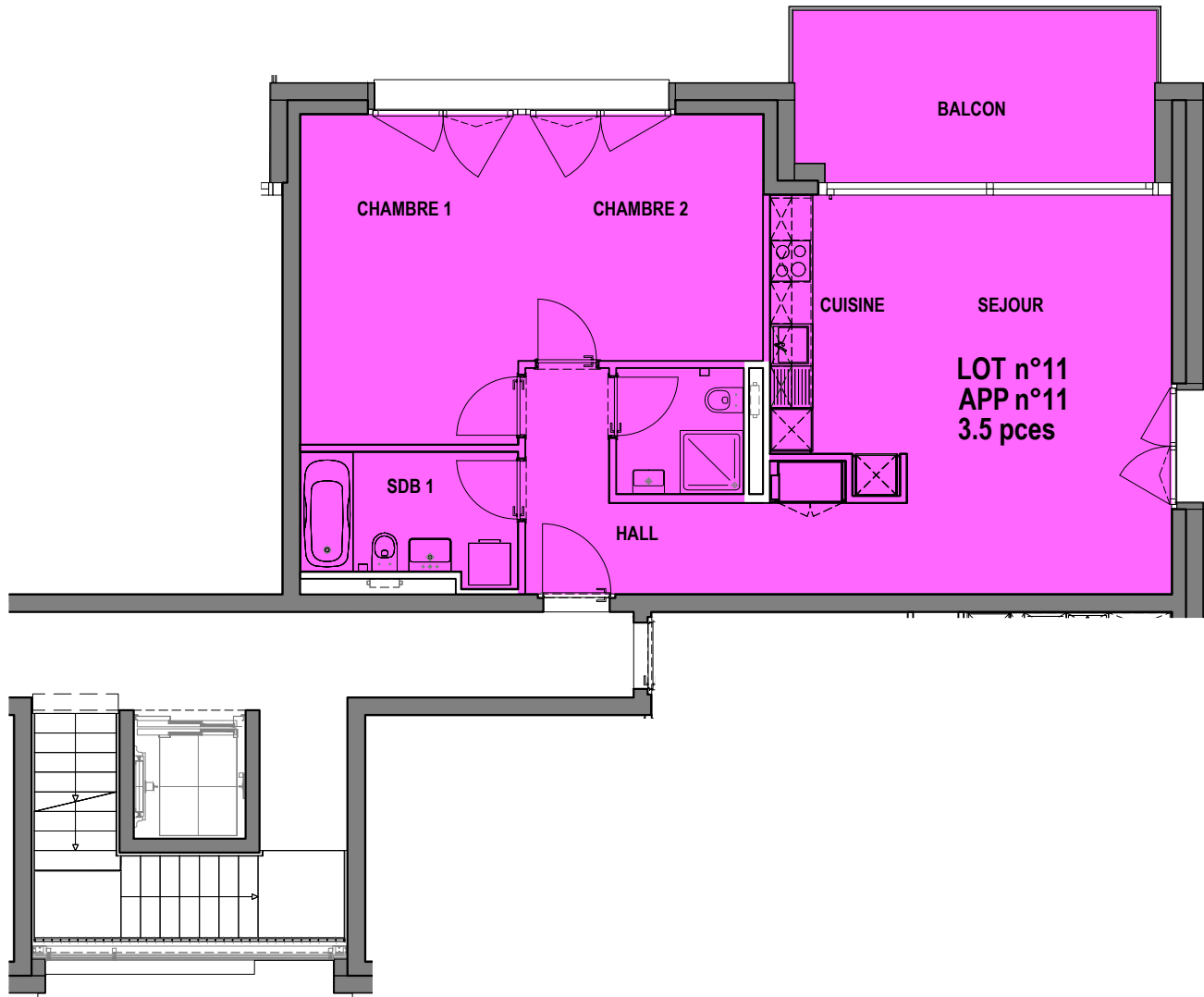
3.5 PIECES

[surface habit.uspi] 77.0 m²
 [surface balcon] 12.0 m²

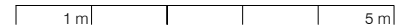
CAVE 6.0 m²

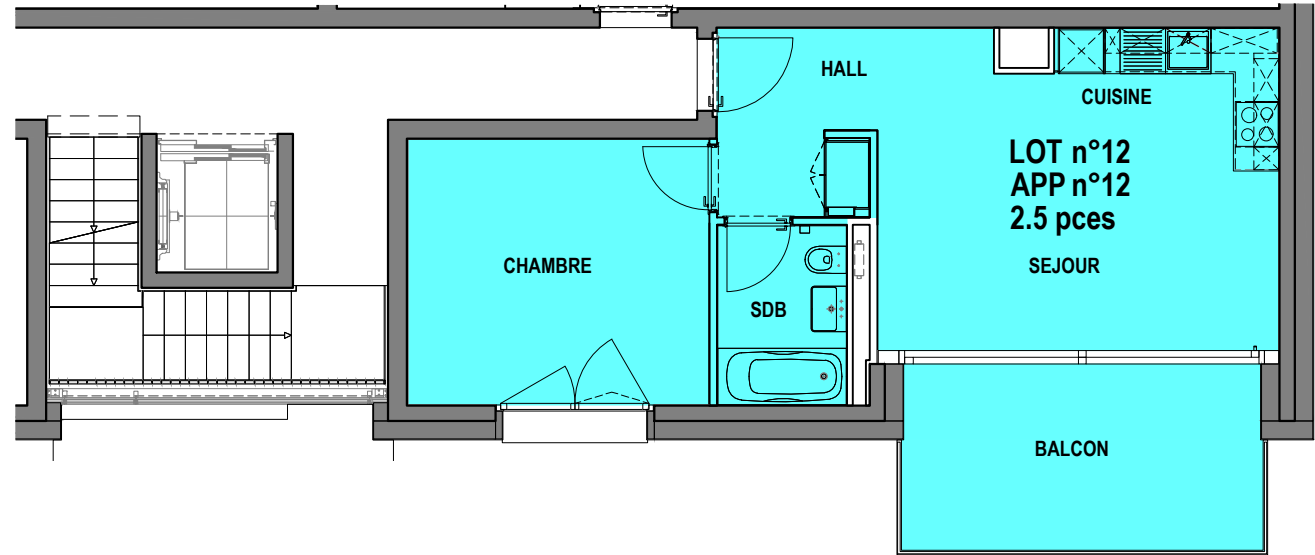
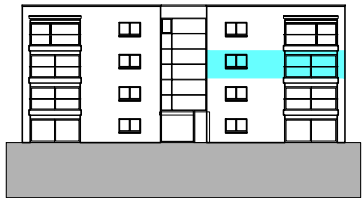
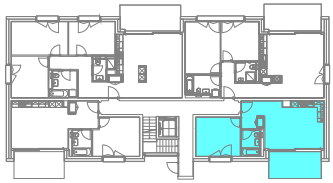
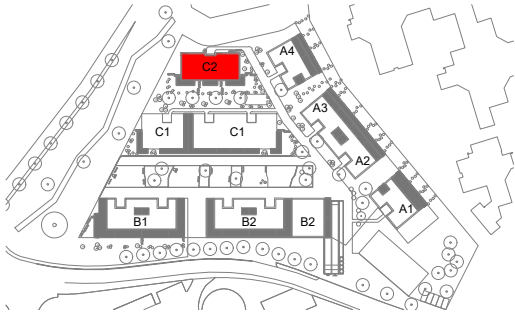
2e ETAGE

19.01.2024
 PEZZOLI & ASSOCIÉS | ARCHITECTES



PLAN 1:100





La Clochette
Mont-s/Lausanne
PPE "BATIMENT C2"
LOT n°12
APP n°12

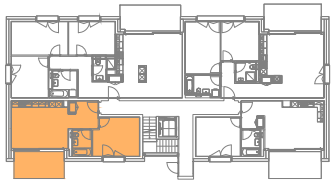
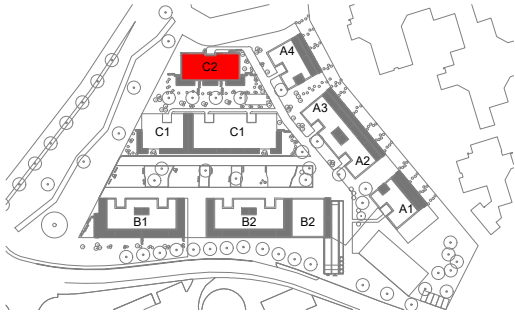
2.5 PIECES

[surface habit.uspi] 46.0 m²
 [surface balcon] 11.5 m²

CAVE 6.0 m²

2e ETAGE





La Clochette
Mont-s/Lausanne
PPE "BATIMENT C2"
LOT n°13
APP n°13

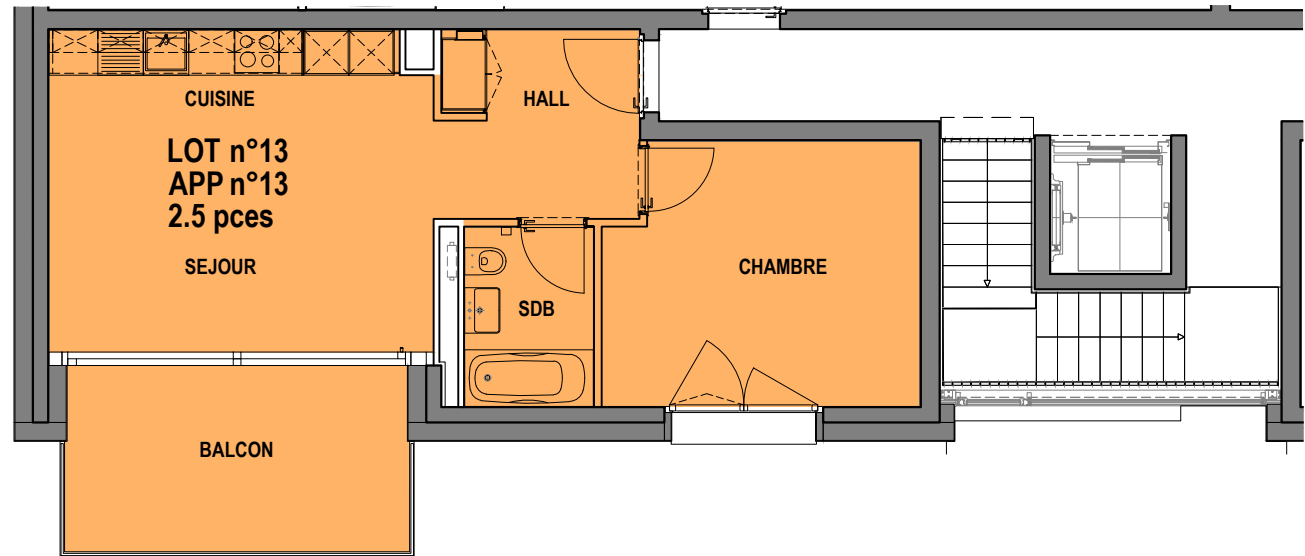
2.5 PIECES

[surface habit.uspi] 46.5 m²
 [surface balcon] 11.0 m²

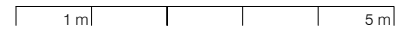
CAVE 6.0 m²

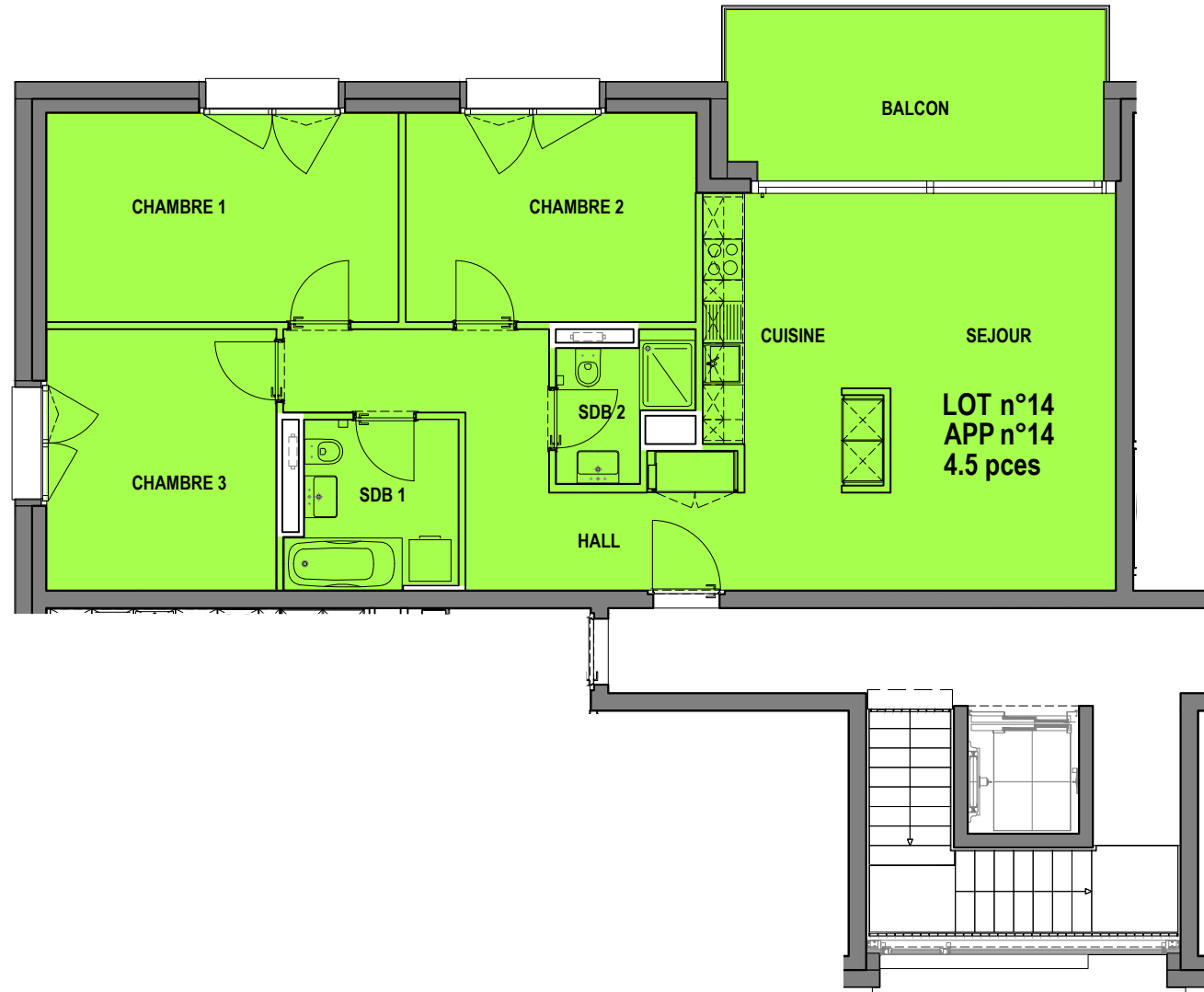
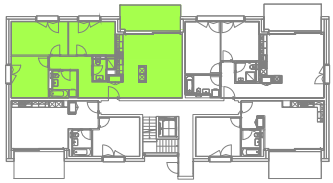
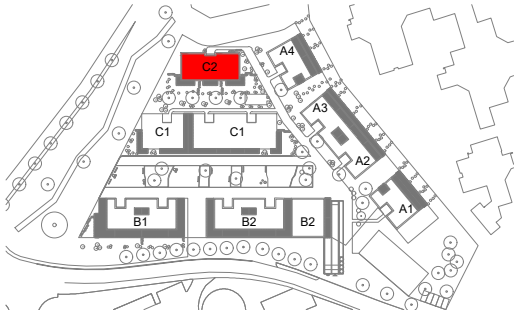
3e ETAGE

20.12.2023
 PEZZOLI & ASSOCIÉS | ARCHITECTES



PLAN 1:100





La Clochette
Mont-s/Lausanne
PPE "BATIMENT C2"
LOT n°14
APP n°14

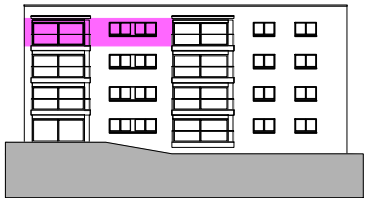
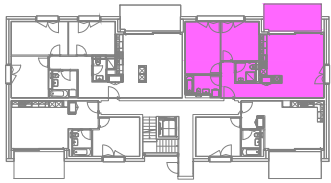
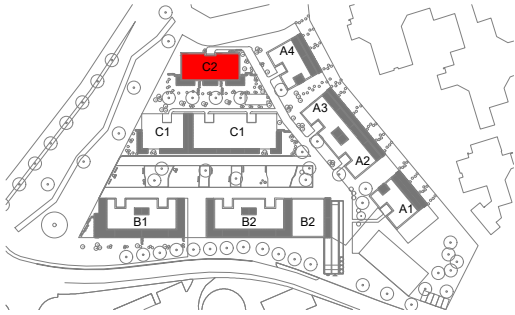
4.5 PIECES

[surface habit.uspi] 96.5 m²
 [surface balcon] 13.0 m²

CAVE 6.0 m²

3e ETAGE





La Clochette
Mont-s/Lausanne
PPE "BATIMENT C2"
LOT n°15
APP n°15

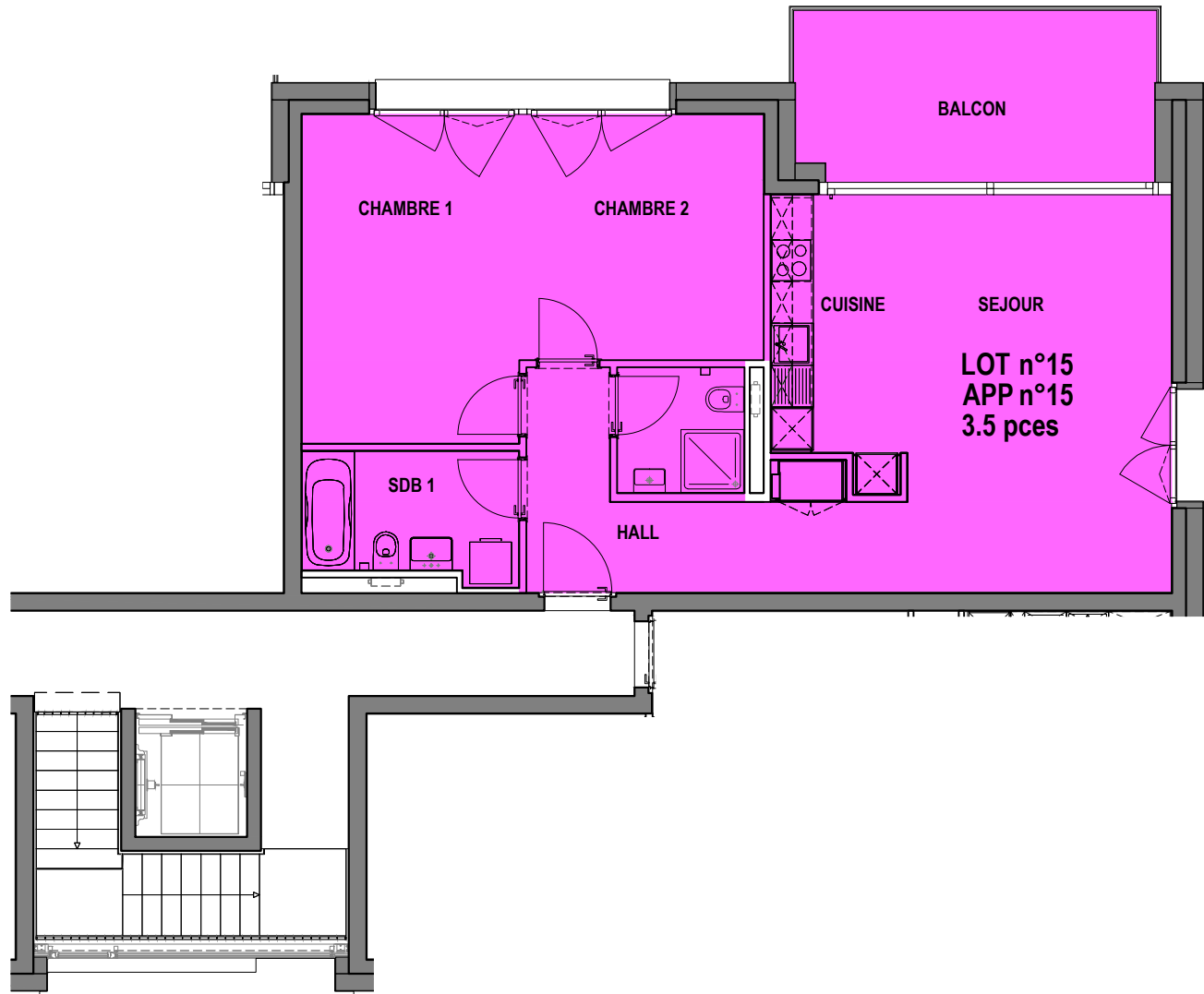
3.5 PIECES

[surface habit.uspi] 77.0 m²
 [surface balcon] 12.0 m²

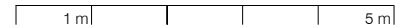
CAVE 6.0 m²

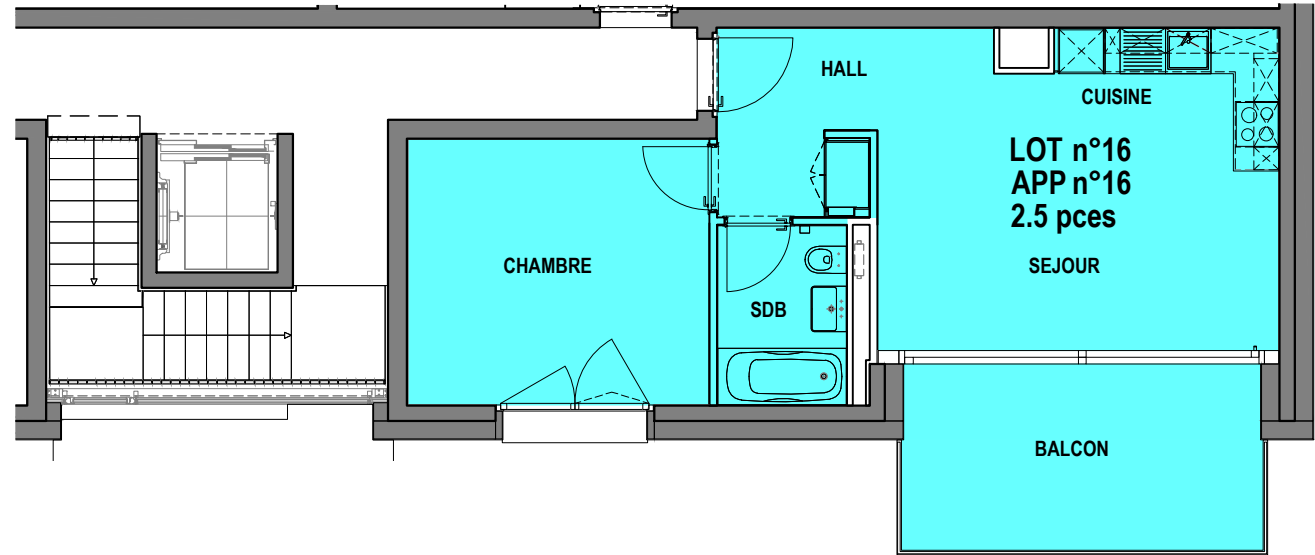
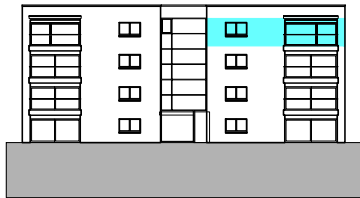
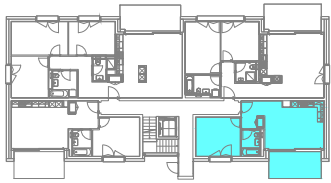
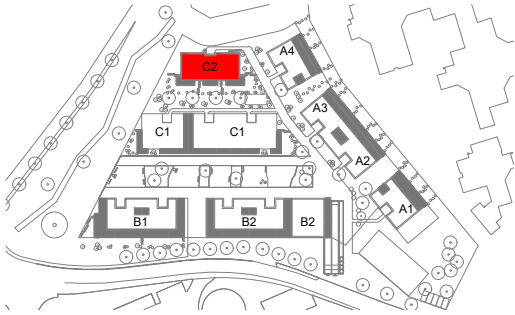
2e ETAGE

19.01.2024
 PEZZOLI & ASSOCIÉS | ARCHITECTES



PLAN 1:100





La Clochette
Mont-s/Lausanne
PPE "BATIMENT C2"
LOT n°16
APP n°16

2.5 PIECES

[surface habit.uspi] 46.0 m²
 [surface balcon] 11.5 m²

CAVE 5.5 m²

3e ETAGE

